

THIS ISSUE

News: Page 2
Research Opps: Page 5

IMPT DATES

Maymester Classes End
May 30

SSI Classes End
June 17

SSII Classes Start
June 24

SSII Classes End
July 25

Department Graduate
Student Orientation
August 19
10 am in Howell 205

FOLLOW US!



Psychology & Neuroscience Department Newsletter

Volume 8 | Issue 9

May 2019

Department News

Two Psychology and Neuroscience graduate students are the recipient of a National Science Foundation Graduate Research Fellowship, including Christopher Urban, a graduate student in Quantitative Psychology, and Samantha Hellberg, a graduate student in Clinical Psychology. The NSF Graduate Research Fellowship recognizes outstanding graduate students in STEM fields and NSF fellows receive three years of support as well as international research and professional development opportunities. Congratulations Christopher and Samantha!



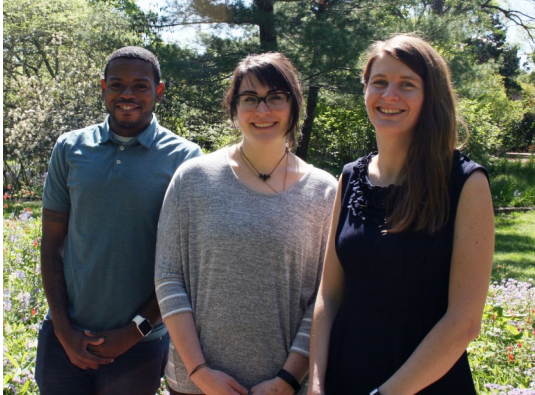
Margarett McBride, a graduate student in Developmental Psychology, is the recipient of a 2019-20 UNC Injury Prevention Research Center (IPRC) Injury and Violence Prevention (IVP) fellowship. The goal of this fellowship is to support masters and doctoral students from diverse backgrounds and to allow them a variety of mentoring and career development opportunities. IVP fellows work with IPRC-affiliated faculty mentors to identify opportunities to gain experience conducting IVP-related research, programming, or policy. This fellowship provides \$3,000 per year to support travel, conference, and meeting attendance, and other professional development opportunities.



Jacqueline Paniccia, a graduate student in Behavioral and Integrative Neuroscience, received a Ruth L. Kirschstein National Research Service Award (NRSA) from the National Institute on Drug Abuse. Under this fellowship, Jackie will investigate the neurobiological mechanisms by which heroin and heroin-conditioned cues negatively alter the peripheral immune response. Ultimately, this work will identify neural targets to dissociate the physiological effects of heroin from previously heroin-paired stimuli.



News, continued.



Three Psychology and Neuroscience graduate students are this year's recipient of a Baughman Dissertation Research Award, including Giulia Pancani in Cognitive Psychology, Jacqueline Paniccia in Behavioral & Integrative Neuroscience, and Henry Willis in Clinical Psychology. The Department of Psychology and Neuroscience offers Earl and Barbara Baughman Dissertation Research Award annually to 2-3 top researchers to support innovative research and to support award recipients in their completion of their dissertation projects. The Department awarded \$6,000 to each Baughman recipients, including Giulia Pancani (dissertation titled "The Impact of Cognitive and Perceptual Load on Parafoveal Processing During Reading"), Jackie Paniccia (dissertation titled "Hippocampal Neuroimmune Interactions Mediate Heroin-Conditioned Peripheral Immunomodulation"), and Henry Willis (dissertation titled "Developing a Culturally-Adapted Mobile Mental Health Intervention: a Multi-Study, Mixed Methods Approach").



Kathy Do, a graduate student in Developmental Psychology, is the recipient of a Center for Developmental Science (CDS) Carolina Consortium on Human Development (CCHD) Predoctoral Fellowship. The CCHD Predoctoral Program is a fully-funded two-year training program that is designed to facilitate continued diversity of candidates, mentors, institutions, and disciplines. Fellows receive cutting-edge training opportunities in Developmental Science that span the career trajectory. Congratulations, Kathy!



Kim Pentel, a graduate student in Clinical Psychology is the recipient of a 2018-19 Bernadette Gray-Little Award for Diversity Enhancement in Psychological Research. This award encourages and honors students who make a contribution to the advancement of knowledge concerning issues that face diverse populations or that are of concern to diverse populations. Kim received this award for her research focused on couples-based treatment outcome research. She specifically has worked on adapting couple-based therapies for same-sex couples and her work has been recognized at both the local and national level. Congratulations to Kim, and also to Heidi Vuletich, a Developmental and Social Psychology graduate student who received an Honorable Mention for the Gray-Little Award for her work investigating academic motivation in African American and Hispanic youth!



Kathy Do, a graduate student in Developmental Psychology, is the recipient of a 2018-19 Ernest C. Davenport Award for Outstanding Psychological Research by a Student Who Enhances Diversity. This award encourages and honors students from underrepresented groups who make a contribution to the advancement of knowledge of psychological science. Kathy received this award for her research on understanding positive and negative social influences on both prosocial and antisocial behaviors, and their neurodevelopmental processes across adolescence. Congratulations to Kathy, and also to Joseph Leshin, a Social Psychology graduate student who received an Honorable Mention for the Davenport Award for his work investigating individual differences in emotional processes, including emotion regulation strategies.

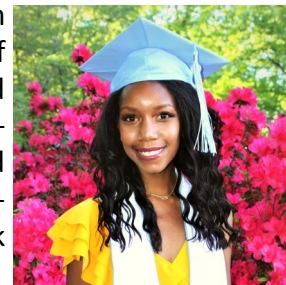




News, continued.



Two Psychology and Neuroscience graduating seniors were recognized at Commencement on Sunday, May 12 for their excellence in diversity research. Rawan Ajeen received the Susan M. McHale Award for several research projects involving psychiatry, nutrition, and design and interpretation of psychological research. For her Honors project, Rawan built a website to examine factors that influence hunger in Yemen analyzing the different coping mechanisms employed during times of food insecurity. Brianna Baker received the J. Steven Reznick Award for her impressive record of research across campus, including serving as an undergraduate research ambassador. For her Honors thesis, Brianna examined the influence of personal sources in conjunction with community factors of the development of post-traumatic stress following Hurricane Matthew in a predominantly Black community. Congratulations Rawan and Brianna!



Psi Chi recognized Dr. Patrick Harrison, Teaching Assistant Professor, and Grant Canipe, a graduate student in Developmental Psychology, with the 2019 Psi Chi Award for Outstanding Teaching. Dr. Harrison received this award for his teaching philosophy that brings energy, enthusiasm, and utility to subject matter that many students might otherwise find intimidating. Grant received this award as he is an outstanding and dedicated instructor and an exceptional researcher in the Cheatham Nutrition and Cognition Lab. Dr. Harrison and Grant were recognized at Commencement on Sunday, May 12.



The Psychology Club recognized Dr. Eva Telzer, Assistant Professor in Developmental Psychology, and Heidi Vuletich, a graduate student in Developmental and Social Psychology, with the 2019 Psych Club Award for Excellence in Research Mentoring. Dr. Telzer was honored for her dedication to honors students and her passion for helping her students genuinely succeed in the academic world. Dr. Telzer ensures that she is there to guide her students through their first research projects, but also gives undergraduates enough space to experiment, ensuring that the next generation of researchers are capable of anything. Heidi was honored as she is an exemplar model of a research mentor. Heidi has taken strides to reduce negative stereotypes associated with the rigidity and all too often impersonal nature of the lab environment. Heidi has shown incredible commitment to fostering research development in undergraduates. Dr. Telzer and Heidi were recognized at Commencement on Sunday, May 12.



Melissa Burroughs and Claudia Foubert, graduating seniors in Psychology and Neuroscience, are the recipients of the 2019 Dashiell-Thurstone Prize. This prize is awarded each year for the best honor thesis, as judged by a faculty committee. Melissa, working with her mentors Dr. Eva Telzer and Kathy Do, won for her outstanding senior honors thesis, "Using Neural Measures of Risk Taking to Predict Binge Drinking in Late Adolescence." Claudia, working with her mentor Dr. Kelly Giovanello, won for her outstanding senior honors thesis, "Free Recall Organization in Young People at Varying Risk for Schizophrenia." Melissa and Claudia were honored at Commencement on Sunday, May 12.





News, continued.

Three Psychology and Neuroscience staff members received the 2019 Staff Excellence Award, including Chelsea Ewing, former Clinical Psychology Program Coordinator and current Gil Internship Manager, Rhianon Thomas, Research Specialist in Dr. Todd Thiele's Laboratory, and Shiqing Zhu, Accounting Technician. The Staff Excellence Award is a departmental award that is given to exemplary staff members who go above and beyond the call of duty and whose work impacts the values of the Department. Staff who display excellent customer service, initiative, teamwork, innovation, or is just doing an outstanding job, are the recipients of this award. Chelsea, Rhiannon, and Shiqing were honored at the Psychology and Neuroscience Staff Appreciation Luncheon on May 17, 2019.



Effua Sosoo, and Henry Willis, graduate students in Clinical Psychology, are the 2019 recipients of a UNC Graduate School Initiative for Minority Excellence (IME) Doctoral Candidacy Award. IME focuses on the retention and successful graduation of our racially/ethnically diverse graduate students through creating a Community of Excellence, which provides programming opportunities and peer mentoring, focused groups in safe spaces for support, and resources that impact retention and time to degree. The IME Doctoral Candidacy Award is a non-service award in the amount of \$5,000 to support and invest the lives of IME scholars. Congratulations, Effua and Henry!



21 instructors in Psychology and Neuroscience garnered a Departmental Undergraduate Teaching Commendation for the Spring 2019 semester. Congratulations to Dr. Donald Baucom, Jennifer Buccholz, Zach Buchin, Dr. Steve Buzinski, Dr. Vicki Chanon, Noah Greifer, Dr. Desiree Griffin, Dr. Patrick Harrison, Douglas Hermes, Dr. Beth Kurtz-Costes, Van Licalde, Kelsey Ludwig, Dr. Keely Muscatell, Jacqueline Paniccia, Dr. Rachel Penton, Dr. Mitch Prinstein, Dr. Viji Sathy, Holly Shablack, Dr. William Snider, Danielle Weber, and Dr. Charlie Wiss!! Departmental Undergraduate Teaching Commendations are awarded to faculty and graduate student instructors whose undergraduate course ratings are within the top 15% of all undergraduate instructors each semester (with a minimum of 5 student respondents). Congratulations to all of our Spring 2019 commendation recipients!



3 instructors in Psychology and Neuroscience garnered a Department Graduate Teaching Commendation for the Spring 2019 semester. Congratulations to Dr. Shauna Cooper, Dr. Patrick Curran, and Dr. Keely Muscatell!!! Departmental Graduate Teaching Commendations are awarded to faculty and graduate student instructors whose graduate course ratings are within the top 15% among all graduate instructors each semester (with a minimum of 5 student respondents). Congratulations to our Spring 2019 commendation recipients!





Research Opportunities for Faculty

If you are interested in applying for any of these opportunities, contact Phil Lee, Grants Management Officer, at palee@email.unc.edu.



National Institutes of Health

Reducing the Duration of Untreated Psychosis in the United States

National Institute of Mental Health
[PAR-19-235](#) (R34 Clinical Trial Required)
[PAR-19-236](#) (R01 Clinical Trial Required)
Application Due Date: [Standard due dates apply](#)

Progression Markers for Cognitive Impairment in Parkinson's Disease Dementia (R01 Clinical Trial Not Allowed)

National Institute on Aging
 National Institute of Neurological Disorders and Stroke
[PAS-19-210](#)
Application Due Date: [Standard due dates apply](#)

Accelerating the Pace of Child Health Research Using Existing Data from the Adolescent Brain Cognitive Development (ABCD) Study

National Institute on Drug Abuse
 National Institute on Minority Health and Health Disparities
 National Institute of Mental Health
 National Cancer Institute
 National Center for Complementary and Integrative Health
[PAR-19-162](#) (R01 Clinical Trial Not Allowed)
[PAR-19-163](#) (R21 Clinical Trial Not Allowed)
Application Due Date: [Standard due dates apply](#)

End-of-Life and Palliative Needs of Adolescents and Young Adults (AYA) with Serious Illnesses
 National Institute of Nursing Research

National Cancer Institute
[PAR-19-136](#) (R01 Clinical Trial Optional)
[PAR-19-153](#) (R21 Clinical Trial Optional)
Application Due Date: [Standard due dates apply](#)

Emotion Regulation, Aging and Mental Disorder

National Institute of Mental Health
[PA-19-094](#) (R01 Clinical Trial Not Allowed)
[PA-19-095](#) (R21 Clinical Trial Not Allowed)
Application Due Date: [Standard due dates apply](#)

Biobehavioral Basis of Chronic Pain

National Institute of Nursing Research
 National Cancer Institute
 National Institute of Arthritis and Musculoskeletal and Skin Diseases
 National Center for Complementary and Integrative Health
 Office of Behavioral and Social Sciences Research
[PA-18-943](#) (R21 Clinical Trial Optional)
[PA-18-944](#) (R01 Clinical Trial Optional)
Application Due Date: [Standard due dates apply](#)

Applying a Biopsychosocial Perspective to Self-Management of Chronic Pain

National Institute of Nursing Research
 National Cancer Institute
 National Center for Complementary and Integrative Health
 Office of Behavioral and Social Sciences Research
[PA-18-945](#) (R01 Clinical Trial Optional)
[PA-18-946](#) (R21 Clinical Trial Optional)
Application Due Date: [Standard due dates apply](#)

BRAIN Initiative: Development Optimization, and Validation of Novel Tools and Technologies for Neuroscience Research (SBIR)

National Institute of Mental Health
 National Eye Institute
 National Institute on Alcohol Abuse and Alcoholism
 National Institute of Biomedical Imaging

and Bioengineering

Eunice Kennedy Shriver National Institute of Child Health and Human Development
 National Institute on Deafness and Other Communication Disorders
 National Institute on Drug Abuse
 National Institute of Neurological Disorders and Stroke
 National Center for Complementary and Integrative Health
[PA-18-870](#) (R41/R42 - Clinical Trials Not Allowed)
[PA-18-871](#) (R43/R44 - Clinical Trial Not Allowed)

Application Due Date: [Standard due dates apply](#)

Lab to Marketplace: Tools for Brain and Behavioral Research (R43/R44 - Clinical Trial Optional)

National Institute of Mental Health
[PA-18-819](#)
Application Due Date: [Standard due dates apply](#)

Analyses of Adherence Strategies and Data Sets from CALERIE to Explore Behavioral and Psychosocial Aspects of Sustained Caloric Restriction in Humans

National Institute on Aging
[PA-18-825](#) (R01 Clinical Trial Not Allowed)
[PA-18-826](#) (R21 Clinical Trial Not Allowed)
Application Due Date: [Standard due dates apply](#)

Alcohol and Other Drug Interactions: Unintentional Injuries and Overdoses: Epidemiology and Prevention

National Institute on Alcohol Abuse and Alcoholism
 National Institute on Drug Abuse
[PA-18-861](#) (R03 - Clinical Trial Optional)
[PA-18-862](#) (R21 - Clinical Trial Optional)
[PA-18-863](#) (R01 - Clinical Trial Optional)
Application Due Date: [Standard due dates apply](#)

Development and Optimization of Tasks and Measures for Functional Domains of Behavior (R01 Clinical Trial Not Allowed)



Research Opportunities, cont.

National Institute of Mental Health
National Institute on Alcohol Abuse and Alcoholism
National Institute on Drug Abuse
[PAR-18-930](#)
Application Due Date: [Standard due dates apply](#)

Innovative Technologies for HIV Behavioral and Social Science Research
National Institute of Mental Health
[PA-18-927](#) (R41/R42 Clinical Trial Optional)
[PA-18-929](#) (R43/R44 Clinical Trial Optional)
Application Due Date: [Standard due dates apply](#)

Development and Testing of Novel Interventions to Improve HIV Prevention, Care, and Program Implementation (R34-Clinical Trial Optional)
National Institute on Drug Abuse
[PA-18-780](#)
Application Due Date: [Standard due dates apply](#)

Pilot Health Services and Economic Research on the Treatment of Drug, Alcohol, and Tobacco Use Disorders (R34 Clinical Trial Optional)
National Institute on Drug Abuse
National Institute on Alcohol Abuse and Alcoholism
[PA-18-774](#)
Application Due Date: [Standard due dates apply](#)

Pilot and Feasibility Studies in Preparation for Drug and Alcohol Abuse Prevention Trials (R34 Clinical Trial Optional)
National Institute on Drug Abuse
National Institute on Alcohol Abuse and Alcoholism
[PA-18-775](#)
Application Due Date: [Standard due dates apply](#)

International Research Collaboration on Drug Abuse and Addiction Research (R01

Clinical Trial Optional)
National Institute on Drug Abuse
[PA-18-773](#)
Application Due Date: [Standard due dates apply](#)

Identification and Management of Behavioral Symptoms and Mental Health Conditions in Individuals with Intellectual Disabilities (R01 - Clinical Trial Optional)
National Institute of Child Health and Human Development
[PAR-18-766](#)
Application Due Date: [Standard due dates apply](#)

Improving Patient Adherence to Treatment and Prevention Regimens to Promote Health
Office of Behavioral and Social Sciences Research
National Cancer Institute
National Institute on Aging
National Institute on Alcohol Abuse and Alcoholism
National Institute of Allergy and Infectious Diseases
National Institute on Drug Abuse
National Institute of Mental Health
National Institute of Nursing Research
National Institute on Minority Health and Health Disparities
National Center for Complementary and Integrative Health
[PA-18-722](#) (R01 Clinical Trial Optional)
[PA-18-723](#) (R21 Clinical Trial Optional)
Application Due Date: [Standard due dates apply](#)

Women & Sex/Gender Differences in Drug and Alcohol Abuse/Dependence
National Institute on Drug Abuse
National Institute on Alcohol Abuse and Alcoholism
[PA-18-601](#) (R03 Clinical Trial Optional)
[PA-18-602](#) (R21 Clinical Trial Optional)
[PA-18-603](#) (R01 Clinical Trial Optional)
Application Due Date: [Standard due dates apply](#)

Developmentally Tailored HIV Prevention and Care Research for Adolescents and Young Adults
National Institute of Mental Health
National Institute on Drug Abuse
National Institute on Minority Health and Health Disparities
National Institute of Allergy and Infectious Diseases
[PA-18-651](#) (R01 Clinical Trial Optional)
[PA-18-652](#) (R21 Clinical Trial Optional)
[PA-18-653](#) (R34 Clinical Trial Optional)
Application Due Date: [Standard due dates apply](#)

Understanding Processes of Recovery in the Treatment of Alcohol Use Disorder
National Institute on Alcohol Abuse and Alcoholism
[PA-18-619](#) (R01 Clinical Trial Optional)
[PA-18-620](#) (R21 Clinical Trial Optional)
Application Due Date: [Standard due dates apply](#)

Mechanistic investigations of psychosocial stress effects on opioid use patterns
National Institute on Drug Abuse
Office of Behavioral and Social Sciences Research
[PAS-18-624](#) (R01 Clinical Trial Optional)
[PAS-18-625](#) (R21 Clinical Trial Optional)
Application Due Date: [Standard due dates apply](#)

Biobehavioral and Technological Interventions to Attenuate Cognitive Decline in Individuals with Cognitive Impairment or Dementia
National Institute of Nursing Research
National Institute on Aging
[PA 18-347](#) (R21 Clinical Trial Optional)
[PA-18-348](#) (R01 Clinical Trial Optional)
[PA-18-473](#) (R15 Clinical Trial Not Allowed)
Application Due Date: [Standard due dates apply](#)

Synthetic Psychoactive Drugs and Strategic Approaches to Counteract Their Deleterious Effects
National Institute on Drug Abuse



Research Opportunities, cont.

[PAR-18-509](#) (R21 Clinical Trial Optional)
[PAR-18-510](#) (R01 Clinical Trial Optional)
[PAR-18-527](#) (R03 Clinical Trial Optional)
Application Due Date: [Standard due dates apply](#)

Understanding and Modifying Temporal Dynamics of Coordinated Neural Activity
 National Institute of Mental Health
[PAR-18-554](#) (R21 Clinical Trial Optional)
[PAR-18-555](#) (R01 Clinical Trial Optional)
Application Due Date: [Standard due dates apply](#)

Research on Comparative Effectiveness and Implementation of HIV/AIDS and Alcohol Interventions (R01 Clinical Trial Optional)
 National Institute on Alcohol Abuse and Alcoholism
[PAS-18-557](#)
Application Due Date: [Standard due dates apply](#)

International Research Collaboration on Drug Abuse and Addiction Research
 National Institute on Drug Abuse
[PA-18-773](#) (R01 Clinical Trial Optional)
Application Due Date: [Standard due dates apply](#)

Health Services and Economic Research on the Prevention and Treatment of Drug, Alcohol, and Tobacco Abuse
 National Institute on Drug Abuse
 National Institute on Alcohol Abuse and Alcoholism
[PA-18-774](#) (R34 Clinical Trial Optional)
Application Due Date: [Standard due dates apply](#)

Using Information Technology to Support Systematic Screening and Treatment of Depression in Oncology Practices
 National Cancer Institute
[PA-18-492](#) (R21 Clinical Trial Optional)
[PA-18-493](#) (R01 Clinical Trial Optional)
Application Due Date: [Standard due dates apply](#)

Feasibility Clinical Trials of Mind and Body Interventions for NCCIH High Priority Research Topics (R34 Clinical Trial Required)
 National Center for Complementary and Integrative Health
[PAR-18-417](#)
Application Due Date: [Standard due dates apply](#)

Healthy Habits: Timing for Developing Sustainable Healthy Behaviors in Children and Adolescents
 National Institute of Nursing Research
[PA-18-354](#) (R21 Clinical Trial Optional)
[PA-18-355](#) (R01 Clinical Trial Optional)
Application Due Date: [Standard due dates apply](#)

Strengthening the HIV Pre-Exposure Prophylaxis (PrEP) Care Continuum through Behavioral, Social, and Implementation Science
 National Institute of Mental Health
[PA-18-271](#) (R21 Clinical Trial Optional)
[PA-18-281](#) (R01 Clinical Trial Optional)
Application Due Date: [Standard due dates apply](#)

Methodology and Measurement in the Behavioral and Social Sciences
 Office of Behavioral and Social Sciences Research
 National Cancer Institute
 National Eye Institute
 National Institute on Aging
 National Institute on Alcohol Abuse and Alcoholism
 National Institute on Deafness and Other Communication Disorders
 National Center for Complementary and Integrative Health
[PAR-18-352](#) (R01 Clinical Trial Optional)
[PAR-18-378](#) (R21 Clinical Trial Optional)
Application Due Date: [Standard due dates apply](#)

Family-Centered Self-Management of Chronic Conditions (R21)
 National Institute of Nursing Research
[PA-18-380](#) (Clinical Trial Optional)

[PA-18-383](#) (Clinical Trial Optional)
Application Due Date: [Standard due dates apply](#)

Addressing Unmet Needs in Persons with Dementia to Decrease Behavioral Symptoms and Improve Quality of Life
 National Institute of Nursing Research
[PA-18-147](#) (R01 Clinical Trial Optional)
[PA-18-165](#) (R21 Clinical Trial Optional)
Application Due Date: [Standard due dates apply](#)

Marijuana, Prescription Opioid, or Prescription Benzodiazepine Drug Use Among Older Adults
 National Institute on Drug Abuse
 National Institute on Aging
[PA-18-061](#) (R01 Clinical Trial Optional)
[PA-18-079](#) (R21 Clinical Trial Optional)
[PA-18-080](#) (R03 Clinical Trial Optional)
Application Due Date: [Standard due dates apply](#)

Neuroscience Research on Drug Abuse
 National Institute on Drug Abuse
[PA-18-078](#) (R21 Clinical Trial Optional)
[PA-18-060](#) (R01 Clinical Trial Optional)
Application Due Date: [Standard due dates apply](#)

Typical and Atypical Patterns of Language & Literacy in Dual Language Learners
 National Institute on Deafness and Other Communication Disorders
 Eunice Kennedy Shriver National Institute of Child Health and Human Development
[PA-18-316](#) (R01 - Clinical Trial Optional)
[PA-18-328](#) (R21 - Clinical Trial Optional)
Application Due Date: [Standard due dates apply](#)

Fundamental Science Research on Mind and Body Approaches
 National Center for Complementary and Integrative Health
[PA-18-322](#) (R21 - Clinical Trial Optional)
[PA-18-323](#) (R01 - Clinical Trial Optional)
Application Due Date: [Standard due dates apply](#)



Research Opportunities, cont.

New Onset Depressive Symptoms in Acute Illness

National Institute of Nursing Research
National Institute of Mental Health
[PA-17-487](#) (R21 Clinical Trial Not Allowed)
[PA-17-488](#) (R01 Clinical Trial Not Allowed)
Application Due Date: [Standard due dates apply](#)

Research on the Health of Transgender and Gender Nonconforming Populations

National Institute of Child Health and Human Development
National Cancer Institute
National Human Genome Research Institute
National Institute on Aging
National Institute on Alcohol Abuse and Alcoholism
National Institute of Allergy and Infectious Diseases
National Institute on Deafness and Other Communication Disorders
National Institute of Dental and Craniofacial Research
National Institute of Environmental Health Sciences
National Institute of Mental Health
National Institute of Nursing Research
National Institute on Minority Health and Health Disparities
National Center for Complementary and Integrative Health
Office of AIDS Research
Office of Research on Women's Health
Division of Program Coordination, Planning and Strategic Initiatives: Sexual & Gender Minority Research Office
[PA-18-728](#) (R21 Clinical Trial Optional)
[PA-18-729](#) (R01 Clinical Trial Optional)
Application Due Date: [Standard due dates apply](#)

Understanding and Modifying Temporal Dynamics of Coordinated Neural Activity

National Institute of Mental Health
[PAR-18-554](#) (R21 Clinical Trial Optional)
[PAR-18-555](#) (R01 Clinical Trial Optional)
Application Due Date: [Standard due dates apply](#)

[apply](#)

Typical and Atypical Patterns of Language & Literacy in Dual Language Learners

National Institute on Deafness and Other Communication Disorders
Eunice Kennedy Shriver National Institute of Child Health and Human Development
[PA-18-316](#) (R01 – Clinical Trial Optional)
[PA-18-328](#) (R21 – Clinical Trial Optional)
Application Due Date: [Standard due dates apply](#)

First in Human and Early Stage Clinical Trials of Novel Investigational Drugs or Devices for Psychiatric Disorders (U01 Clinical Trial Required)

National Institute of Mental Health
[PAR-18-427](#)
Application Due Date: [Standard due dates apply](#)

Cellular and Molecular Biology of Complex Brain Disorders

National Institute of Mental Health
[PAR-17-309](#) (R01)
[PAR-17-310](#) (R21)
Application Due Date: [Standard due dates apply](#)

Understanding Processes of Recovery in the Treatment of Alcohol Use Disorder

National Institute on Alcohol Abuse and Alcoholism
[PA-18-620](#) (R21 Clinical Trial Optional)
[PA-18-619](#) (R01 Clinical Trial Optional)
Application Due Date: [Standard due dates apply](#)

Initiation of a Mental Health Family Navigator Model to Promote Early Access, Engagement and Coordination of Needed Mental Health Services for Children and Adolescents

National Institute of Mental Health
[PAR-18-428](#) (R01 Clinical Trial Required)
[PAR-18-429](#) (R34 Clinical Trial Required)
Application Due Date: [Standard due dates apply](#)

Pilot Studies to Test the Initiation of a Mental Health Family Navigator Model to Promote Early Access, Engagement and Coordination of Needed Mental Health Services for Children and Adolescents

National Institute of Mental Health
[PAR-18-428](#) (R01 Clinical Trial Required)
[PAR-18-429](#) (R34 Clinical Trial Required)
Application Due Date: [Standard due dates apply](#)

Effectiveness Trials for Post-Acute Interventions and Services to Optimize Longer-term Outcomes

National Institute of Mental Health
[PAR-18-430](#) (R01 Clinical Trial Required)
[PAR-18-431](#) (R34 Clinical Trial Required)
Application Due Date: [Standard due dates apply](#)

Innovative Mental Health Services Research Not Involving Clinical Trials (R01)

National Institute of Mental Health
[PAR-17-264](#)
Application Due Date: [Standard due dates apply](#)

NICHHD Exploratory/Developmental Research Grant (R21 Clinical Trial Optional)

National Institute of Child Health and Human Development
[PA-18-482](#)
Application Due Date: [Standard due dates apply](#)

Clinical Studies of Mental Illness Not Involving Clinical Trials (Collaborative R01)

National Institute of Mental Health
[PAR-17-256](#)
Application Due Date: [Standard due dates apply](#)

Marijuana, Prescription Opioid, or Prescription Benzodiazepine Drug Use Among Older Adults

National Institute on Drug Abuse
National Institute on Aging
[PAR-18-061](#) (R01 Clinical Trial Optional)
[PAR-18-079](#) (R21 Clinical Trial Optional)
[PAR-18-080](#) (R03 Clinical Trial Optional)



Research Opportunities, cont.

Application Due Date: [Standard due dates apply](#)

From Genomic Association to Causation: A Convergent Neuroscience Approach for Integrating Levels of Analysis to Delineate Brain Function in Neuropsychiatry
National Institute of Mental Health

[PAR-17-176](#) (Collaborative U01)

[PAR-17-179](#) (U01)

Application Due Date: [Standard due dates apply](#)

Formative and Pilot Intervention Research for Prevention and Treatment of HIV/AIDS (R34 Clinical Trial Optional)

National Institute of Mental Health

[PA-18-276](#)

Application Due Date: [Standard due dates apply](#)

Health Promotion Among Racial and Ethnic Minority Males

National Institute of Nursing Research

National Institute of Diabetes and Digestive and Kidney Diseases

[PA-18-144](#) (R01 Clinical Trial Optional)

[PA-18-162](#) (R21 Clinical Trial Optional)

Application Due Date: [Standard due dates apply](#)

Preclinical Research on Model Organisms to Predict Treatment Outcomes for Disorders Associated with Intellectual and Developmental Disabilities (R01)

National Institute of Child Health and Human Development

[PAR-16-215](#)

Application Due Date: [Standard due dates apply](#)

NINDS Faculty Development Award to Promote Diversity in Neuroscience Research (K01)

National Institute of Neurological Disorders and Stroke

[PAR-18-486](#) (K01 Clinical Trial Required)

[PAR-18-490](#) (K01 Independent Clinical Trial Not Allowed)

Application Due Date: [Standard due dates apply](#)

Diet and Physical Activity Assessment Methodology (R01 Clinical Trial Optional)

National Institute of Diabetes and Digestive and Kidney Diseases

National Cancer Institute

National Institute on Alcohol Abuse and Alcoholism

National Center for Complementary and Integrative Health

Office of Dietary Supplements

[PA-18-856](#)

Application Due Date: [Standard due dates apply](#)

Physical Activity and Weight Control Interventions Among Cancer Survivors: Effects on Biomarkers of Prognosis and Survival

National Cancer Institute

[PAR-18-893](#) (R01 Clinical Trial Optional)

[PAR-18-892](#) (R21 Clinical Trial Optional)

Application Due Date: [Standard due dates apply](#)

Biobehavioral and Technological Interventions to Attenuate Cognitive Decline in Individuals with Cognitive Impairment or Dementia

National Institute of Nursing Research

National Institute on Aging

[PA-18-347](#) (R21 Clinical Trial Optional)

[PA-18-473](#) (R15 Clinical Trial Optional)

[PA-18-348](#) (R01 Clinical Trial Optional)

Application Due Date: [Standard due dates apply](#)

Women & Sex/Gender Differences in Drug and Alcohol Abuse/Dependence

National Institute on Drug Abuse

National Institute on Alcohol Abuse and Alcoholism

[PA-18-601](#) (R03 Clinical Trial Optional)

[PA-18-602](#) (R21 Clinical Trial Optional)

[PA-18-603](#) (R01 Clinical Trial Optional)

Application Due Date: [Standard due dates apply](#)

Clinical Studies of Mental Illness Not Involving Treatment Development, Efficacy, or Effectiveness Trials National Institute of Mental Health

[PAR-17-256](#) (Collaborative R01)

Application Due Date: [Standard due dates apply](#)

Lab to Marketplace: Tools for Brain and Behavioral Research

National Institute of Mental Health

National Institute of Deafness and Other Communication Disorders

[PA-18-819](#) (R43/R44 Clinical Trial Optional)

Application Due Date: [Standard due dates apply](#)

BRAIN Initiative: Development, Optimization, and Validation of Novel Tools and Technologies for Neuroscience Research

National Institute of Mental Health

National Institute of Aging

National Institute on Alcohol Abuse and Alcoholism

National Institute on Drug Abuse

National Institute of Neurological Disorders and Stroke

National Institute on Deafness and Other Communication Disorders

[PA-18-870](#) (STTR) (R41/R42 Clinical Trial Not Allowed)

[PA-18-871](#) (SBIR) (R43/R44 Clinical Trial Not Allowed)

Application Due Date: [Standard due dates apply](#)

Research Career Enhancement Award to Advance Therapy Development for Alzheimer's (K18)

National Institute on Aging

[PAR-17-052](#)

Application Due Date: [Standard due dates apply](#)

Leveraging Existing Cohort Studies to Clarify Risk and Protective Factors for Alzheimer's Disease and Related Dementias (R01)

National Institute on Aging

[PAR-17-054](#)

Application Due Date: [Standard due dates apply](#)

Target Assessment, Engagement and Data



Research Opportunities, cont.

Replicability to Improve Substance Use Disorders Treatment Outcomes

National Institute on Drug Abuse
National Cancer Institute
National Institute on Alcohol Abuse and Alcoholism
[PAR-18-085](#) (R33 Clinical Trial Optional)
[PAR-18-086](#) (R21/R33 Clinical Trial Optional)

Application Due Date: [Standard due dates apply](#)

Research on Autism Spectrum Disorders

National Institute of Mental Health
National Institute of Child Health and Human Development
National Institute on Deafness and Other Communication Disorders
National Institute of Environmental Health Sciences
National Institute of Neurological Disorders and Stroke
[PA-18-399](#) (R03 Clinical Trial Optional)
[PA-18-400](#) (R21 Clinical Trial Optional)
[PA-18-401](#) (R01 Clinical Trial Optional)

Application Due Date: [Standard due dates apply](#)

Mentored Quantitative Research Development Award

National Heart, Lung, and Blood Institute
National Institute on Aging
National Institute on Alcohol Abuse and Alcoholism
National Institute of Allergy and Infectious Diseases
National Institute of Arthritis and Musculoskeletal and Skin Diseases
National Institute of Biomedical Imaging and Bioengineering
Eunice Kennedy Shriver National Institute of Child Health and Human Development
National Institute on Deafness and Other Communication Disorders
National Institute of Dental and Craniofacial Research
National Institute of Diabetes and Digestive and Kidney Diseases
National Institute on Drug Abuse
National Institute of Environmental Health Sciences

National Institute of General Medical Sciences
[PA-19-125](#) (Parent K25 - Independent Clinical Trial Required)
[PA-19-124](#) (Parent K25 - Independent Clinical Trial Not Allowed)
Application Due Date: [Standard due dates apply](#)

Development and/or Validation of Devices or Electronic Systems to Monitor or Enhance Mind and Body Interventions

National Center for Complementary and Integrative Health
[PAS-18-120](#) (R43/R44 Clinical Trial Optional)
[PAS-18-121](#) (R41/R42 Clinical Trial Optional)
Application Due Date: [Standard due dates apply](#)

Tools for Clinical Care and Management of Alzheimer's Disease (AD) and Its Comorbidities

National Institute on Aging
[PAR-17-066](#) (R41/R42)
[PAR-17-067](#) (R43/R44)
Application Due Date: [Standard due dates apply](#)

Advancing Research on Alzheimer's Disease (AD) and Alzheimer's-Disease-Related Dementias (ADRD)

National Institute on Aging
[PAS-18-187](#) (R43/R44 Clinical Trial Optional)
[PAS-18-188](#) (R41/R42 Clinical Trial Optional)
Application Due Date: [Standard due dates apply](#)

Chronic Condition Self-Management in Children and Adolescents

National Institute of Nursing Research
[PA-18-151](#) (R01 Clinical Trial Optional)
[PA-18-168](#) (R21 Clinical Trial Optional)
Application Due Date: [Standard due dates apply](#)

Basic Mechanisms of Brain Development Mediating Substance Use and Depend-

ence (R01)
National Institute on Drug Abuse
National Institute on Alcohol Abuse and Alcoholism
[PA-17-119](#)
Application Due Date: [Standard due dates apply](#)

Innovations in Mechanisms and Interventions to Address Mental Health in HIV Prevention and Care Continuum

National Institute of Mental Health
National Institute on Drug Abuse
[PA-18-274](#) (R01 Clinical Trial Optional)
[PA-18-275](#) (R21 Clinical Trial Optional)
Application Due Date: [Standard due dates apply](#)

Advancing our Understanding of the Brain Epitranscriptomics

National Institute of Mental Health
National Institute on Drug Abuse
[PAR-17-152](#) (R21)
[PAR-17-153](#) (R01)
Application Due Date: [Standard due dates apply](#)

Functional Genetics, Epigenetics, and Non-coding RNAs in Substance Use Disorders

National Institute on Drug Abuse
[PA-17-155](#) (R01)
[PA-17-157](#) (R21)
Application Due Date: [Standard due dates apply](#)

Innovations in HIV Testing, Adherence, and Retention to Optimize HIV Care Continuum Outcomes

National Institute of Mental Health
[PA-18-277](#) (R21 Clinical Trial Optional)
[PA-18-278](#) (R01 Clinical Trial Optional)
Application Due Date: [Standard AIDS due dates apply](#)

AIDS-Science Track Award for Research Transition (R03 Clinical Trial Optional)

National Institute on Drug Abuse
[PA-18-916](#)
Application Due Date: [Standard AIDS due dates apply](#)



Research Opportunities, cont.

HIV/AIDS High Priority Drug Abuse Research (R01 Clinical Trial Optional)
National Institute on Drug Abuse

[PAS-18-915](#)

Application Due Date: [Standard AIDS due dates apply](#)

Targeted basic behavioral and social science and intervention development for HIV prevention and care

National Institute of Mental Health

[PA-18-272](#) (R21 Clinical Trial Optional)

[PA-18-273](#) (R01 Clinical Trial Optional)

Application Due Date: [Standard AIDS due dates apply](#)

Targeted Implementation Science to Achieve 90/90/90 Goals for HIV/AIDS Prevention and Treatment

National Institute of Mental Health

[PA-18-279](#) (R01 Clinical Trial Optional)

[PA-18-280](#) (R21 Clinical Trial Optional)

Application Due Date: [Standard AIDS due dates apply](#)

Engaging Men in HIV Testing, Prevention, and Care (R21 Clinical Trial Optional)
National Institute of Allergy and Infectious Diseases

National Institute of Mental Health

[PA-19-050](#)

Application Due Date: [Standard AIDS due dates apply](#)

Supplements to Advance Research (STAR) from Projects to Programs (Admin Supp Clinical Trial Optional)

National Institute on Alcohol Abuse and Alcoholism

[PA-18-647](#)

Application Due Dates: **07/01/19, plus other deadlines through 2021**

Research on Current Topics in Alzheimer's Disease and Its Related Dementias

National Institute on Aging

National Institute of Neurological Disorders and Stroke

[PAR-19-070](#) (R01 Clinical Trial Optional)

[PAR-19-071](#) (R21 Clinical Trial Not Allowed)

lowed)

Application Due Dates: 07/09/19, plus additional deadlines through 2021

Discovery and Validation of Novel Targets for Safe and Effective Pain Treatment

National Institute of Neurological Disorders and Stroke

National Cancer Institute

National Eye Institute

National Institute on Aging

National Institute on Alcohol Abuse and Alcoholism

National Institute of Arthritis and Musculoskeletal and Skin Diseases

National Institute of Child Health and Human Development

National Institute of Dental and Craniofacial Research

National Institute of Diabetes and Digestive and Kidney Diseases

National Institute on Drug Abuse

National Institute of Nursing Research

National Library of Medicine

National Center for Complementary and Integrative Health

[RFA-NS-18-042](#) (R21 Clinical Trial Not Allowed)

[RFA-NS-18-043](#) (R01 Clinical Trial Not Allowed)

Application Due Date: 07/11/19 and 11/12/19

BRAIN Initiative: Targeted BRAIN Circuits Projects- TargetedBCP

National Institute of Neurological Disorders and Stroke

Office of Behavioral and Social Sciences Research

Office of Research on Women's Health

National Eye Institute

National Institute on Aging

National Institute on Alcohol Abuse and Alcoholism

National Institute of Biomedical Imaging and Bioengineering

Eunice Kennedy Shriver National Institute of Child Health and Human Development

National Institute on Deafness and Other Communication Disorders

National Institute on Drug Abuse

National Institute of Mental Health

National Center for Complementary and Integrative Health

[RFA-NS-18-014](#) (R34 Clinical Trial Not Allowed)

[RFA-NS-18-030](#) (R01 Clinical Trial Not Allowed)

Application Due Dates: 07/15/19

Mentored Research Scientist Career Development Award in Tobacco Regulatory Research

National Cancer Institute

National Heart, Lung, and Blood Institute

National Institute on Drug Abuse

National Institute of Environmental Health Sciences

[RFA-OD-18-005](#) (K01 - Independent Clinical Trial Not Allowed)

[RFA-OD-18-006](#) (K01 - Independent Clinical Trial Required)

Application Due Dates: 07/19/19 and 11/08/19

Pathway to Independence Award in Tobacco Regulatory Research

National Cancer Institute

National Heart, Lung, and Blood Institute

National Institute on Drug Abuse

National Institute of Environmental Health Sciences

[RFA-OD-18-007](#) (K99/R00 - Independent Clinical Trial Not Allowed)

[RFA-OD-18-008](#) (K99/R00 - Independent Clinical Trial Required)

Application Due Dates: 07/19/19 and 11/08/19

Behavioral & Integrative Treatment Development Program

National Institute on Drug Abuse

National Institute on Alcohol Abuse and Alcoholism

[PAR-19-212](#) (R01 Clinical Trial Optional)

[PAR-19-213](#) (R34 Clinical Trial Optional)

Application Due Dates: 07/23/19, plus additional deadlines through 2022

Limited Competition for Adolescent Brain



Research Opportunities, cont.

Cognitive Development (ABCD) Study

National Institute on Drug Abuse
National Institute on Alcohol Abuse and Alcoholism
National Cancer Institute
National Institute of Child Health and Human Development
National Institute of Mental Health
National Institute of Neurological Disorders and Stroke
National Institute on Minority Health and Health Disparities

[RFA-DA-20-002](#) (Linked Research Project Sites - Collaborative U01 Clinical Trial Not Allowed)

[RFA-DA-20-003](#) (Data Analysis, Informatics and Resource Center - U24 Clinical Trial Not Allowed)

[RFA-DA-20-004](#) (Coordinating Center - U24 Clinical Trial Not Allowed)

Application Due Date: 07/24/19

Mental Health Research Dissertation Grant to Enhance Workforce Diversity (R36)

National Institute of Mental Health
[PAR-18-894](#)

Application Due Dates: 08/06/19, plus additional deadlines through 2021

Cutting-Edge Basic Research Awards (CEBRA) (R21-Clinical Trial Optional)

National Institute on Drug Abuse
[PAR-18-437](#)

Application Due Dates: 08/20/19, plus additional dates through 2020

Genetic analysis of non-human animal models to understand the genomic architecture of substance use disorders and addictive behaviors (U01 Clinical Trial Not Allowed)

National Institute on Drug Abuse
[PAR-18-789](#)

Application Due Dates: 08/21/19, plus additional dates through 2021

Advancing Exceptional Research on HIV/AIDS and Substance Abuse (R01 Clinical Trial Optional)

National Institute on Drug Abuse

[RFA-DA-18-022](#)

Application Due Dates: 08/22/19, plus additional dates through 2020

BRAIN Initiative: Theories, Models and Methods for Analysis of Complex Data from the Brain (R01 - Clinical Trial Not Allowed)

National Institute of Biomedical Imaging and Bioengineering
National Center for Complementary and Integrative Health
National Eye Institute
National Institute on Aging
National Institute on Alcohol Abuse and Alcoholism

National Institute of Child Health and Human Development

National Institute on Drug Abuse
National Institute on Deafness and Other Communication Disorders

National Institute of Mental Health
National Institute of Neurological Disorders and Stroke

[RFA-FB-17-005](#)

Application Due Date: 09/03/19

BRAIN Initiative: Secondary Analysis and Archiving of BRAIN Initiative Data (R01 Clinical Trial Not Allowed)

National Institute of Mental Health
National Eye Institute

National Institute on Aging
National Institute on Alcohol Abuse and Alcoholism

National Institute of Biomedical Imaging and Bioengineering

National Institute of Child Health and Human Development

National Institute on Deafness and Other Communication Disorders

National Institute on Drug Abuse
National Institute of Neurological Disorders and Stroke

National Center for Complementary and Integrative Health

[RFA-MH-20-120](#)

Application Due Dates: 09/06/19 and 06/11/20

BRAIN Initiative: Development and Validation of Novel Tools to Probe Cell-Specific and Circuit-Specific Processes in the Brain (R01 Clinical Trial Not Allowed)

Office of Research on Women's Health
National Eye Institute

National Institute on Aging
National Institute on Alcohol Abuse and Alcoholism

National Institute of Biomedical Imaging and Bioengineering

National Institute of Child Health and Human Development

National Institute on Deafness and Other Communication Disorders

National Institute on Drug Abuse

National Institute of Neurological Disorders and Stroke

National Center for Complementary and Integrative Health

[RFA-MH-19-136](#)

Application Due Dates: 09/06/19 and 09/09/20

Providing Research Education Experiences to Enhance Diversity in the Next Generation of Substance Abuse and Addiction Scientists (R25 - Clinical Trials Not Allowed)

National Institute on Drug Abuse
[PAR-19-246](#)

Application Due Dates: 09/13/19 and 09/15/20

Administrative Supplements for the U.S.-Japan Brain Research Cooperative Program (BRCP) - U.S. Entity (Admin Supp)

National Institute of Neurological Disorders and Stroke

National Institute on Aging

National Institute of Biomedical Imaging and Bioengineering

National Institute on Deafness and Other Communication Disorders

National Institute of Dental and Craniofacial Research

National Institute on Drug Abuse

National Institute of Environmental Health Sciences



Research Opportunities, cont.

National Institute of Mental Health
National Center for Complementary and Integrative Health
National Center for Advancing Translational Sciences

[PA-17-326](#)

Application Due Dates: 09/18/19

NINDS Neuroscience Development for Advancing the Careers of a Diverse Research Workforce (R25)

National Institute of Neurological Disorders and Stroke

[PAR-17-312](#)

Application Due Dates: 09/25/19

Perception and Cognition Research to Inform Cancer Image Interpretation

National Cancer Institute

National Institute of Biomedical Imaging and Bioengineering

[PAR-18-640](#) (R01 Clinical Trial Optional)

[PAR-18-641](#) (R21 Clinical Trial Optional)

Application Due Date: 09/26/19

BRAIN Initiative: Tools to Facilitate High-Throughput Microconnectivity Analysis (R01 Clinical Trial Not Allowed)

National Institute of Mental Health

National Eye Institute

National Institute on Aging

National Institute on Alcohol Abuse and Alcoholism

National Institute of Biomedical Imaging and Bioengineering

National Institute of Child Health and Human Development

National Institute on Deafness and Other Communication Disorders

National Institute on Drug Abuse

National Institute of Neurological Disorders and Stroke

National Center for Complementary and Integrative Health

[RFA-MH-20-135](#)

Application Due Dates: 09/27/19 and 09/30/20

Standard NIH due dates for all activity codes including new submissions, renewals, and resubmissions can be found [here](#).

UNC

NC TraCS \$2k Award

[TraCS \\$2k Guidelines](#)

Application Due Dates: 06/18/19, plus monthly deadlines throughout 2019

TraCS Health Research Stakeholder Engagement \$2k Pilot Vouchers

[TraCS Guidelines Here](#)

Application Due Dates: 06/18/19, plus additional deadlines through 2018

NC TraCS \$5k-\$50k Grants (50% matching required)

[TraCS \\$5k-\\$50k Guidelines](#)

Application Due Date: 07/23/19, plus additional deadlines through 2020



Research Opportunities for Graduate Students & Postdocs

If you are interested in applying for any of these opportunities, contact Phil Lee, Grants Management Officer, at palee@email.unc.edu.



National Institutes of Health

Ruth L. Kirschstein National Research Service Awards (NRSA)

Check guidelines for list of participating institutes

[PA-19-195](#) (F31 Predoctoral)

[PA-19-196](#) (F31D Predoctoral Diversity)

[PA-19-188](#) (F32 Postdoctoral)

Application Due Date: [Standard due dates apply](#)

NINDS Ruth L. Kirschstein National Research Service Award (NRSA) for Training of Postdoctoral Fellows (F32)

National Institute of Neurological Disorders and Stroke

[PAR-16-458](#) (F32 Postdoctoral)

Application Due Date: [Standard due dates apply](#)

NIH Pathway to Independence Award (Parent K99/R00)

Check guidelines for list of participating institutes

[PA-18-397](#) (Independent Clinical Trial Required)

[PA-18-398](#) (Independent Clinical Trial Not Allowed)

Application Due Date: [Standard due dates apply](#)

[dates apply](#)

Drug Abuse Dissertation Research (R36)

National Institute on Drug Abuse

[PA-16-443](#)

Application Due Date: [Standard due dates apply](#)

Mentored Research Scientist Development Award (Parent K01)

Check guidelines for list of participating institutes

[PA-18-363](#) (Independent Clinical Trial Required)

[PA-18-369](#) (Independent Clinical Trial Not Allowed)

Application Due Date: [Standard due dates apply](#)



Research Opportunities, cont.

Mentored Quantitative Research Development Award

Check guidelines for list of participating institutes

[PA-18-395](#) (Parent K25 - Independent Clinical Trial Required)

[PA-18-396](#) (Parent K25 - Independent Clinical Trial Not Allowed)

Application Due Date: [Standard due dates apply](#)

NINDS Advanced Postdoctoral Career Transition Award to Promote Diversity in Neuroscience Research (K22)

National Institute of Neurological Disorders and Stroke

[PAR-18-468](#)

Application Due Date: [Standard due dates apply](#)

BRAIN Initiative Advanced Postdoctoral Career Transition Award to Promote Diversity

National Eye Institute

National Institute on Aging

National Institute on Alcohol Abuse and Alcoholism

National Institute of Biomedical Imaging and Bioengineering

National Institute of Child Health and Human Development

National Institute on Deafness and Other Communication Disorders

National Institute on Drug Abuse

National Institute of Mental Health

National Institute of Neurological Disorders and Stroke

National Center for Complementary and Integrative Health

Office of Research on Women's Health

[PAR-18-813](#) (K99/R00 Independent Clinical Trial Required)

[PAR-18-814](#) (K99/R00 Independent Clinical Trial Not Allowed)

Application Due Date: [Standard due dates apply](#)

Mental Health Research Dissertation Grant to Enhance Workforce Diversity

(R36 Independent Clinical Trial Not Allowed)

National Institute of Mental Health

[PAR-18-894](#)

Application Due Dates: 08/06/19, plus additional deadlines through 2021

BRAIN Initiative Fellows: Ruth L. Kirschstein National Research Service Award (NRSA) Individual Postdoctoral Fellowship (F32)

National Institute of Mental Health

National Eye Institute

National Institute on Aging

National Institute on Alcohol Abuse and Alcoholism

National Institute of Biomedical Imaging and Bioengineering

Eunice Kennedy Shriver National Institute of Child Health and Human Development

National Institute on Deafness and Other Communication Disorders

National Institute on Drug Abuse

National Institute of Neurological Disorders and Stroke

National Center for Complementary and Integrative Health

[RFA-MH-18-510](#)

Application Due Dates: 08/07/19, plus additional deadlines through 2020

APF

David H. and Beverly A. Barlow Grant

[APF Guidelines Here](#)

Application Due Date: 09/15/19

The Drs. Rosalee G. and Raymond A. Weiss Research and Program Innovation Grants

[APF Guidelines Here](#)

Application Due Date: 09/15/19

