

THIS ISSUE

News & Awards:	Page 2
Disting. Alum:	Page 3
Events:	Page 3
Research Opps:	Page 4

IMPT DATES

Spring Break
March 10—18

Holiday
March 30

Classes End
April 27

Reading Days
May 2 and May 5

Final Exams
April 30—May 1
May 3—May 4
May 7—May 8

FOLLOW US!



Psychology & Neuroscience Department Newsletter

Volume 7 | Issue 6

February 2018

Department News

Chelsea Schein, a graduate student in Social Psychology, is the recipient of the 2018 \$10,000 Frank Research in Public Communications Prize. Chelsea presented her work at *frank*, a gathering for social communication practitioners, academics, philanthropists, business leaders, and advocates who use strategic communication to drive social change. She was selected as one of three finalists from a pool of 44 applicants by a review committee of scholars and practitioners. Papers were considered based on their applicability to the field, contribution to public interest communications as an interdisciplinary academic discipline, methodologic rigor, and insight that can be used to innovate the social sector. The finalists presented their work at *frank*, where the audience voted Chelsea as the winner of the \$10,000 prize.

Chelsea won for her work, "The Unifying Moral Dyad: Liberals and Conservatives Share the Same Harm-Based Moral Template", which was published in the *Personality and Social Psychology Bulletin*.



Dr. Enrique Neblett, an Associate Professor of Social Psychology, has been elected as a Member-at-Large of the Society of Research on Adolescence's Executive Council. The Society for Research on Adolescence (SRA) was established in 1984 and is a rapidly growing, dynamic society focused on the theoretical, empirical, and policy research issues of adolescence. Its goals are to advance the understanding of adolescence and enhance the well-being of youth in a globalized world. SRA promotes high-quality research that considers the biological, psychological, and sociocultural aspects of development in context. The Executive Council elects four members-at-large to serve four-year terms.



News, continued.

Holly Shablack, a graduate student in Social Psychology, has been selected as one of twenty-four Dean's Graduate Fellows. Arun Nagendra, a graduate student in Clinical Psychology, has been selected as one of eight Druscilla French Graduate Fellows. Holly and Arun will serve as Graduate Fellows to the College of Arts and Sciences for the 2018-19 academic year.

They were chosen for their accomplishments so far as graduate students and their potential to have a major impact in their fields. Holly and Arun will serve as ambassadors to share their Carolina experiences with prospective graduate students. As Graduate Fellows, they will attend graduate student recruitment events and an Arts and Sciences Foundation Board meeting, and will receive a one-year \$4,000 top-up to their regular stipends and a \$1,000 summer stipend. Congratulations, Holly and Arun!

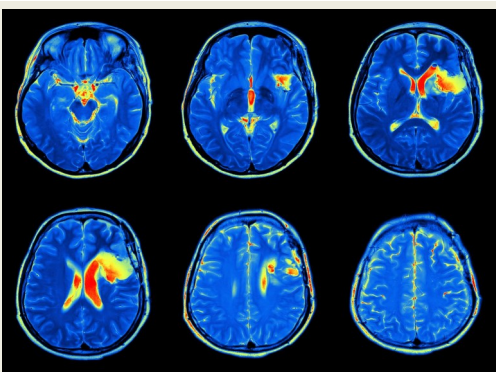


Dr. Eva Telzer, an Assistant Professor of Developmental Psychology, is the recipient of the 2018 Early Career Award from the Society for Research on Adolescence. This Early Career Award recognizes a young scholar whose research, publications, grants, conference presentations, and visibility in the field represent a significant contribution to understanding adolescent development and behavior. Dr. Telzer received this award for her distinguished scholarly contributions through research, publication grants, and conference presentations. Dr. Telzer will receive this award at the 2018 Society for Research on Adolescence's Biennial Meeting, April 12—18, 2018 in Minneapolis, Minnesota.



On February 2, 2018, Professor Emeritus Barclay "Bob" Martin passed away at age 94. He was a long-standing member of the Department of Psychology and Neuroscience, joining the Department as a Full Professor of Clinical Psychology in 1972 and retiring in 1989. He previously served as 18 years as a faculty member and Chair at the Department of Psychology at the University of Wisconsin.

Dr. Martin was known for his research on family therapy, assessment, and modification of family interactions related to psychopathology and stress. He served as the Developmental Psychology Program Director in 1972-73 and 1987-89 and as our Director of Graduate Studies for many years. Dr. Martin taught many courses for the Department, including Advanced Behavior Pathology, Experimental Methods of Personality Study, and Clinical Research Methods, and published two textbooks, "Abnormal Psychology" in 1981 and "Anxiety and Neurotic Disorders: Approaches to Behavior Pathology" in 1971. Dr. Martin was a longtime supporter of the entire field of psychology and he will be deeply missed.



Join us for the 2018 Brain and Behavior Night, as part of the 2018 Brain Awareness Week, at the NRC Building at the North Carolina Museum of Natural Sciences! From 6—7 pm, meet local neuroscientists and interact with hands-on brains and behavior exhibits suitable for all ages. Short, accessible talks by neuroscientists will celebrate national Brain Awareness Weeks and tell you what local neuroscientists are discovering. Over 20 laboratories are participating! At 7 pm, a special guest, prominent neuroscientist Dr. Jeff Lichtman from Harvard University will lead a Science Café. Check out the event on their [Facebook Page](#)!

Distinguished Alum Lecture

The Department of Psychology and Neuroscience is glad to announce that Dr. John G. Holmes is this year's distinguished alumnus award winner.

Dr. Holmes will present "The Structure of Interdependence Shapes Cognition in Relationships" on Wednesday, April 18 at 3:30 PM in Howell 205.

Dr. Holmes earned his B.A. and M.A. at Carleton University and his Ph.D. in Social Psychology at UNC Chapel Hill in 1971. He co-authored a book on interdependence with Dr. Hal Kelley and other leading relationship researchers.

He is a gifted theoretician and researcher in the area of understanding attribution and inference processes in close relationships. Dr. Holmes is a Distinguished Professor Emeritus of the Department of Psychology at the University of Waterloo



Departmental Events

Behavioral and Integrative Neuroscience Seminars

Howell 205, 12:30—1:45 pm

- 2/20 Henry Yin, Ph.D.**
Psychology & Neuroscience
Duke University
- 3/6 Somnath Mukhopadhyay**
Chemistry & Biochemistry
NC Central University
- 3/20 Hendree Jones, Ph.D.**
Obstetrics & Gynecology
UNC Chapel Hill

Cognitive Tea Talks

Davie 347, 12:30-1:30 pm

- 2/2 Kristen Meyer**
Psychology & Neuroscience
UNC Chapel Hill
- 3/1 Shaina Garrison**
Psychology & Neuroscience
UNC Chapel Hill
- 3/8 Jonathan Parsons**
Psychology & Neuroscience
UNC Chapel Hill

Quantitative Forums

Davie 347, 12:00—1:00 pm

- 2/19 Michael Giordano**
Psychology & Neuroscience
UNC Chapel Hill
- 2/26 Eric Youngstrom, Ph.D.**
Psychology & Neuroscience
UNC Chapel Hill
- 3/5 Zachary Fisher**
Psychology & Neuroscience
UNC Chapel Hill

Clinical Lunch Series

Howell 205, 12:00—1:00 pm

- 2/23 New and Revised Practicums Fair**
- 3/2 Alumni Update**
Caroline Adelman, Ph.D.
Chicago Psychotherapy LLC
- 3/23 Diversity Journal Club**
Yun Chen

Developmental Lunch Series

Howell 205, 12:15—1:15 pm

- 2/21 Jorien van Hoorn, Ph.D.**
Christy Rogers, Ph.D.
Psychology & Neuroscience
UNC Chapel Hill
- 2/28 Hayley Estrem, Ph.D., R.N.**
Center for Dev. Science
UNC Chapel Hill
- 3/7 Michaeline Jensen, Ph.D.**
Center for Dev. Science
UNC Chapel Hill

Social ORGs

Davie 302, 11:30—1:00 pm

- 2/19 Workshop**
- 2/26 Marco Bravilla, Ph.D.**
Department of Psychology
Univ. of Milano-Bicocca
- 3/5 Lauren Human, Ph.D.**
Department of Psychology
McGill College



Research Opportunities for Faculty

If you are interested in applying for any of these opportunities, contact Phil Lee, Grants Management Officer, at palee@email.unc.edu.



National Institutes of Health

NIH Research Project Grant (Parent R01 Clinical Trial Not Allowed)

See solicitation for list of participating institutes

[PA-18-484](#)

Application Due Date: [Standard due dates apply](#)

NIH Exploratory/Developmental Research Grant Program (Parent R21 Clinical Trial Not Allowed)

National Eye Institute

National Human Genome Research Institute

National Institute on Aging

National Institute on Alcohol Abuse and Alcoholism

National Institute of Allergy and Infectious Diseases

National Institute of Arthritis and Musculoskeletal and Skin Diseases

National Institute on Drug Abuse

National Institute on Deafness and Other Communication Disorders

National Institute of Dental and Craniofacial Research

National Institute of Environmental Health Sciences

National Institute on Minority Health and Health Disparities

National Institute of Nursing Research

National Library of Medicine

National Center for Complementary and Integrative Health

[PA-18-489](#)

Application Due Date: [Standard due dates apply](#)

NIH Small Research Grant Program (Parent R03 Clinical Trial Not Allowed)

National Human Genome Research Institute

National Institute on Aging

National Institute on Alcohol Abuse and Alcoholism

National Institute of Allergy and Infectious Diseases

National Institute of Biomedical Imaging and Bioengineering

Eunice Kennedy Shriver National Institute of Child Health and Human Development

National Institute on Drug Abuse

National Institute of Environmental Health Sciences

National Institute on Minority Health and Health Disparities

National Institute of Neurological Disorders and Stroke

[PA-18-488](#)

Application Due Date: [Standard due dates apply](#)

NIDA Small Research Grant Program (R03 Clinical Trial Required)

National Institute on Drug Abuse

[PA-18-626](#)

[PA-18-634](#)

Application Due Date: [Standard due dates apply](#)

Mentored Research Scientist Development Award (Parent K01)

National Heart, Lung, and Blood Institute

National Human Genome Research Institute

National Institute on Aging

National Institute on Alcohol Abuse and Alcoholism

National Institute of Arthritis and Musculoskeletal and Skin Diseases

National Institute of Biomedical Imaging and Bioengineering

National Institute of Child Health and Human Development

National Institute on Deafness and Other Communication Disorders

National Institute of Dental and Craniofacial Research

National Institute on Drug Abuse

National Institute of Mental Health

National Institute of Nursing Research
National Institute on Minority Health and Health Disparities

National Center for Complementary and Integrative Health

[PA-18-363](#) (Independent Clinical Trial Required)

[PA-18-369](#) (Independent Clinical Trial Not Allowed)

Application Due Date: [Standard due dates apply](#)

Independent Scientist Award (Parent K02)

National Institute on Aging

National Institute on Alcohol Abuse and Alcoholism

National Institute of Dental and Craniofacial Research

National Institute on Drug Abuse

National Institute of Environmental Health Sciences

National Institute of Neurological Disorders and Stroke

[PA-18-370](#) (Independent Clinical Trial Required)

[PA-18-371](#) (Independent Clinical Trial Not Allowed)

Application Due Date: [Standard due dates apply](#)

Research Supplements to Promote Diversity in Health-Related Research (Admin Supp Clinical Trial Not Allowed)

National Institutes of Health

[PA-18-586](#)

Application Due Date: [Varies By Awarding Institute](#)

Administrative Supplements to Existing NIH Grants and Cooperative Agreements (Parent Admin Supp Clinical Trial Optional)

National Institutes of Health

[PA-18-591](#)

Application Due Date: [Varies By Awarding Institute](#)

Research Supplements to Promote Re-Entry into Biomedical and Behavioral Research Careers (Admin Supp - Clinical Trial



Research Opportunities, cont.

Not Allowed)

National Institutes of Health

[PA-18-592](#)

Application Due Date: [Varies By Awarding Institute](#)

PHS 2018-02 Omnibus Solicitation of the NIH for Small Business Innovation Research Grant Applications

National Institutes of Health, CDC, and FDA

[PA-18-573](#) (Parent SBIR [R43/R44] Clinical Trial Required)

[PA-18-574](#) (Parent SBIR [R43/R44] Clinical Trial Not Allowed)

[PA-18-575](#) (Parent STTR [R41/R42] Clinical Trial Not Allowed)

[PA-18-576](#) (Parent STTR [R41/R42] Clinical Trial Required)

Application Due Date: [Standard due dates apply](#)

Promoting Research in Basic Neuroscience (R01 Clinical Trial Not Allowed)

National Institute of Neurological Disorders and Stroke

[PAS-18-483](#)

Application Due Date: [Standard due dates apply](#)

Women & Sex/Gender Differences in Drug and Alcohol Abuse/Dependence

National Institute on Drug Abuse

National Institute on Alcohol Abuse and Alcoholism

[PA-18-601](#) (R03 Clinical Trial Optional)

[PA-18-602](#) (R21 Clinical Trial Optional)

[PA-18-603](#) (R01 Clinical Trial Optional)

Application Due Date: [Standard due dates apply](#)

Developmentally Tailored HIV Prevention and Care Research for Adolescents and Young Adults

National Institute of Mental Health

National Institute on Drug Abuse

National Institute on Minority Health and Health Disparities

National Institute of Allergy and Infectious Diseases

[PA-18-651](#) (R01 Clinical Trial Optional)

[PA-18-652](#) (R21 Clinical Trial Optional)

[PA-18-653](#) (R34 Clinical Trial Optional)

Application Due Date: [Standard due dates apply](#)

Understanding Processes of Recovery in the Treatment of Alcohol Use Disorder

National Institute on Alcohol Abuse and Alcoholism

[PA-18-619](#) (R01 Clinical Trial Optional)

[PA-18-620](#) (R21 Clinical Trial Optional)

Application Due Date: [Standard due dates apply](#)

Mechanistic investigations of psychosocial stress effects on opioid use patterns

National Institute on Drug Abuse
Office of Behavioral and Social Sciences Research

[PAS-18-624](#) (R01 Clinical Trial Optional)

[PAS-18-625](#) (R21 Clinical Trial Optional)

Application Due Date: [Standard due dates apply](#)

Biobehavioral and Technological Interventions to Attenuate Cognitive Decline in Individuals with Cognitive Impairment or Dementia

National Institute of Nursing Research

National Institute on Aging

[PA 18-347](#) (R21 Clinical Trial Optional)

[PA-18-348](#) (R01 Clinical Trial Optional)

[PA-18-473](#) (R15 Clinical Trial Not Allowed)

Application Due Date: [Standard due dates apply](#)

Synthetic Psychoactive Drugs and Strategic Approaches to Counteract Their Deleterious Effects

National Institute on Drug Abuse

[PAR-18-509](#) (R21 Clinical Trial Optional)

[PAR-18-510](#) (R01 Clinical Trial Optional)

[PAR-18-527](#) (R03 Clinical Trial Optional)

Application Due Date: [Standard due dates apply](#)

Understanding and Modifying Temporal Dynamics of Coordinated Neural Activity
National Institute of Mental Health

[PAR-18-554](#) (R21 Clinical Trial Optional)

[PAR-18-555](#) (R01 Clinical Trial Optional)

Application Due Date: [Standard due dates apply](#)

Research on Comparative Effectiveness and Implementation of HIV/AIDS and Alcohol Interventions (R01 Clinical Trial Optional)

National Institute on Alcohol Abuse and Alcoholism

[PAS-18-557](#)

Application Due Date: [Standard due dates apply](#)

International Research Collaboration on Drug Abuse and Addiction Research

National Institute on Drug Abuse

[PA-18-568](#) (R01 Clinical Trial Optional)

[PA-18-065](#) (R03 Clinical Trial Optional)

[PA-18-066](#) (R21 Clinical Trial Optional)

Application Due Date: [Standard due dates apply](#)

Health Services and Economic Research on the Prevention and Treatment of Drug, Alcohol, and Tobacco Abuse

National Institute on Drug Abuse

National Institute on Alcohol Abuse and Alcoholism

[PA-18-068](#) (R34 Clinical Trial Optional)

[PA-18-069](#) (R03 Clinical Trial Optional)

[PA-18-070](#) (R21 Clinical Trial Optional)

[PA-18-569](#) (R01 Clinical Trial Optional)

Application Due Date: [Standard due dates apply](#)

Research on the Mechanisms and/or Behavioral Outcomes of Multisensory Processing (R01 - Clinical Trial Optional)

National Institute on Aging

National Cancer Institute

National Eye Institute

National Institute of Child Health and Human Development

National Institute on Deafness and Other Communication Disorders

National Institute on Drug Abuse

National Institute of Neurological Disorders and Stroke



Research Opportunities, cont.

National Center for Complementary and Integrative Health

Office of Behavioral and Social Sciences Research

[PA-18-545](#)

Application Due Date: [Standard due dates apply](#)

Using Information Technology to Support Systematic Screening and Treatment of Depression in Oncology Practices

National Cancer Institute

[PA-18-492](#) (R21 Clinical Trial Optional)

[PA-18-493](#) (R01 Clinical Trial Optional)

Application Due Date: [Standard due dates apply](#)

Detecting and Preventing Suicide Behavior, Ideation and Self-Harm in Youth in Contact with the Juvenile Justice System

National Institute of Mental Health

[PAR-18-228](#) (R34 Clinical Trial Required)

[PAR-18-479](#) (R01 Clinical Trial Required)

Application Due Date: [Standard due dates apply](#)

Feasibility Clinical Trials of Mind and Body Interventions for NCCIH High Priority Research Topics (R34 Clinical Trial Required)

National Center for Complementary and Integrative Health

[PA-18-417](#)

Application Due Date: [Standard due dates apply](#)

Population Health Interventions: Integrating Individual and Group Level Evidence (R01 Clinical Trials Not Allowed)

National Cancer Institute

National Institute of Dental and Craniofacial Research

National Institute on Deafness and Other Communication Disorders

Office of Behavioral and Social Sciences Research

[PA-18-356](#)

Application Due Date: [Standard due dates apply](#)

Healthy Habits: Timing for Developing

Sustainable Healthy Behaviors in Children and Adolescents

National Institute of Nursing Research

[PA-18-354](#) (R21 Clinical Trial Optional)

[PA-18-355](#) (R01 Clinical Trial Optional)

Application Due Date: [Standard due dates apply](#)

Population Health Interventions: Integrating Individual and Group Level Evidence (R01 Clinical Trial Optional)

National Cancer Institute

National Institute on Deafness and Other Communication Disorders

National Institute on Drug Abuse

Office of Behavioral and Social Sciences Research

[PA-18-385](#)

Application Due Date: [Standard due dates apply](#)

Population Health Interventions: Integrating Individual and Group Level Evidence (R21)

Office of Behavioral and Social Sciences Research

National Cancer Institute

National Institute of Dental and Craniofacial Research

National Institute on Deafness and Other Communication Disorders

[PA-18-406](#) (Clinical Trial Not Allowed)

[PA-18-407](#) (Clinical Trial Optional)

Application Due Date: [Standard due dates apply](#)

Strengthening the HIV Pre-Exposure Prophylaxis (PrEP) Care Continuum through Behavioral, Social, and Implementation Science

National Institute of Mental Health

[PA-18-271](#) (R21 Clinical Trial Optional)

[PA-18-281](#) (R01 Clinical Trial Optional)

Application Due Date: [Standard due dates apply](#)

Education and Health: New Frontiers

Office of Behavioral and Social Sciences Research

National Cancer Institute

National Institute on Aging

Eunice Kennedy Shriver National Institute of Child Health and Human Development

National Institute on Drug Abuse

[PAR-18-362](#) (R21 Clinical Trial Optional)

[PAR-18-387](#) (R01 Clinical Trial Optional)

[PAR-18-388](#) (R03 Clinical Trial Optional)

Application Due Date: [Standard due dates apply](#)

Methodology and Measurement in the Behavioral and Social Sciences

Office of Behavioral and Social Sciences Research

National Cancer Institute

National Eye Institute

National Institute on Aging

National Institute on Alcohol Abuse and Alcoholism

National Institute on Deafness and Other Communication Disorders

National Center for Complementary and Integrative Health

[PAR-18-352](#) (R01 Clinical Trial Optional)

[PAR-18-378](#) (R21 Clinical Trial Optional)

Application Due Date: [Standard due dates apply](#)

Family-Centered Self-Management of Chronic Conditions (R21)

National Institute of Nursing Research

[PA-18-380](#) (Clinical Trial Optional)

[PA-18-383](#) (Clinical Trial Optional)

Application Due Date: [Standard due dates apply](#)

NIH Research Project Grant (Parent R01 Clinical Trial Required)

National Institutes of Health

[PA-18-345](#)

Application Due Date: [Standard due dates apply](#)

NIH Exploratory/Developmental Research Grant Program (Parent R21 Clinical Trial Required)

National Institutes of Health

[PA-18-344](#)

Application Due Date: [Standard due dates apply](#)



Research Opportunities, cont.

NIMH Exploratory/Developmental Research Grant (R21 Clinical Trial Not Allowed)

National Institute of Mental Health

[PA-18-350](#)

Application Due Date: [Standard due dates apply](#)

The Health of Sexual and Gender Minority (SGM) Populations

National Institute of Child Health and Human Development

National Cancer Institute

National Institute on Alcohol Abuse and Alcoholism

National Institute of Allergy and Infectious Diseases

National Institute on Deafness and Other Communication Disorders

National Institute of Dental and Craniofacial Research

National Institute on Drug Abuse

National Institute of Mental Health

National Institute on Minority Health and Health Disparities

Office of Behavioral and Social Sciences Research

[PA-18-037](#) (R01 Clinical Trial Optional)

[PA-18-040](#) (R21 Clinical Trial Optional)

[PA-18-054](#) (R03 Clinical Trial Optional)

[PA-18-210](#) (R15 Clinical Trial Optional)

Application Due Date: [Standard due dates apply](#)

Alcohol Use Disorders: Behavioral Treatment, Services and Recovery Research

National Institute on Alcohol Abuse and Alcoholism

[PA-18-194](#) (R01 Clinical Trial Optional)

[PA-18-201](#) (R03 Clinical Trial Optional)

[PA-18-202](#) (R21 Clinical Trial Optional)

Application Due Date: [Standard due dates apply](#)

Addressing Unmet Needs in Persons with Dementia to Decrease Behavioral Symptoms and Improve Quality of Life

National Institute of Nursing Research

[PA-18-147](#) (R01 Clinical Trial Optional)

[PA-18-165](#) (R21 Clinical Trial Optional)

Application Due Date: [Standard due dates apply](#)

Accelerating the Pace of Drug Abuse Research Using Existing Data (R01 Clinical Trial Optional)

National Institute on Drug Abuse

National Cancer Institute

National Institute on Alcohol Abuse and Alcoholism

[PAR-18-062](#)

Application Due Date: [Standard due dates apply](#)

Dissemination and Implementation Research in Health

National Institutes of Health

[PAR-18-007](#) (R01 Clinical Trial Optional)

[PAR-18-017](#) (R21 Clinical Trial Optional)

[PAR-16-237](#) (R03)

Application Due Date: [Standard due dates apply](#)

Behavioral & Integrative Treatment Development Program

National Institute on Drug Abuse

National Institute on Alcohol Abuse and Alcoholism

Office of Behavioral and Social Sciences Research

[PA-18-055](#) (R01 Clinical Trial Optional)

[PA-18-073](#) (R34 Clinical Trial Optional)

[PA-18-074](#) (R03 Clinical Trial Optional)

Application Due Date: [Standard due dates apply](#)

Marijuana, Prescription Opioid, or Prescription Benzodiazepine Drug Use Among Older Adults

National Institute on Drug Abuse

National Institute on Aging

[PA-18-061](#) (R01 Clinical Trial Optional)

[PA-18-079](#) (R21 Clinical Trial Optional)

[PA-18-080](#) (R03 Clinical Trial Optional)

Application Due Date: [Standard due dates apply](#)

Neuroscience Research on Drug Abuse

National Institute on Drug Abuse

[PA-18-078](#) (R21 Clinical Trial Optional)

[PA-18-060](#) (R01 Clinical Trial Optional)

Application Due Date: [Standard due dates apply](#)

Prescription Drug Abuse

National Institute on Drug Abuse

[PA-18-058](#) (R21 Clinical Trial Optional)

[PA-18-076](#) (R21 Clinical Trial Optional)

Application Due Date: [Standard due dates apply](#)

The Application of Big Data Analytics to Drug Abuse Research (R01 Clinical Trial Optional)

National Institute on Drug Abuse

[PA-18-057](#)

Application Due Date: [Standard due dates apply](#)

Behavioral & Integrative Treatment Development Program

National Institute on Drug Abuse

National Institute on Alcohol Abuse and Alcoholism

Office of Behavioral and Social Sciences Research

[PA-18-073](#) (R34 Clinical Trial Optional)

[PA-18-074](#) (R03 Clinical Trial Optional)

[PA-18-075](#) (R01 Clinical Trial Optional)

Application Due Date: [Standard due dates apply](#)

Typical and Atypical Patterns of Language & Literacy in Dual Language Learners

National Institute on Deafness and Other Communication Disorders

Eunice Kennedy Shriver National Institute of Child Health and Human Development

[PA-18-316](#) (R01 - Clinical Trial Optional)

[PA-18-328](#) (R21 - Clinical Trial Optional)

Application Due Date: [Standard due dates apply](#)

Fundamental Science Research on Mind and Body Approaches

National Center for Complementary and Integrative Health

[PA-18-322](#) (R21 - Clinical Trial Optional)

[PA-18-323](#) (R01 - Clinical Trial)



Research Opportunities, cont.

Application Due Date: [Standard due dates apply](#)

New Onset Depressive Symptoms in Acute Illness

National Institute of Nursing Research
National Institute of Mental Health
[PA-17-487](#) (R21 Clinical Trial Not Allowed)
[PA-17-488](#) (R01 Clinical Trial Not Allowed)
Application Due Date: [Standard due dates apply](#)

Research on the Health of Transgender and Gender Nonconforming Populations

National Institute of Child Health and Human Development
National Cancer Institute
National Human Genome Research Institute
National Institute on Aging
National Institute on Alcohol Abuse and Alcoholism
National Institute of Allergy and Infectious Diseases
National Institute on Deafness and Other Communication Disorders
National Institute of Dental and Craniofacial Research
National Institute of Environmental Health Sciences
National Institute of Mental Health
National Institute of Nursing Research
National Institute on Minority Health and Health Disparities
National Center for Complementary and Integrative Health
Office of AIDS Research
Office of Research on Women's Health
Division of Program Coordination, Planning and Strategic Initiatives: Sexual & Gender Minority Research Office
[PA-17-477](#) (R21)
[PA-17-478](#) (R01)
Application Due Date: [Standard due dates apply](#)

Understanding and Modifying Temporal Dynamics of Coordinated Neural Activity
National Institute of Mental Health
[PA-18-554](#) (R21 Clinical Trial Optional)
[PA-18-555](#) (R01 Clinical Trial Optional)

Application Due Date: [Standard due dates apply](#)

Typical and Atypical Patterns of Language & Literacy in Dual Language Learners

National Institute on Deafness and Other Communication Disorders
Eunice Kennedy Shriver National Institute of Child Health and Human Development
[PA-18-316](#) (R01 – Clinical Trial Optional)
[PA-18-328](#) (R21 – Clinical Trial Optional)
Application Due Date: [Standard due dates apply](#)

First in Human and Early Stage Clinical Trials of Novel Investigational Drugs or Devices for Psychiatric Disorders (U01 Clinical Trial Required)
National Institute of Mental Health
[PA-18-427](#)
Application Due Date: [Standard due dates apply](#)
Cellular and Molecular Biology of Complex Brain Disorders
National Institute of Mental Health
[PA-17-309](#) (R01)
[PA-17-310](#) (R21)
Application Due Date: [Standard due dates apply](#)

Understanding Processes of Recovery in the Treatment of Alcohol Use Disorder
National Institute on Alcohol Abuse and Alcoholism
[PA-18-620](#) (R21 Clinical Trial Optional)
[PA-18-619](#) (R01 Clinical Trial Optional)
Application Due Date: [Standard due dates apply](#)

Initiation of a Mental Health Family Navigator Model to Promote Early Access, Engagement and Coordination of Needed Mental Health Services for Children and Adolescents
National Institute of Mental Health
[PA-18-428](#) (R01 Clinical Trial Required)
[PA-18-429](#) (R34 Clinical Trial Required)
Application Due Date: [Standard due dates apply](#)

Pilot Studies to Test the Initiation of a Mental Health Family Navigator Model to Promote Early Access, Engagement and Coordination of Needed Mental Health Services for Children and Adolescents
National Institute of Mental Health
[PAR-18-428](#) (R01 Clinical Trial Required)
[PAR-18-429](#) (R34 Clinical Trial Required)
Application Due Date: [Standard due dates apply](#)

Effectiveness Trials for Post-Acute Interventions and Services to Optimize Longer-term Outcomes
National Institute of Mental Health
[PAR-18-430](#) (R01 Clinical Trial Required)
[PAR-18-431](#) (R34 Clinical Trial Required)
Application Due Date: [Standard due dates apply](#)

Innovative Mental Health Services Research Not Involving Clinical Trials (R01)
National Institute of Mental Health
[PAR-17-264](#)
Application Due Date: [Standard due dates apply](#)

NICHHD Exploratory/Developmental Research Grant (R21 Clinical Trial Optional)
National Institute of Child Health and Human Development
[PA-18-482](#)
Application Due Date: [Standard due dates apply](#)

From Genomic Association to Causation: A Convergent Neuroscience Approach for Integrating Levels of Analysis to Delineate Brain Function in Neuropsychiatry
National Institute of Mental Health
[PAR-17-253](#) (R01)
[PAR-17-252](#) (Collaborative R01)
[PAR-17-179](#) (U01)
[PAR-17-176](#) (Collaborative U01)
Application Due Date: [Standard due dates apply](#)

Clinical Studies of Mental Illness Not Involving Clinical Trials (Collaborative R01)
National Institute of Mental Health
[PAR-17-256](#)
Application Due Date: [Standard due](#)



Research Opportunities, cont.

[dates apply](#)

Marijuana, Prescription Opioid, or Prescription Benzodiazepine Drug Use Among Older Adults

National Institute on Drug Abuse

National Institute on Aging

[PAR-18-061](#) (R01 Clinical Trial Optional)

[PAR-18-079](#) (R21 Clinical Trial Optional)

[PAR-18-080](#) (R03 Clinical Trial Optional)

Application Due Date: [Standard due dates apply](#)

From Genomic Association to Causation: A Convergent Neuroscience Approach for Integrating Levels of Analysis to Delineate Brain Function in Neuropsychiatry

National Institute of Mental Health

[PAR-17-176](#) (Collaborative U01)

[PAR-17-179](#) (U01)

Application Due Date: [Standard due dates apply](#)

Formative and Pilot Intervention Research for Prevention and Treatment of HIV/AIDS (R34 Clinical Trial Optional)

National Institute of Mental Health

[PA-18-276](#)

Application Due Date: [Standard due dates apply](#)

Health Promotion Among Racial and Ethnic Minority Males

National Institute of Nursing Research

National Institute of Diabetes and Digestive and Kidney Diseases

[PA-18-144](#) (R01 Clinical Trial Optional)

[PA-18-162](#) (R21 Clinical Trial Optional)

Application Due Date: [Standard due dates apply](#)

Understanding Factors in Infancy and Early Childhood (Birth to 24 months) That Influence Obesity Development (R01 Clinical Trial Optional)

National Institute of Diabetes and Digestive and Kidney Diseases

National Institute of Child Health and Human Development

Office of Behavioral and Social Sciences Research

National Institute on Minority Health and Health Disparities

[PA-18-032](#)

Application Due Date: [Standard due dates apply](#)

Accelerating the Pace of Drug Abuse Research Using Existing Data (R01 Clinical Trial Optional)

National Institute on Drug Abuse

National Cancer Institute

National Institute on Alcohol Abuse and Alcoholism

[PAR-18-062](#)

Application Due Date: [Standard due dates apply](#)

Prescription Drug Abuse

National Institute on Drug Abuse

[PA-18-076](#) (R21 Clinical Trial Optional)

[PA-18-058](#) (R01 Clinical Trial Optional)

Application Due Date: [Standard due dates apply](#)

Program for Extramural/Intramural Alcohol Research Collaborations (U01 Clinical Trial Optional)

National Institute on Alcohol Abuse and Alcoholism

[PAR-18-195](#)

Application Due Date: [Standard due dates apply](#)

Preclinical Research on Model Organisms to Predict Treatment Outcomes for Disorders Associated with Intellectual and Developmental Disabilities (R01)

National Institute of Child Health and Human Development

[PAR-16-215](#)

Application Due Date: [Standard due dates apply](#)

Outcome Measures for Use in Treatment Trials of Individuals with Intellectual and Developmental Disabilities (R01 Clinical Trial Optional)

National Institute of Child Health and Human Development

[PAR-18-039](#)

Application Due Date: [Standard due](#)

[dates apply](#)

NINDS Faculty Development Award to Promote Diversity in Neuroscience Research (K01)

National Institute of Neurological Disorders and Stroke

[PAR-18-486](#) (K01 Clinical Trial Required)

[PAR-18-490](#) (K01 Independent Clinical Trial Not Allowed)

Application Due Date: [Standard due dates apply](#)

Mechanisms, Models, Measurement, & Management in Pain Research

National Institute of Nursing Research

National Institute on Aging

National Institute of Arthritis and Musculoskeletal and Skin Diseases

National Institute on Drug Abuse

National Institute of Dental and Craniofacial Research

National Center for Complementary and Integrative Health

National Institute on Minority Health and Health Disparities

[PA-18-159](#) (R21 Clinical Trial Optional)

[PA-18-141](#) (R01 Clinical Trial Optional)

Application Due Date: [Standard due dates apply](#)

Diet and Physical Activity Assessment Methodology (R01 Clinical Trial Optional)

National Institute of Diabetes and Digestive and Kidney Diseases

National Cancer Institute

National Institute on Alcohol Abuse and Alcoholism

National Center for Complementary and Integrative Health

Office of Dietary Supplements

[PA-18-010](#)

Application Due Date: [Standard due dates apply](#)

Understanding Factors in Infancy and Early Childhood (Birth to 24 months) That Influence Obesity Development (R01 Clinical Trial Optional)

National Institute of Diabetes and Digestive and Kidney Diseases



Research Opportunities, cont.

National Institute of Child Health and Human Development
National Institute on Minority Health and Health Disparities
Office of Behavioral and Social Sciences Research

[PA-18-032](#)

Application Due Date: [Standard due dates apply](#)

Physical Activity and Weight Control Interventions Among Cancer Survivors: Effects on Biomarkers of Prognosis and Survival
National Cancer Institute

[PAR-18-006](#) (R01 Clinical Trial Optional)

[PAR-18-016](#) (R21 Clinical Trial Optional)

Application Due Date: [Standard due dates apply](#)

Behavioral & Integrative Treatment Development Program

National Institute on Drug Abuse
National Institute on Alcohol Abuse and Alcoholism
Office of Behavioral and Social Sciences Research

[PA-18-055](#) (R01 Clinical Trial Optional)

[PA-18-073](#) (R34 Clinical Trial Optional)

[PA-18-074](#) (R03 Clinical Trial Optional)

Application Due Date: [Standard due dates apply](#)

Clinical Development of Minimally-Invasive Bioassays to Support Outpatient Clinical Trials of Therapeutics for Substance Use Disorders

National Institute on Drug Abuse

[PA-18-075](#) (R21 Clinical Trial Optional)

[PA-18-056](#) (R01 Clinical Trial Optional)

Application Due Date: [Standard due dates apply](#)

Behavioral Science Track Award for Rapid Transition (B/Start)(R03 Clinical Trial Optional)

National Institute on Drug Abuse

[PAR-18-082](#)

Application Due Date: [Standard due dates apply](#)

Biobehavioral and Technological Interventions to Attenuate Cognitive Decline in Individuals with Cognitive Impairment or Dementia

National Institute of Nursing Research

National Institute on Aging

[PA-18-347](#) (R21 Clinical Trial Optional)

[PA-18-473](#) (R15 Clinical Trial Optional)

[PA-18-348](#) (R01 Clinical Trial Optional)

Application Due Date: [Standard due dates apply](#)

Women & Sex/Gender Differences in Drug and Alcohol Abuse/Dependence

National Institute on Drug Abuse

National Institute on Alcohol Abuse and Alcoholism

[PA-18-601](#) (R03 Clinical Trial Optional)

[PA-18-602](#) (R21 Clinical Trial Optional)

[PA-18-603](#) (R01 Clinical Trial Optional)

Application Due Date: [Standard due dates apply](#)

Clinical Studies of Mental Illness Not Involving Treatment Development, Efficacy, or Effectiveness Trials National Institute of Mental Health

[PAR-17-256](#) (Collaborative R01)

Application Due Date: [Standard due dates apply](#)

Lab to Marketplace: Tools for Brain and Behavioral Research

National Institute of Mental Health

National Institute of Deafness and Other Communication Disorders

[PAR-18-565](#) (R43/R44 Clinical Trial Optional)

Application Due Date: [Standard due dates apply](#)

BRAIN Initiative: Development, Optimization, and Validation of Novel Tools and Technologies for Neuroscience Research

National Institute of Mental Health

National Institute of Aging

National Institute on Alcohol Abuse and Alcoholism

National Institute on Drug Abuse

National Institute of Neurological Disor-

ders and Stroke

National Institute on Deafness and Other Communication Disorders

[PAR-18-515](#) (STTR) (R41/R42 Clinical Trial Not Allowed)

[PAR-18-501](#) (SBIR) (R43/R44 Clinical Trial Not Allowed)

Application Due Date: [Standard due dates apply](#)

Functional Wellness in HIV: Maximizing the Treatment Cascade

National Institute of Nursing Research
Office of Behavioral and Social Sciences Research

[PA-18-136](#) (R01 Clinical Trial Optional)

[PA-18-154](#) (R21 Clinical Trial Optional)

Application Due Date: [Standard due dates apply](#)

International Research Collaboration on Drug Abuse and Addiction Research

National Institute on Drug Abuse

[PA-18-065](#) (R03 Clinical Trial Optional)

[PA-18-066](#) (R21 Clinical Trial Optional)

[PA-18-568](#) (R01 Clinical Trial Optional)

Application Due Date: [Standard due dates apply](#)

Pilot and Feasibility Studies in Preparation for Drug and Alcohol Abuse Prevention Trials (R34 Clinical Trial Optional)

National Institute on Drug Abuse

National Institute on Alcohol Abuse and Alcoholism

[PA-18-067](#)

Application Due Date: [Standard due dates apply](#)

Screening and Brief Alcohol Interventions in Underage and Young Adult Populations

National Institute on Alcohol Abuse and Alcoholism

[PA-18-199](#) (R21 Clinical Trial Optional)

[PA-18-193](#) (R01 Clinical Trial Optional)

[PA-18-200](#) (R03 Clinical Trial Optional)

Application Due Date: [Standard due dates apply](#)

Alcohol Use Disorders: Behavioral Treat-



Research Opportunities, cont.

ment, Services and Recovery Research
National Institute on Alcohol Abuse and Alcoholism

[PA-18-194](#) (R01 Clinical Trial Optional)

[PA-18-201](#) (R03 Clinical Trial Optional)

[PA-18-202](#) (R21 Clinical Trial Optional)

Application Due Date: [Standard due dates apply](#)

Research on the Mechanisms and/or Behavioral Outcomes of Multisensory Processing (R01 Clinical Trial Optional)

National Institute on Aging

National Center for Complementary and Integrative Health

National Cancer Institute

National Eye Institute

National Institute of Child Health and Human Development

National Institute on Drug Abuse

National Institute on Deafness and Other Communication Disorders

National Institute of Dental and Craniofacial Research

National Institute of Neurological Disorders and Stroke

Office of Behavioral and Social Sciences Research

Office of Research on Women's Health

[PA-18-545](#)

Application Due Date: [Standard due dates apply](#)

Major Opportunities for Research in Epidemiology of Alzheimer's Disease and Cognitive Resilience (R01)

National Institute on Aging

[PAR-15-356](#)

Application Due Date: [Standard due dates apply](#)

Research Career Enhancement Award to Advance Therapy Development for Alzheimer's (K18)

National Institute on Aging

[PAR-17-052](#)

Application Due Date: [Standard due dates apply](#)

Leveraging Existing Cohort Studies to Clari-

fy Risk and Protective Factors for Alzheimer's Disease and Related Dementias (R01)

National Institute on Aging

[PAR-17-054](#)

Application Due Date: [Standard due dates apply](#)

Target Assessment, Engagement and Data Replicability to Improve Substance Use Disorders Treatment Outcomes

National Institute on Drug Abuse

National Cancer Institute

National Institute on Alcohol Abuse and Alcoholism

[PAR-18-085](#) (R33 Clinical Trial Optional)

[PAR-18-086](#) (R21/R33 Clinical Trial Optional)

Application Due Date: [Standard due dates apply](#)

Research on Autism Spectrum Disorders

National Institute of Mental Health

National Institute of Child Health and Human Development

National Institute on Deafness and Other Communication Disorders

National Institute of Environmental Health Sciences

National Institute of Neurological Disorders and Stroke

[PA-18-399](#) (R03 Clinical Trial Optional)

[PA-18-400](#) (R21 Clinical Trial Optional)

[PA-18-401](#) (R01 Clinical Trial Optional)

Application Due Date: [Standard due dates apply](#)

Mentored Quantitative Research Development Award

National Heart, Lung, and Blood Institute

National Institute on Aging

National Institute on Alcohol Abuse and Alcoholism

National Institute of Allergy and Infectious Diseases

National Institute of Arthritis and Musculoskeletal and Skin Diseases

National Institute of Biomedical Imaging and Bioengineering

Eunice Kennedy Shriver National Institute

of Child Health and Human Development
National Institute on Deafness and Other Communication Disorders

National Institute of Dental and Craniofacial Research

National Institute of Diabetes and Digestive and Kidney Diseases

National Institute on Drug Abuse

National Institute of Environmental Health Sciences

National Institute of General Medical Sciences

[PA-18-395](#) (Parent K25 - Independent Clinical Trial Required)

[PA-18-396](#) (Parent K25 - Independent Clinical Trial Not Allowed)

Application Due Date: [Standard due dates apply](#)

Development and/or Validation of Devices or Electronic Systems to Monitor or Enhance Mind and Body Interventions

National Center for Complementary and Integrative Health

[PAS-18-120](#) (R43/R44 Clinical Trial Optional)

[PAS-18-121](#) (R41/R42 Clinical Trial Optional)

Application Due Date: [Standard due dates apply](#)

Tools for Clinical Care and Management of Alzheimer's Disease (AD) and Its Comorbidities

National Institute on Aging

[PAR-17-066](#) (R41/R42)

[PAR-17-067](#) (R43/R44)

Application Due Date: [Standard due dates apply](#)

Advancing Research on Alzheimer's Disease (AD) and Alzheimer's-Disease-Related Dementias (ADRD)

National Institute on Aging

[PAS-18-187](#) (R43/R44 Clinical Trial Optional)

[PAS-18-188](#) (R41/R42 Clinical Trial Optional)

Application Due Date: [Standard due dates apply](#)



Research Opportunities, cont.

Chronic Condition Self-Management in Children and Adolescents

National Institute of Nursing Research
[PA-18-151](#) (R01 Clinical Trial Optional)
[PA-18-168](#) (R21 Clinical Trial Optional)

Application Due Date: [Standard due dates apply](#)

Basic Mechanisms of Brain Development Mediating Substance Use and Dependence (R01)

National Institute on Drug Abuse
 National Institute on Alcohol Abuse and Alcoholism

[PA-17-119](#)

Application Due Date: [Standard due dates apply](#)

Perception and Cognition Research to Inform Cancer Image Interpretation

National Cancer Institute
 National Institute of Biomedical Imaging and Bioengineering

[PAR-18-641](#) (R21 Clinical Trial Optional)

[PAR-18-640](#) (R01 Clinical Trial Optional)

Application Due Date: [Standard due dates apply](#)

Innovations in Mechanisms and Interventions to Address Mental Health in HIV Prevention and Care Continuum

National Institute of Mental Health
 National Institute on Drug Abuse

[PA-18-274](#) (R01 Clinical Trial Optional)

[PA-18-275](#) (R21 Clinical Trial Optional)

Application Due Date: [Standard due dates apply](#)

Advancing our Understanding of the Brain Epitranscriptomics

National Institute of Mental Health
 National Institute on Drug Abuse

[PAR-17-152](#) (R21)

[PAR-17-153](#) (R01)

Application Due Date: [Standard due dates apply](#)

Functional Genetics, Epigenetics, and Non-coding RNAs in Substance Use Disorders

National Institute on Drug Abuse

[PA-17-155](#) (R01)

[PA-17-157](#) (R21)

Application Due Date: [Standard due dates apply](#)

Innovations in HIV Testing, Adherence, and Retention to Optimize HIV Care Continuum Outcomes

National Institute of Mental Health
[PA-18-277](#) (R21 Clinical Trial Optional)

[PA-18-278](#) (R01 Clinical Trial Optional)

Application Due Date: [Standard AIDS due dates apply](#)

AIDS-Science Track Award for Research Transition (R03 Clinical Trial Optional)

National Institute on Drug Abuse

[PA-18-072](#)

Application Due Date: [Standard AIDS due dates apply](#)

HIV/AIDS High Priority Drug Abuse Research (R01 Clinical Trial Optional)

National Institute on Drug Abuse

[PAS-18-063](#)

Application Due Date: [Standard AIDS due dates apply](#)

Targeted basic behavioral and social science and intervention development for HIV prevention and care

National Institute of Mental Health

[PA-18-272](#) (R21 Clinical Trial Optional)

[PA-18-273](#) (R01 Clinical Trial Optional)

Application Due Date: [Standard AIDS due dates apply](#)

Targeted Implementation Science to Achieve 90/90/90 Goals for HIV/AIDS Prevention and Treatment

National Institute of Mental Health

[PA-18-279](#) (R01 Clinical Trial Optional)

[PA-18-280](#) (R21 Clinical Trial Optional)

Application Due Date: [Standard AIDS due dates apply](#)

Administrative Supplement for Research on Sex/Gender Influences (Admin Supp

Clinical Trial Optional)

National Institutes of Health

[PA-18-658](#)

Application Due Date: 03/26/18

Research To Address Sleep Disorders in the Context of Medical Rehabilitation (R01)

National Institute of Child Health and Human Development

National Institute of Nursing Research

[PAR-17-163](#)

Application Due Dates: 03/30/18, plus additional deadlines through 2019

Investigator Initiated Extended Clinical Trial (R01 Clinical Trial Required)

National Institute of Allergy and Infectious Diseases

National Institute on Aging

National Institute of General Medical Sciences

[PAR-18-630](#)

Application Due Date: 04/10/18, plus additional deadlines through 2019

Dementia Care and Caregiver Support Interventions (R01 - Clinical Trial Required)

National Institute on Aging

[RFA-AG-18-030](#)

Application Due Date: 04/10/18, plus additional deadlines through 2019

Leveraging Cognitive Neuroscience to Improve Assessment of Cancer Treatment-Related Cognitive Impairment

National Cancer Institute

[PAR-18-605](#) (R01 Clinical Trial Optional)

[PAR-18-606](#) (R21 Clinical Trial Optional)

Application Due Dates: 04/11/18, plus additional deadlines through 2019

Predicting Behavioral Responses to Population-Level Cancer Control Strategies (R21 Clinical Trial Optional)

National Cancer Institute

[PAR-18-024](#)

Application Due Dates: 04/11/18, plus additional deadlines through 2019



Research Opportunities, cont.

Evaluating the NIDA Standardized Research E-Cigarette in Risk Reduction and Related Studies (U01)

National Institute on Drug Abuse

[PAR-17-156](#)

Application Due Dates: 04/24/18, plus additional deadlines through 2019

Clinical, Behavioral and Physiological Research Testing Current and Novel Closed Loop Systems (R01 Clinical Trial Required)

National Institute of Diabetes and Digestive and Kidney Diseases

[RFA-DK-17-023](#)

Application Due Dates: 04/26/18 and 12/06/18

NIDA Mentored Clinical Scientists Development Program Award in Drug Abuse and Addiction (K12)

National Institute on Drug Abuse

[PAR-15-119](#)

**Letter of Intent required, LoI due 05/12/17 for 06/12/17 deadline
Application Due Date: 06/12/17**

Silvio O. Conte Centers for Basic Neuroscience or Translational Mental Health Research (P50)

National Institute of Mental Health

[PAR-17-168](#)

Application Due Date: 05/24/18, plus additional deadlines through 2019

NIMH Mentoring Networks for Mental Health Research Education (R25)

National Institute of Mental Health

[PAR-17-080](#)

Application Due Date: 05/24/18, plus additional deadlines through 2019

NIMH Short Courses for Mental Health-Related Research Education (R25)

National Institute of Mental Health

[PAR-17-082](#)

Application Due Date: 05/24/18, plus additional deadlines through 2019

Jointly Sponsored Ruth L. Kirschstein National Research Service Award Institutional

Predctoral Training Program in the Neurosciences (T32)

National Institute of Neurological Disorders and Stroke

National Institute on Aging

National Institute on Drug Abuse

National Institute of General Medical Sciences

National Institute of Mental Health

[PAR-17-096](#)

Application Due Date: 05/25/18, plus additional deadlines through 2019

Perception and Cognition Research to Inform Cancer Image Interpretation

National Cancer Institute

National Institute of Biomedical Imaging and Bioengineering

[PAR-18-640](#) (R01 Clinical Trial Optional)

[PAR-18-641](#) (R21 Clinical Trial Optional)

Application Due Date: 05/30/18, plus additional deadlines through 2019

Research to Support the Reduction and Elimination of Mental Health Disparities (Admin Supp Clinical Trial Optional)

National Institute of Mental Health

[PA-18-621](#)

Application Due Date: 06/01/18, plus additional deadlines through 2020

BRAIN Initiative: Biology and Biophysics of Neural Stimulation (R01 Clinical Trial Optional)

National Institute of Neurological Disorders and Stroke

National Eye Institute

National Institute on Aging

National Institute on Alcohol Abuse and Alcoholism

National Institute of Biomedical Imaging and Bioengineering

National Institute of Child Health and Human Development

National Institute on Deafness and Other Communication Disorders

National Institute on Drug Abuse

National Institute of Mental Health

National Center for Complementary and Integrative Health

[RFA-NS-18-018](#)

Application Due Dates: 06/06/18, plus additional deadlines through 2020

Methods for Prevention Packages Program IV (MP3 IV) (R01)

National Institute of Allergy and Infectious Diseases

National Institute of Mental Health

[PAR-16-124](#)

Application Due Date: 06/07/18

Mechanism for Time-Sensitive Drug Abuse Research (R21 Clinical Trial Optional)

National Institute on Drug Abuse

[PAR-18-064](#)

Application Due Dates: 06/08/18 and 11/08/18

Improving Smoking Cessation in Socioeconomically Disadvantaged Populations via Scalable Interventions

National Cancer Institute

[PAR-16-201](#) (R21)

[PAR-16-202](#) (R01)

Application Due Date: 06/13/18, plus additional deadlines through 2019

Pilot Effectiveness Trials for Treatment, Preventive and Services Interventions (R34)

National Institute of Mental Health

[RFA-MH-17-612](#)

Application Due Dates: 06/15/18 and 10/15/18

Development of Psychosocial Therapeutic and Preventive Interventions for Mental Disorders

National Institute of Mental Health

[RFA-MH-17-604](#) (R61/R33)

[RFA-MH-17-606](#) (R33)

Application Due Dates: 06/15/18 and 10/15/18

Clinical Trials to Test the Effectiveness of Treatment, Preventive, and Services Interventions

National Institute of Mental Health

[RFA-MH-17-608](#) (R01)



Research Opportunities, cont.

[RFA-MH-17-610](#) (Collaborative R01)

Application Due Dates: 06/15/18 and 10/15/18

Pilot Effectiveness Trials for Treatment, Preventive and Services Interventions (R34)

National Institute of Mental Health

[RFA-MH-17-612](#)

Application Due Dates: 06/15/18 and 10/15/18

Confirmatory Efficacy Clinical Trials of Non-Pharmacological Interventions for Mental Disorders (R01)

National Institute of Mental Health

[RFA-MH-17-614](#)

Application Due Dates: 06/15/18 and 10/15/18

Cancer-Related Behavioral Research through Integrating Existing Data

National Cancer Institute

[PAR-16-255](#) (R21)

[PAR-16-256](#) (R01)

Application Due Dates: 06/15/18, plus additional dates through 2019

Early Stage Testing of Pharmacologic or Device-based Interventions for the Treatment of Mental Disorders

National Institute of Mental Health

[RFA-MH-17-600](#) (R61/R33)

[RFA-MH-17-602](#) (R33)

Application Due Dates: 06/15/18 and 10/15/18

Diet and Physical Activity Assessment Methodology (R21)

National Institute of Diabetes and Digestive and Kidney Diseases

National Cancer Institute

National Heart, Lung, and Blood Institute

National Institute on Alcohol Abuse and Alcoholism

National Institute of Child Health and Human Development

National Institute of Nursing Re-

search

Office of Dietary Supplements

[PAR-15-171](#)

Application Due Date: 06/16/18

NIMH Biobehavioral Research Awards for Innovative New Scientists (NIMH BRAINS)

(R01 Clinical Trial Optional)

National Institute of Mental Health

[RFA-MH-19-130](#)

Application Due Dates: 06/20/18 and 06/20/19

Standard NIH due dates for all activity codes including new submissions, renewals, and resubmissions can be found [here](#).

American Psychological Association

Psi Chi Faculty Advisor Research Grants

[APA Guidelines Here](#)

Application Due Date: 06/01/18

American Psychological Foundation

David Wechsler Early Career Grant for Innovative Work in Cognition

[APF Guidelines Here](#)

Application Due Date: 06/15/18

ASF

Angelman Syndrome Foundation – Research Proposals

[ASF Guidelines Here](#)

Application Due Date: 04/15/18

UNC

NC TraCS \$2k Award

[TraCS \\$2k Guidelines](#)

Application Due Dates: 12/19/17, plus monthly deadlines throughout 2018

TraCS Health Research Stakeholder Engagement \$2k Pilot Vouchers

[TraCS Guidelines Here](#)

Application Due Dates: 12/19/17, plus additional deadlines through 2018

NC TraCS \$5k-\$50k Grants (50% matching required)

[TraCS \\$5k-\\$50k Guidelines](#)

Application Due Date: February 2018 (Deadline TBD), plus additional deadlines through 2018



Department of Psychology and Neuroscience

235 E. Cameron Avenue

Davie Hall | CB 3270

Chapel Hill, NC 27599-3520

(919) 843-5467

[Email your submissions](#) for the next Department Newsletter!

Visit our [Department Newsletter](#)

[Archive](#) for past newsletters.



Research Opportunities for Graduate Students & Postdocs

If you are interested in applying for any of these opportunities, contact Phil Lee, Grants Management Officer, at palee@email.unc.edu.



National Institutes of Health

Ruth L. Kirschstein National Research Service Awards (NRSA)

Check guidelines for list of participating institutes

[PA-18-671](#) (F31 Predoctoral)

[PA-18-666](#) (F31D Predoctoral Diversity)

[PA-18-670](#) (F32 Postdoctoral)

Application Due Date: [Standard due dates apply](#)

NINDS Ruth L. Kirschstein National Research Service Award (NRSA) for Training of Postdoctoral Fellows (F32)

National Institute of Neurological Disorders and Stroke

[PAR-16-458](#) (F32 Postdoctoral)

Application Due Date: [Standard due dates apply](#)

NIH Pathway to Independence Award (Parent K99/R00)

Check guidelines for list of participating institutes

[PA-18-397](#) (Independent Clinical Trial Required)

[PA-18-398](#) (Independent Clinical Trial Not Allowed)

Application Due Date: [Standard due dates apply](#)

Drug Abuse Dissertation Research (R36)
National Institute on Drug Abuse

[PA-16-443](#)

Application Due Date: [Standard due dates apply](#)

Mentored Research Scientist Development Award (Parent K01)

National Heart, Lung, and Blood Institute
National Human Genome Research Insti-

tute

National Institute on Aging

National Institute on Alcohol Abuse and Alcoholism

National Institute of Biomedical Imaging and Bioengineering

National Institute of Child Health and Human Development

National Institute on Deafness and Other Communication Disorders

National Institute of Dental and Craniofacial Research

National Institute on Drug Abuse

National Institute of Mental Health

National Institute of Nursing Research

[PA-18-363](#) (Independent Clinical Trial Required)

[PA-18-369](#) (Independent Clinical Trial Not Allowed)

Application Due Date: [Standard due dates apply](#)

Mentored Quantitative Research Development Award

National Heart, Lung, and Blood Institute
National Institute on Aging

National Institute of Dental and Craniofacial Research

National Institute of Diabetes and Digestive and Kidney Diseases

National Institute on Drug Abuse

National Institute of Environmental Health Sciences

National Institute of General Medical Sciences

[PA-18-395](#) (Parent K25 - Independent Clinical Trial Required)

[PA-18-396](#) (Parent K25 - Independent Clinical Trial Not Allowed)

Application Due Date: [Standard due dates apply](#)

NINDS Advanced Postdoctoral Career Transition Award to Promote Diversity in Neuroscience Research (K22)

National Institute of Neurological Disorders and Stroke

[PAR-16-220](#)

Application Due Date: [Standard due](#)

[dates apply](#)

Mental Health Research Dissertation Grant to Enhance Workforce Diversity (R36)

National Institute of Mental Health

[PAR-15-181](#)

Application Due Date: 04/23/18

APA

APA Division 36 Student Research Award

[APA Guidelines Here](#)

Application Due Date: 06/10/18

APAGS

APAGS/Psi Chi Junior Scientist Fellowship

[APAGS Guidelines Here](#)

Application Due Date: 06/29/18

APF

APF Visionary Grants

[APF Guidelines Here](#)

Application Due Date: 04/01/18

F.J. McGuigan Dissertation Award

[APF Guidelines here](#)

Application Due Date: 06/01/18

Benton-Meier Scholarships

[APF Guidelines Here](#)

Application Due Date: 06/01/18

David Wechsler Early Career Grant for Innovative Work in Cognition

[APF Guidelines Here](#)

Application Due Date: 06/15/18

Kenneth B. and Mamie P. Clark Fund

[APF Guidelines Here](#)

Application Due Date: 06/15/18

APF Graduate Student Scholarships

[APF Guidelines Here](#)

Application Due Date: 06/30/18

