

## THIS ISSUE

News & Awards:	Page 2
Reznick Grant:	Page 2
Dept. Events:	Page 3
Research Opps:	Page 4

## IMPT DATES

Reznick Grant  
Application Deadline  
November 15

Thanksgiving Break  
November 22-24

Last Day of Class  
December 6

Final Exams  
December 8—9  
December 11—12  
December 14—15

## FOLLOW US!



# Psychology & Neuroscience Department Newsletter

Volume 7 | Issue 2

October 2017

## Department News

8 of our Psychology and Neuroscience Honors undergraduates are recipients of the 2017 David Bray Peele Award. The Peele Award honors David Bray Peele, who received his Bachelor's degree in Psychology from the Department in May 1975 and worked with Dr. Mark Waller on his Honor's Thesis. He completed his graduate work at the American University in Washington. Dr. Peele passed away suddenly in 1990. After his death, his family remembered how his Honors work at UNC Chapel Hill had opened so many opportunities for him and decided to establish a fund that would bear his name. The Peele Award supports our undergraduate students in psychology and their Honors Projects.

This year's recipients are Emmie Banks, Adrienne Bonar, Yumei Chen, Cassidy Fry, Heather Ortega, Sarah Palasick, Logan Smit, and Lynde Wangler—congratulations to all students!



Dr. Steve Buzinski, a Teaching Assistant Professor in Psychology and Neuroscience, has been named the first UNC Center for Faculty Excellence Faculty-in-Residence. The CFE has launched a new initiative, a faculty-in-residence program designed to support select faculty interests related to faculty development. As the first Faculty-in-Residence, Dr. Buzinski is working on the development and implementation of programming related to the Scholarship of Teaching and Learning (SoTL). SoTL is a systematic, evidence-based approach to improve teaching and learning. With proper planning, UNC faculty members who take steps to improve student learning can collect data to help gauge the effectiveness of the changes they are making. In addition to providing useful feedback on teaching methods, such findings are also being used as a foundation for published articles, conference presentations, and to help bolster professional vitae.



## *News, continued.*

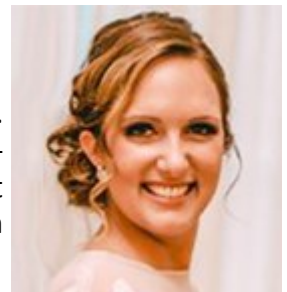
Jennifer MacCormack, a graduate student in Social Psychology, received a Ruth L. Kirschstein National Research Service Award (NRSA) Individual Predoctoral Fellowship from the National Institute on Aging. The purpose of the Kirschstein NRSA Pre-doctoral Fellowship Award is to enable promising Predoctoral students to obtain individualized, mentored research training from outstanding faculty sponsors while conducting dissertation research in scientific health-related fields. Research training is expected to enhance the individual's potential to develop into a productive, independent research scientist. Under this fellowship, Jennifer will investigate how younger vs. older adults' brains represent autonomic nervous system activity and interoception and, in turn, what these neural age differences could mean for emotional aging. Ultimately this work can offer crucial insights into aging mental health and well-being, delineating further biological pathways in the body and brain by which emotions change across the lifespan.



5 Psychology and Neuroscience graduate students are the recipients of the 2017-18 Dashiell Dissertation Startup Awards. The Dashiell Dissertation Startup Award honors John Frederick Dashiell, founder of the Department of Psychology and Neuroscience, and is intended to support scientific work by assisting with research expenses. Congratulations to Yen-Ping Chang (Social Psychology), Maleeha Haroon (Clinical Psychology), Ethan McCormick (Developmental Psychology), Kimberly Pentel (Clinical Psychology), and Lillian Reuman (Clinical Psychology)!



Chelsea Ewing joined our team as our new Clinical Psychology Program Coordinator. She earned her Bachelor's degree in Communication Studies from Longwood University. Chelsea recently moved to the area from Blacksburg, Virginia, where she worked at Virginia Tech. When she is not working, she is traveling with her husband, playing with her dog, and trying out new recipes. Welcome to Chelsea, our newest Tar Heel!



## *Reznick Grant for PSYC Majors*

The [J. Steven Reznick Diversity and Psychological Research Grant](#) is now available to undergraduate Psychology majors! Please encourage your students to apply. Fostering diversity in research is a primary goal of the Department of Psychology and Neuroscience. The Reznick Research Grant will support students from underrepresented backgrounds or those who are interested in conducting research with, or applicable to, populations traditionally underrepresented in research. This grant will be awarded to a single recipient in the amount of \$4,000 to use in the Spring 2018 semester. Funds may be used to offset the need for part-time work, to cover the costs of carrying out research, or to attend a professional conference.

[Applications should be completed online](#) and are due November 15. Students can [visit our website](#) to learn more about how to apply, frequently asked questions, and to learn more about the award.

J. STEVEN REZNICK  
DIVERSITY & PSYCHOLOGICAL  
RESEARCH GRANT  
**APPS  
DUE  
NOV 15**



## CDS Consortium Series

Each semester, the faculty and fellows of the Center for Developmental Science gather for a weekly consortium series organizes around a theme and guiding questions. The [Fall 2017 consortium series](#) will be held on Mondays from 2—3:15 PM!

### October 30

Gabriela Stein, Ph.D.  
UNC Greensboro

“Intersection of Ethnic/Racial Socialization and Adolescence”

### November 6

Michaeline Jensen, Ph.D.  
UNC Chapel Hill

“Parenting Adolescents in the Digital Age”

### November 13

Jennifer Lansford, Ph.D.  
Duke University

“Parental Warmth and Control in Diverse International Contexts”

### November 27

Tiffany Taylor Smith, Ph.D  
Cultural Learning Partners

### December 4

Laurie Chassin, Ph.D.  
Arizona State University  
“Parenting in the Context of Parental Substance Use Disorder”

## Departmental Events

### [Behavioral and Integrative Neuroscience Seminars](#)

Howell 205, 12:30—1:45 pm

- 10/31 Christina Lebonville**  
Psychology & Neuroscience  
UNC Chapel Hill
- 11/7 Travis Moschak, Ph.D.**  
Psychology & Neuroscience  
UNC Chapel Hill
- 11/21 Montserrat Navarro, Ph.D.**  
Psychology & Neuroscience  
UNC Chapel Hill

### [Clinical Lunch Series](#)

Howell 205, 12:00—1:00 pm

- 11/3 Sara Algae, Ph.D.**  
“Emotion & Interpersonal Relationships”

### [Cognitive Tea Talks](#)

Davie 347, 12:30-1:30 pm

- 10/26 Aysenil Belger, Ph.D.**  
Department of Psychiatry  
UNC Chapel Hill
- 11/2 Eva Telzer, Ph.D.**  
Psychology & Neuroscience  
UNC Chapel Hill
- 11/9 Jessica Cohen, Ph.D.**  
Psychology & Neuroscience  
UNC Chapel Hill

### [Developmental Lunch Series](#)

Howell 205, 12:15—1:15 pm

- 11/1 Ahmad Hariri, Ph.D.**  
Psychology & Neuroscience  
Duke University
- 11/8 Eva Telzer, Ph.D.**  
Psychology & Neuroscience  
UNC Chapel Hill
- 11/15 Paul Sharp**  
Psychology & Neuroscience  
UNC Chapel Hill

### [Quantitative Forums](#)

Davie 347, 12:00—1:00 pm

- 10/30 Rodolfo Galindo**  
“Institutional Review Board (IRB) Process”
- 11/6 Shankar Bhamidi, Ph.D.**  
Title TBD
- 11/13 Zachary Fisher**  
Title TBD

### [Social ORGs](#)

Davie 302, 12:00—2:30 pm

- 10/30 Yen-Ping Chang**  
Psychology & Neuroscience  
UNC Chapel Hill
- 11/6 Brendan Gaesser, Ph.D.**  
Department of Psychology  
SUNY Albany
- 11/13 David Chester, Ph.D.**  
Department of Psychology  
Virginia Commonwealth





## Research Opportunities for Faculty

If you are interested in applying for any of these opportunities, contact Phil Lee, Grants Management Officer, at [palee@email.unc.edu](mailto:palee@email.unc.edu).



### National Institutes of Health

#### *Typical and Atypical Patterns of Language & Literacy in Dual Language Learners*

National Institute on Deafness and Other Communication Disorders

Eunice Kennedy Shriver National Institute of Child Health and Human Development

[PA-18-316](#) (R01 - Clinical Trial Optional)

[PA-18-328](#) (R21 - Clinical Trial Optional)

**Application Due Date:** [Standard due dates apply](#)

#### *Fundamental Science Research on Mind and Body Approaches*

National Center for Complementary and Integrative Health

[PA-18-322](#) (R21 - Clinical Trial Optional)

[PA-18-323](#) (R01 - Clinical Trial Optional)

**Application Due Date:** [Standard due dates apply](#)

#### *New Onset Depressive Symptoms in Acute Illness*

National Institute of Nursing Research  
National Institute of Mental Health

[PA-17-487](#) (R21 Clinical Trial Not Allowed)

[PA-17-488](#) (R01 Clinical Trial Not Allowed)

**Application Due Date:** [Standard due dates apply](#)

#### *Research on the Health of Transgender and Gender Nonconforming Populations*

National Institute of Child Health and Human Development

National Cancer Institute

National Human Genome Research Institute

National Institute on Aging

National Institute on Alcohol Abuse and Alcoholism

National Institute of Allergy and Infectious

Diseases

National Institute on Deafness and Other Communication Disorders

National Institute of Dental and Craniofacial Research

National Institute of Environmental Health Sciences

National Institute of Mental Health

National Institute of Nursing Research

National Institute on Minority Health and Health Disparities

National Center for Complementary and Integrative Health

Office of AIDS Research

Office of Research on Women's Health

Division of Program Coordination, Planning and Strategic Initiatives: Sexual & Gender Minority Research Office

[PA-17-477](#) (R21)

[PA-17-478](#) (R01)

**Application Due Date:** [Standard due dates apply](#)

#### *Understanding and Modifying Temporal Dynamics of Coordinated Neural Activity*

National Institute of Mental Health

[PAR-17-463](#) (R21)

[PAR-17-466](#) (R01)

**Application Due Date:** [Standard due dates apply](#)

#### *Typical and Atypical Patterns of Language & Literacy in Dual Language Learners*

National Institute on Deafness and Other Communication Disorders

Eunice Kennedy Shriver National Institute of Child Health and Human Development

[PA-18-316](#) (R01 – Clinical Trial Optional)

[PA-18-328](#) (R21 – Clinical Trial Optional)

**Application Due Date:** [Standard due dates apply](#)

First in Human and Early Stage Clinical Trials of Novel Investigational Drugs or Devices for Psychiatric Disorders (U01)

National Institute of Mental Health

[PAR-17-327](#)

**Application Due Date:** [Standard due dates apply](#)

Cellular and Molecular Biology of Complex Brain Disorders

National Institute of Mental Health

[PAR-17-309](#) (R01)

[PAR-17-310](#) (R21)

**Application Due Date:** [Standard due dates apply](#)

#### *Understanding Processes of Recovery in the Treatment of Alcohol Use Disorder*

National Institute on Alcohol Abuse and Alcoholism

[PA-17-284](#) (R21)

[PA-17-285](#) (R01)

**Application Due Date:** [Standard due dates apply](#)

#### *Initiation of a Mental Health Family Navigator Model to Promote Early Access, Engagement and Coordination of Needed Mental Health Services for Children and Adolescents*

National Institute of Mental Health

[PAR-17-265](#) (R01)

[PAR-17-266](#) (R34)

**Application Due Date:** [Standard due dates apply](#)

[PAR-17-264](#)

**Application Due Date:** [Standard due dates apply](#)

#### *Innovative Mental Health Services Research Not Involving Clinical Trials (R01)*

National Institute of Mental Health

[PAR-17-264](#)

**Application Due Date:** [Standard due dates apply](#)

#### *NICHD Exploratory/Developmental Research Grant (R21)*

National Institute of Child Health and Human Development

[PA-17-259](#)

**Application Due Date:** [Standard due dates apply](#)

#### *From Genomic Association to Causation: A Convergent Neuroscience Approach for Integrating Levels of Analysis to Delineate Brain Function in Neuropsychiatry*

National Institute of Mental Health

[PAR-17-253](#) (R01)

[PAR-17-252](#) (Collaborative R01)



## Research Opportunities, cont.

[PAR-17-179](#) (U01)

[PAR-17-176](#) (Collaborative U01)

**Application Due Date:** [Standard due dates apply](#)

*Clinical Studies of Mental Illness Not Involving Clinical Trials (Collaborative R01)*

National Institute of Mental Health

[PAR-17-256](#)

**Application Due Date:** [Standard due dates apply](#)

*Intensive Longitudinal Analysis of Health Behaviors: Leveraging New Technologies to Understand Health Behaviors*

Office of Behavioral and Social Sciences Research

National Cancer Institute

National Institute on Alcohol Abuse and Alcoholism

National Institute of Biomedical Imaging and Bioengineering

National Institute on Drug Abuse

National Institute of Mental Health

[RFA-OD-17-004](#) (U01)

[RFA-OD-17-005](#) (U24)

**Application Due Date:** [Standard due dates apply](#)

*Marijuana, Prescription Opioid, or Prescription Benzodiazepine Drug Use Among Older Adults*

National Institute on Drug Abuse

National Institute on Aging

[PAR-17-196](#) (R01)

[PAR-17-197](#) (R21)

[PAR-17-198](#) (R03)

**Application Due Date:** [Standard due dates apply](#)

*From Genomic Association to Causation: A Convergent Neuroscience Approach for Integrating Levels of Analysis to Delineate Brain Function in Neuropsychiatry*

National Institute of Mental Health

[PAR-17-176](#) (Collaborative U01)

[PAR-17-179](#) (U01)

**Application Due Date:** [Standard due dates apply](#)

*Formative and Pilot Intervention Research for Prevention and Treatment of HIV/AIDS (R34)*

National Institute of Mental Health

[PA-17-166](#)

**Application Due Date:** [Standard due dates apply](#)

*Health Promotion Among Racial and Ethnic Minority Males*

National Institute of Nursing Research

National Institute of Diabetes and Digestive and Kidney Diseases

[PA-16-428](#) (R01)

[PA-16-432](#) (R21)

**Application Due Date:** [Standard due dates apply](#)

*Understanding Factors in Infancy and Early Childhood (Birth to 24 months) That Influence Obesity Development (R01)*

National Institute of Diabetes and Digestive and Kidney Diseases

National Institute of Child Health and Human Development

Office of Behavioral and Social Sciences Research

National Institute on Minority Health and Health Disparities

[PA-16-169](#)

**Application Due Date:** [Standard due dates apply](#)

*Methodology and Measurement in the Behavioral and Social Sciences*

Office of Behavioral and Social Sciences Research

National Cancer Institute

National Eye Institute

National Institute on Aging

National Institute on Alcohol Abuse and Alcoholism

National Institute of Deafness and Other Communication Disorders

National Institute of Neurological Disorders and Stroke

National Center for Complementary and Integrative Health

Division of Program Coordination, Planning and Strategic Initiatives, Office of

Disease Prevention

Office of Research on Women's Health

[PAR-16-260](#) (R01)

[PAR-16-261](#) (R21)

**Application Due Date:** [Standard due dates apply](#)

*Accelerating the Pace of Drug Abuse Research Using Existing Data (R01)*

National Institute on Drug Abuse

National Cancer Institute

National Institute on Alcohol Abuse and Alcoholism

[PAR-16-234](#)

**Application Due Date:** [Standard due dates apply](#)

*Prescription Drug Abuse*

National Institute on Drug Abuse

[PA-16-232](#) (R21)

[PA-16-233](#) (R01)

**Application Due Date:** [Standard due dates apply](#)

*Program for Extramural/Intramural Alcohol Research Collaborations (U01)*

National Institute on Alcohol Abuse and Alcoholism

[PAR-16-214](#)

**Application Due Date:** [Standard due dates apply](#)

*Preclinical Research on Model Organisms to Predict Treatment Outcomes for Disorders Associated with Intellectual and Developmental Disabilities (R01)*

National Institute of Child Health and Human Development

[PAR-16-215](#)

**Application Due Date:** [Standard due dates apply](#)

*Outcome Measures for Use in Treatment Trials of Individuals with Intellectual and Developmental Disabilities (R01)*

National Institute of Child Health and Human Development

[PAR-16-216](#)

**Application Due Date:** [Standard due dates apply](#)



## Research Opportunities, cont.

*NINDS Faculty Development Award to Promote Diversity in Neuroscience Research (K01)*

National Institute of Neurological Disorders and Stroke

[PAR-16-219](#)

**Application Due Date:** [Standard due dates apply](#)

*Mechanisms, Models, Measurement, & Management in Pain Research*

National Institute of Nursing Research

National Institute on Aging

National Institute of Arthritis and Musculoskeletal and Skin Diseases

National Institute on Drug Abuse

National Institute of Dental and Craniofacial Research

National Center for Complementary and Integrative Health

National Institute on Minority Health and Health Disparities

[PA-16-187](#) (R21)

[PA-16-188](#) (R01)

**Application Due Date:** [Standard due dates apply](#)

*Diet and Physical Activity Assessment Methodology (R01)*

National Institute of Diabetes and Digestive and Kidney Diseases

National Cancer Institute

National Institute on Alcohol Abuse and Alcoholism

National Center for Complementary and Integrative Health

Office of Dietary Supplements

[PA-16-167](#)

**Application Due Date:** [Standard due dates apply](#)

*Understanding Factors in Infancy and Early Childhood (Birth to 24 months) That Influence Obesity Development (R01)*

National Institute of Diabetes and Digestive and Kidney Diseases

National Institute of Child Health and Human Development

National Institute on Minority Health and

Health Disparities

Office of Behavioral and Social Sciences Research

[PA-16-169](#)

**Application Due Date:** [Standard due dates apply](#)

*The Application of Big Data Analytics to Drug Abuse Research (R01)*

National Institute on Drug Abuse

[PA-16-119](#)

**Application Due Date:** [Standard due dates apply](#)

*Physical Activity and Weight Control Interventions Among Cancer Survivors: Effects on Biomarkers of Prognosis and Survival*

National Cancer Institute

[PAR-16-122](#) (R01)

[PAR-16-123](#) (R21)

**Application Due Date:** [Standard due dates apply](#)

*Behavioral & Integrative Treatment Development Program*

National Institute on Drug Abuse

National Institute on Alcohol Abuse and Alcoholism

Office of Behavioral and Social Sciences Research

[PA-16-072](#) (R01)

[PA-16-073](#) (R34)

[PA-16-074](#) (R03)

**Application Due Date:** [Standard due dates apply](#)

*Clinical Development of Minimally-Invasive Bioassays to Support Outpatient Clinical Trials of Therapeutics for Substance Use Disorders*

National Institute on Drug Abuse

[PA-16-075](#) (R21)

[PA-16-076](#) (R01)

**Application Due Date:** [Standard due dates apply](#)

*Behavioral Science Track Award for Rapid Transition (B/Start)(R03)*

National Institute on Drug Abuse

[PAR-16-071](#)

**Application Due Date:** [Standard due dates apply](#)

*Drug Abuse Prevention Intervention Research*

National Institute on Drug Abuse

[PA-15-080](#) (R21)

[PA-15-081](#) (R03)

[PA-15-082](#) (R01)

**Application Due Date:** [Standard due dates apply](#)

*Mechanistic Studies of Pain and Alcohol Dependence*

National Institute on Alcohol Abuse and Alcoholism

National Institute on Drug Abuse

[PA-15-026](#) (R01)

**Application Due Date:** [Standard due dates apply](#)

*Epidemiology of Drug Abuse*

National Institute on Drug Abuse

[PA-15-001](#) (R21)

[PA-15-002](#) (R03)

[PA-15-003](#) (R01)

**Application Due Date:** [Standard due dates apply](#)

*Biobehavioral and Technological Interventions to Attenuate Cognitive Decline in Individuals with Cognitive Impairment or Dementia*

National Institute of Nursing Research

National Institute on Aging

[PA-15-015](#) (R21)

[PA-15-016](#) (R15)

[PA-15-017](#) (R01)

**Application Due Date:** [Standard due dates apply](#)

*Women & Sex/Gender Differences in Drug and Alcohol Abuse/Dependence*

National Institute on Drug Abuse

National Institute on Alcohol Abuse and Alcoholism

[PA-14-036](#) (R21)

[PA-14-037](#) (R03)

[PA-14-038](#) (R01)

**Application Due Date:** [Standard due](#)





## Research Opportunities, cont.

[dates apply](#)

*Effects of Cannabis Use and Cannabinoids on the Developing Brain*

National Institute on Drug Abuse

[PA-14-163](#) (R01)

[PA-14-162](#) (R21)

[PA-14-164](#) (R03)

**Application Due Date:** [Standard due](#)

[dates apply](#)

*Clinical Studies of Mental Illness Not Involving Treatment Development, Efficacy, or Effectiveness Trials* National Institute of Mental Health

[PAR-17-256](#) (Collaborative R01)

**Application Due Date:** [Standard due](#)

[dates apply](#)

*Lab to Marketplace: Tools for Brain and Behavioral Research*

National Institute of Mental Health

National Institute of Deafness and Other Communication Disorders

[PA-14-250](#) (R43/R44)

**Application Due Date:** [Standard due](#)

[dates apply](#)

*Advancing Interventions to Improve Medication Adherence*

Office of Behavioral and Social Sciences Research

National Eye Institute

National Heart, Lung, and Blood Institute

National Institute on Alcohol Abuse and Alcoholism

National Institute on Deafness and Other Communication Disorders

National Institute of Mental Health

National Institute of Nursing Research

National Institute on Drug Abuse

National Cancer Institute

[PA-14-335](#) (R21)

**Application Due Date:** [Standard due](#)

[dates apply](#)

*BRAIN Initiative: Development, Optimization, and Validation of Novel Tools and Technologies for Neuroscience Research*

National Institute of Mental Health

National Institute of Aging

National Institute on Alcohol Abuse and Alcoholism

National Institute on Drug Abuse

National Institute of Neurological Disorders and Stroke

National Institute on Deafness and Other Communication Disorders

[PAR-15-090](#) (STTR) (R41/R42)

[PAR-15-091](#) (SBIR) (R43/R44)

**Application Due Date:** [Standard due](#)

[dates apply](#)

*Functional Wellness in HIV: Maximizing the Treatment Cascade*

National Institute of Nursing Research

Office of Behavioral and Social Sciences Research

[PA-15-133](#) (R01)

[PA-15-134](#) (R21)

**Application Due Date:** [Standard due](#)

[dates apply](#)

*Systems Science and Health in the Behavioral and Social Sciences*

Office of Behavioral and Social Sciences Research

National Cancer Institute

National Institute on Aging

National Institute on Alcohol Abuse and Alcoholism

National Institute of Biomedical Imaging and Bioengineering

Eunice Kennedy Shriver National Institute of Child Health and Human Development

National Institute of Dental and Craniofacial Research

National Institute of Environmental Health Sciences

National Institute of Mental Health

National Institute of Nursing Research

Office of Disease Prevention

National Institute of General Medical Sciences

[PAR-15-047](#) (R21)

[PAR-15-048](#) (R01)

**Application Due Date:** [Standard due](#)

[dates apply](#)

*International Research Collaboration on*

*Drug Abuse and Addiction Research*

National Institute on Drug Abuse

[PA-15-141](#) (R03)

[PA-15-142](#) (R01)

[PA-15-143](#) (R21)

**Application Due Date:** [Standard due](#)

[dates apply](#)

*Pilot and Feasibility Studies in Preparation for Drug and Alcohol Abuse Prevention Trials* (R34)

National Institute on Drug Abuse

National Institute on Alcohol Abuse and Alcoholism

[PA-15-177](#)

**Application Due Date:** [Standard due](#)

[dates apply](#)

*Screening and Brief Alcohol Interventions in Underage and Young Adult Populations*

National Institute on Alcohol Abuse and Alcoholism

[PA-15-294](#) (R21)

[PA-15-295](#) (R01)

[PA-15-296](#) (R03)

**Application Due Date:** [Standard due](#)

[dates apply](#)

*Alcohol Use Disorders: Behavioral Treatment, Services and Recovery Research*

National Institute on Alcohol Abuse and Alcoholism

[PA-15-299](#) (R01)

[PA-15-300](#) (R03)

[PA-15-301](#) (R21)

**Application Due Date:** [Standard due](#)

[dates apply](#)

*Research on the Mechanisms and/or Behavioral Outcomes of Multisensory Processing* (R01)

National Institute on Aging

National Center for Complementary and Integrative Health

National Cancer Institute

National Eye Institute

National Institute of Child Health and Human Development

National Institute on Drug Abuse

National Institute on Deafness and Other



## Research Opportunities, cont.

Communication Disorders  
National Institute of Dental and Craniofacial Research  
National Institute of Neurological Disorders and Stroke  
Office of Behavioral and Social Sciences Research  
Office of Research on Women's Health  
[PA-15-347](#)

**Application Due Date:** [Standard due dates apply](#)

*Major Opportunities for Research in Epidemiology of Alzheimer's Disease and Cognitive Resilience (R01)*

National Institute on Aging  
[PAR-15-356](#)

**Application Due Date:** [Standard due dates apply](#)

*Research Career Enhancement Award to Advance Therapy Development for Alzheimer's (K18)*

National Institute on Aging  
[PAR-17-052](#)

**Application Due Date:** [Standard due dates apply](#)

*Leveraging Existing Cohort Studies to Clarify Risk and Protective Factors for Alzheimer's Disease and Related Dementias (R01)*

National Institute on Aging  
[PAR-17-054](#)

**Application Due Date:** [Standard due dates apply](#)

*Reductions in Illicit Drug Use and Functional Outcomes (R21/R33)*

National Institute on Drug Abuse  
[PA-15-099](#)

**Application Due Date:** [Standard due dates apply](#)

**(Letter of Intent required)**

*Target Assessment, Engagement and Data Replicability to Improve Substance Use Disorders Treatment Outcomes*

National Institute on Drug Abuse  
National Cancer Institute  
National Institute on Alcohol Abuse and

Alcoholism

[PAR-16-352](#) (R33)

[PAR-16-353](#) (R21/R33)

**Application Due Date:** [Standard due dates apply](#)

*Research on Autism Spectrum Disorders*

National Institute of Mental Health

National Institute of Child Health and Human Development

National Institute on Deafness and Other Communication Disorders

National Institute of Environmental Health Sciences

National Institute of Neurological Disorders and Stroke

[PA-16-386](#) (R21)

[PA-16-387](#) (R03)

[PA-16-388](#) (R01)

**Application Due Date:** [Standard due dates apply](#)

*Mentored Quantitative Research Development Award (Parent K25)*

National Heart, Lung, and Blood Institute

National Institute on Aging

National Institute on Alcohol Abuse and Alcoholism

National Institute of Allergy and Infectious Diseases

National Institute of Arthritis and Musculoskeletal and Skin Diseases

National Institute of Biomedical Imaging and Bioengineering

Eunice Kennedy Shriver National Institute of Child Health and Human Development

National Institute on Deafness and Other Communication Disorders

National Institute of Dental and Craniofacial Research

National Institute of Diabetes and Digestive and Kidney Diseases

National Institute on Drug Abuse

National Institute of Environmental Health Sciences

National Institute of General Medical Sciences

[PA-16-194](#)

**Application Due Date:** [Standard due dates apply](#)

*Mentored Research Scientist Development Award (Parent K01)*

National Heart, Lung, and Blood Institute

National Human Genome Research Institute

National Institute on Aging

National Institute on Alcohol Abuse and Alcoholism

National Institute of Allergy and Infectious Diseases

National Institute of Arthritis and Musculoskeletal and Skin Diseases

National Institute of Biomedical Imaging and Bioengineering

National Institute of Child Health and Human Development

National Institute on Deafness and Other Communication Disorders

National Institute of Dental and Craniofacial Research

National Institute on Drug Abuse

National Institute of Mental Health

National Institute of Nursing Research

National Center for Complementary and Integrative Health

[PA-16-190](#)

**Application Due Date:** [Standard due dates apply](#)

*Development and/or Validation of Devices or Electronic Systems to Monitor or Enhance Mind and Body Interventions*

National Center for Complementary and Integrative Health

[PAS-17-022](#) (R43/R44)

[PAS-17-023](#) (R41/R42)

**Application Due Date:** [Standard due dates apply](#)

*Common Mechanisms and Interactions Among Neurodegenerative Diseases (R01)*

National Institute on Aging

National Institute of Neurological Disorders and Stroke

[PAS-17-028](#)

**Application Due Date:** [Standard due dates apply](#)

*Tools for Clinical Care and Management of Alzheimer's Disease (AD) and Its Comorbidities*





## Research Opportunities, cont.

National Institute on Aging

[PAR-17-066](#) (R41/R42)

[PAR-17-067](#) (R43/R44)

**Application Due Date:** [Standard due dates apply](#)

*Advancing Research on Alzheimer's Disease (AD) and Alzheimer's-Disease-Related Dementias (ADRD)*

National Institute on Aging

[PAS-17-064](#)

[PAS-17-065](#)

**Application Due Date:** [Standard due dates apply](#)

*Neuroscience Research on Drug Abuse*

National Institute on Drug Abuse

[PA-17-111](#) (R01)

[PA-17-112](#) (R21)

**Application Due Date:** [Standard due dates apply](#)

*Chronic Condition Self-Management in Children and Adolescents*

National Institute of Nursing Research

[PA-17-115](#) (R01)

[PA-17-116](#) (R21)

**Application Due Date:** [Standard due dates apply](#)

*Basic Mechanisms of Brain Development Mediating Substance Use and Dependence* (R01)

National Institute on Drug Abuse

National Institute on Alcohol Abuse and Alcoholism

[PA-17-119](#)

**Application Due Date:** [Standard due dates apply](#)

*Perception and Cognition Research to Inform Cancer Image Interpretation*

National Cancer Institute

National Institute of Biomedical Imaging and Bioengineering

[PAR-17-124](#) (R21)

[PAR-17-125](#) (R01)

**Application Due Date:** [Standard due dates apply](#)

*Public Policy Effects on Alcohol-, Marijuana-*

*and Other Substance-Related Behaviors and Outcomes*

National Institute on Alcohol Abuse and Alcoholism

[PA-17-132](#) (R21)

[PA-17-134](#) (R03)

[PA-17-135](#) (R01)

**Application Due Date:** [Standard due dates apply](#)

*Innovations in Mechanisms and Interventions to Address Mental Health in HIV Prevention and Care Continuum*

National Institute of Mental Health

National Institute on Drug Abuse

[PA-17-136](#) (R01)

[PA-17-137](#) (R21)

**Application Due Date:** [Standard due dates apply](#)

*Advancing our Understanding of the Brain Epitranscriptomics*

National Institute of Mental Health

National Institute on Drug Abuse

[PAR-17-152](#) (R21)

[PAR-17-153](#) (R01)

**Application Due Date:** [Standard due dates apply](#)

*Functional Genetics, Epigenetics, and Non-coding RNAs in Substance Use Disorders*

National Institute on Drug Abuse

[PA-17-155](#) (R01)

[PA-17-157](#) (R21)

**Application Due Date:** [Standard due dates apply](#)

*Innovations in HIV Testing, Adherence, and Retention to Optimize HIV Care Continuum Outcomes*

National Institute of Mental Health

[PA-17-181](#) (R21)

[PA-17-182](#) (R01)

**Application Due Date:** [Standard AIDS due dates apply](#)

*AIDS-Science Track Award for Research Transition* (R03)

National Institute on Drug Abuse

[PA-15-290](#)

**Application Due Date:** [Standard AIDS due](#)

[dates apply](#)

*HIV/AIDS High Priority Drug Abuse Research* (R01)

National Institute on Drug Abuse

[PAS-16-018](#)

**Application Due Date:** [Standard AIDS due dates apply](#)

*Targeted basic behavioral and social science and intervention development for HIV prevention and care*

National Institute of Mental Health

[PA-17-105](#) (R21)

[PA-17-106](#) (R01)

**Application Due Date:** [Standard AIDS due dates apply](#)

*Targeted Implementation Science to Achieve 90/90/90 Goals for HIV/AIDS Prevention and Treatment*

National Institute of Mental Health

[PA-17-194](#) (R01)

[PA-17-195](#) (R21)

**Application Due Date:** [Standard AIDS due dates apply](#)

*Science of Behavior Change: Revision Applications for Use-inspired Research to Optimize Adherence, Behavior Change Interventions, and Outcomes*

National Institutes of Health

[RFA-RM-17-022](#) (R01)

[RFA-RM-17-023](#) (U01)

[RFA-RM-17-024](#) (R34)

[RFA-RM-17-028](#) (R21)

**Application Due Date:** 12/05/17

*Investigator Initiated Extended Clinical Trial* (R01)

National Institute of Allergy and Infectious Diseases

National Institute on Aging

National Institute of General Medical Sciences

[PAR-17-056](#)

**Application Due Date:** 12/07/17, plus additional deadlines through 2019

*NIH Blueprint for Neuroscience Research: Dynamic Neuroimmune Interactions in the*



## Research Opportunities, cont.

*Transition from Normal CNS Function to Disorders (R01)*

NIH Blueprint for Neuroscience Research

(<https://neuroscienceblueprint.nih.gov/>)

National Institute on Alcohol Abuse and Alcoholism

National Eye Institute

National Institute on Aging

National Institute of Biomedical Imaging and Bioengineering

Eunice Kennedy Shriver National Institute of Child Health and Human Development

National Institute of Dental and Craniofacial Research

National Institute on Drug Abuse

National Institute of Environmental Health Sciences

National Institute of Mental Health

National Institute of Neurological Disorders and Stroke

National Institute of Nursing Research

National Center for Complementary and Integrative Health

National Center for Advancing Translational Sciences

[RFA-AA-18-007](#)

Application Due Date: 12/07/17

*BRAIN Initiative: Targeted BRAIN Circuits Projects- TargetedBCP (R01 - Clinical Trial Not Allowed)*

National Institute of Neurological Disorders and Stroke

National Eye Institute

National Institute on Aging

National Institute on Alcohol Abuse and Alcoholism

National Institute of Biomedical Imaging and Bioengineering

National Institute of Child Health and Human Development

National Institute on Deafness and Other Communication Disorders

National Institute on Drug Abuse

National Institute of Mental Health

National Center for Complementary and Integrative Health

Office of Behavioral and Social Sciences Research

Office of Research on Women's Health

[RFA-NS-18-009](#)

Application Due Dates: 12/08/17 and 03/15/18

*BRAIN Initiative: Exploratory Team-Research BRAIN Circuit Programs - eTeamBCP (U01)*

National Institute of Neurological Disorders and Stroke

National Center for Complementary and Integrative Health

National Eye Institute

National Institute on Aging

National Institute on Alcohol Abuse and Alcoholism

National Institute of Biomedical Imaging and Bioengineering

Eunice Kennedy Shriver National Institute of Child Health and Human Development

National Institute on Drug Abuse

National Institute on Deafness and Other Communication Disorders

National Institute of Mental Health

Office of Behavioral and Social Science Research

Office of Research on Women's Health

[RFA-NS-18-008](#)

Application Due Date: 12/15/17

*BRAIN Initiative: Theories, Models and Methods for Analysis of Complex Data from the Brain (R01 - Clinical Trial Not Allowed)*

National Institute of Biomedical Imaging and Bioengineering

National Center for Complementary and Integrative Health

National Eye Institute

National Institute on Aging

National Institute on Alcohol Abuse and Alcoholism

National Institute of Child Health and Human Development

National Institute on Drug Abuse

National Institute on Deafness and Other Communication Disorders

National Institute of Mental Health

National Institute of Neurological Disorders and Stroke

[RFA-EB-17-005](#)

**Application Due Dates: 12/15/17, plus additional deadlines through 2019**

*BRAIN Initiative: Proof of Concept Development of Early Stage Next Generation Human Brain Imaging (R01 Clinical Trials Not Allowed)*

National Institute of Biomedical Imaging and Bioengineering

National Center for Complementary and Integrative Health

National Eye Institute

National Institute on Aging

National Institute on Alcohol Abuse and Alcoholism

National Institute of Child Health and Human Development

National Institute on Drug Abuse

National Institute on Deafness and Other Communication Disorders

National Institute of Mental Health

National Institute of Neurological Disorders and Stroke

[RFA-EB-17-003](#)

**Application Due Dates: 12/20/17 and 12/11/18**

*BRAIN Initiative: Development of Next Generation Human Brain Imaging Tools and Technologies (U01 Clinical Trials Not Allowed)*

National Institute of Biomedical Imaging and Bioengineering

National Center for Complementary and Integrative Health

National Eye Institute

National Institute on Aging

National Institute on Alcohol Abuse and Alcoholism

National Institute of Child Health and Human Development

National Institute on Drug Abuse

National Institute on Deafness and Other Communication Disorders

National Institute of Mental Health

National Institute of Neurological Disorders and Stroke

[RFA-EB-17-004](#)

**Application Due Dates: 12/20/17 and 12/11/18**



## Research Opportunities, cont.

*BRAIN Initiative: Exploratory Research Opportunities Using Invasive Neural Recording and Stimulating Technologies in the Human Brain (U01)*

National Institute of Neurological Disorders and Stroke

National Eye Institute

National Institute on Aging

National Institute on Alcohol Abuse and Alcoholism

National Institute of Biomedical Imaging and Bioengineering

Eunice Kennedy Shriver National Institute of Child Health and Human Development

National Institute on Deafness and Other Communication Disorders

National Institute on Drug Abuse

National Institute of Mental Health

National Center for Complementary and Integrative Health

Office of Behavioral and Social Sciences Research

Office of Research on Women's Health

[RFA-NS-18-010](#)

Application Due Date: 01/19/18

*Innovative Programs to Enhance Research Training (IPERT) (R25)*

National Institute of General Medical Sciences

[PAR-17-070](#)

Application Due Dates: 01/23/18 and 01/23/19

*Phased Innovation Award for Mechanistic Studies to Optimize Mind and Body Interventions in NCCIH High Priority Research Topics (R61/R33)*

National Center for Complementary and Integrative Health

[PAR-17-149](#)

Application Due Dates: 02/01/18, plus additional deadlines through 2019

*Innovation Award for Mechanistic Studies to Optimize Mind and Body Interventions in NCCIH High Priority Research Topics (R33)*

National Center for Complementary and

Integrative Health

[PAR-17-162](#)

Application Due Dates: 02/01/18, plus additional deadlines through 2019

*BRAIN Initiative: Tools to target, identify and characterize non-neuronal cells in the brain (R01 - Clinical Trial Not Allowed)*

National Institute on Drug Abuse

National Eye Institute

National Institute on Aging

National Institute on Alcohol Abuse and Alcoholism

National Institute of Biomedical Imaging and Bioengineering

Eunice Kennedy Shriver National Institute of Child Health and Human Development

National Institute on Deafness and Other Communication Disorders

National Institute of Mental Health

National Institute of Neurological Disorders and Stroke

National Center for Complementary and Integrative Health

[RFA-DA-18-018](#)

Application Due Dates: 02/01/18 and 10/04/18

*NCCIH Mind and Body Clinical Trial Cooperative Agreement (U01)*

National Center for Complementary and Integrative Health

[PAR-17-215](#)

Application Due Dates: 02/02/18, plus additional deadlines through 2020

*BRAIN Initiative: Research Resource Grants for Technology Integration and Dissemination (U24 - Clinical Trial Not Allowed)*

National Institute of Neurological Disorders and Stroke

National Eye Institute

National Institute on Aging

National Institute on Alcohol Abuse and Alcoholism

National Institute of Biomedical Imaging and Bioengineering

Eunice Kennedy Shriver National Institute of Child Health and Human Development

National Institute on Deafness and Other

Communication Disorders

National Institute on Drug Abuse

National Institute of Mental Health

National Center for Complementary and Integrative Health

[RFA-NS-18-005](#)

Application Due Date: 02/09/18

*High Impact Neuroscience Research Resource Grants (R24 - Clinical Trial Not Allowed)*

National Institute of Neurological Disorders and Stroke

[RFA-NS-18-006](#)

Application Due Date: 02/09/18

*Pilot Effectiveness Trials for Treatment, Preventive and Services Interventions (R34)*

National Institute of Mental Health

[RFA-MH-17-612](#)

Application Due Dates: 02/14/18, plus additional deadlines through 2018

*Development of Psychosocial Therapeutic and Preventive Interventions for Mental Disorders*

National Institute of Mental Health

[RFA-MH-17-604](#) (R61/R33)

[RFA-MH-17-606](#) (R33)

Application Due Dates: 02/14/18, plus additional deadlines through 2018

*Clinical Trials to Test the Effectiveness of Treatment, Preventive, and Services Interventions*

National Institute of Mental Health

[RFA-MH-17-608](#) (R01)

[RFA-MH-17-610](#) (Collaborative R01)

Application Due Dates: 02/14/18, plus additional deadlines through 2018

*Pilot Effectiveness Trials for Treatment, Preventive and Services Interventions (R34)*

National Institute of Mental Health

[RFA-MH-17-612](#)

Application Due Dates: 02/14/18, plus additional deadlines through 2018





## Research Opportunities, cont.

### Confirmatory Efficacy Clinical Trials of Non-Pharmacological Interventions for Mental Disorders (R01)

National Institute of Mental Health  
[RFA-MH-17-614](#)

Application Due Dates: 02/14/18, plus additional deadlines through 2018

### Cancer-Related Behavioral Research through Integrating Existing Data National Cancer Institute

[PAR-16-255](#) (R21)  
[PAR-16-256](#) (R01)

Application Due Dates: 02/15/18, plus additional dates through 2019

### Early Stage Testing of Pharmacologic or Device-based Interventions for the Treatment of Mental Disorders

National Institute of Mental Health  
[RFA-MH-17-600](#) (R61/R33)  
[RFA-MH-17-602](#) (R33)

Application Due Dates: 02/15/18, plus additional deadlines through 2018

### Developing Interventions for Health-Enhancing Physical Activity

Division of Program Coordination, Planning and Strategic Initiatives, Office of Disease Prevention  
National Cancer Institute  
National Institute on Aging  
National Institute on Alcohol Abuse and Alcoholism  
National Institute on Drug Abuse  
National Center for Complementary and Integrative Health  
[PAR-18-307](#) (R21/R33 - Clinical Trial Op-

ational)  
[PAR-18-308](#) (R01 – Clinical Trial Optional)  
Application Due Dates: 02/16/18 (R21/R33) and 02/05/18 (R01), plus additional deadlines through 2020

Standard NIH due dates for all activity codes including new submissions, renewals, and resubmissions can be found [here](#).

### American Foundation For Suicide Prevention

American Foundation for Suicide Prevention Innovation Grants  
[AFSP Guidelines Here](#)  
Application Due Date: 11/15/17

American Foundation for Suicide Prevention Focus Grants  
[AFSP Guidelines Here](#)  
Application Due Date: 12/07/17

### American Psychological Foundation

Henry P. David Grants for Research And International Travel in Human Reproductive Behavior and Population Studies  
[APF Guidelines Here](#)  
Application Due Date: 02/01/18

Pearson Early Career Grant  
[APF Guidelines Here](#)  
Application Due Date: 02/01/18

### CESF

Caplan Early Childhood Foundation  
<http://earlychildhoodfoundation.org/>  
App Due Date: 01/31/18

### Russell Sage Foundation

Social Inequality (plus additional programs)  
Russell Sage Foundation  
[Funding Opportunity Information](#)  
Letter of Inquiry Due Date: 11/30/17  
Application Due Date: 03/05/18

### UNC

NC TraCS \$2k Award  
[TraCS \\$2k Guidelines](#)  
Application Due Dates: 11/21/17, plus monthly deadlines throughout 2018

TraCS Health Research Stakeholder Engagement \$2k Pilot Vouchers  
[TraCS Guidelines Here](#)  
Application Due Dates: 11/21/17, plus additional deadlines through 2018

NC TraCS \$5k-\$50k Grants (50% matching required)  
[TraCS \\$5k-\\$50k Guidelines](#)  
Application Due Date: February 2018 (Deadline TBD), plus additional deadlines through 2018



## Research Opportunities for Graduate Students & Postdocs

If you are interested in applying for any of these opportunities, contact Phil Lee, Grants Management Officer, at [palee@email.unc.edu](mailto:palee@email.unc.edu).



### National Institutes of Health

Ruth L. Kirschstein National Research Service Awards (NRSA)  
Check guidelines for list of participating institutes  
[PA-16-309](#) (F31 Predoctoral)

[PA-16-308](#) (F31D Predoctoral Diversity)  
[PA-16-307](#) (F32 Postdoctoral)  
Application Due Date: [Standard due dates apply](#)

NINDS Ruth L. Kirschstein National Research Service Award (NRSA) for Training



## Research Opportunities, cont.

### *of Postdoctoral Fellows (F32)*

National Institute of Neurological Disorders and Stroke

[PAR-16-458](#) (F32 Postdoctoral)

**Application Due Date:** [Standard due dates apply](#)

### *NIH Pathway to Independence Award (K99/R00)*

Check guidelines for list of participating institutes

[PA-16-193](#)

**Application Due Date:** [Standard due dates apply](#)

### *Drug Abuse Dissertation Research (R36)*

National Institute on Drug Abuse

[PA-16-443](#)

**Application Due Date:** [Standard due dates apply](#)

### *Mentored Research Scientist Development Award (Parent K01)*

National Heart, Lung, and Blood Institute  
National Human Genome Research Institute

National Institute on Aging

National Institute on Alcohol Abuse and Alcoholism

National Institute of Allergy and Infectious

National Institute of Nursing Research

National Center for Complementary and Integrative Health

[PA-16-190](#)

**Application Due Date:** [Standard due dates apply](#)

### *Mentored Quantitative Research Development Award (Parent K25)*

National Heart, Lung, and Blood Institute

National Institute on Aging

National Institute on Alcohol Abuse and Alcoholism

National Institute of Allergy and Infectious Diseases

National Institute of Arthritis and Musculoskeletal and Skin Diseases

National Institute of Biomedical Imaging and Bioengineering

Eunice Kennedy Shriver National Institute

of Child Health and Human Development

National Institute on Deafness and Other Communication Disorders

National Institute of Dental and Craniofacial Research

National Institute of Diabetes and Digestive and Kidney Diseases

National Institute on Drug Abuse

National Institute of Environmental Health Sciences

National Institute of General Medical Sciences

[PA-16-194](#)

**Application Due Date:** [Standard due dates apply](#)

### *NINDS Advanced Postdoctoral Career*

*Transition Award to Promote Diversity in Neuroscience Research (K22)*

National Institute of Neurological Disorders and Stroke

[PAR-16-220](#)

**Application Due Date:** [Standard due dates apply](#)

### *NIH Blueprint Diversity Specialized Pre-*

*doctoral to Postdoctoral Advancement in Neuroscience (D-SPAN) Award (F99/K00)*

National Institute of Neurological Disorders and Stroke

NIH Blueprint for Neuroscience Research

National Institute of Mental Health

National Institute of Nursing Research

Office of Behavioral and Social Science Research

[RFA-NS-18-007](#)

**Application Due Date:** 12/13/17

### *Mental Health Research Dissertation*

*Grant to Enhance Workforce Diversity (R36)*

National Institute of Mental Health

[PAR-15-181](#)

**Application Due Date:** 12/22/17, plus additional deadlines through 2018

## APA

*APA Predoctoral Fellowship in Mental Health and Substance Abuse Services Pro-*

*gram*

[APA Guidelines Here](#)

**Application Due Date:** 01/15/18

*APA Postdoctoral Fellowship in Mental Health and Substance Abuse Services Program*

[APA Guidelines Here](#)

**Application Due Date:** 01/15/18

## APF

*Elizabeth Munsterberg Koppitz Child Psychology Graduate Student Fellowship*

[APF Guidelines Here](#)

**Application Due Date:** 11/15/17

*Student & Postdoctoral Travel Awards*

*(Division of Adult Development and Aging)*

[APF Guidelines Here](#)

**Application Due Date:** 11/15/17

*Henry P. David Grants for Research and International Travel in Human Reproductive Behavior and Population Studies*

[APF Guidelines Here](#)

**Application Due Date:** 02/01/18

*Pearson Early Career Grant*

[APF Guidelines Here](#)

**Application Due Date:** 02/01/18

*Randy Gerson Memorial Grant*

[APF Guidelines Here](#)

**Application Due Date:** 02/01/16

## Ford Foundation

*Ford Foundation Predoctoral Fellowship for Minorities*

[Ford Foundation Guidelines Here](#)

**Application Due Date:** 12/14/17

