

## THIS ISSUE

New Staff:	Page 2
Dept. News:	Page 2
Winter Break:	Page 3
Dept. Events:	Page 3
Research Opps:	Page 4

## IMPT DATES

Last Day of Class  
December 7

Reading Days  
December 8  
December 14

Exam Days  
December 9—13  
December 15—16

Winter Commencement  
Sunday, December 18  
2 PM @ Smith Center

## FOLLOW US!



# Psychology & Neuroscience Department Newsletter

Volume 6 | Issue 4

December 2016

## Department News

Adam Hoffman, Developmental graduate student, and Margaret Anton, a Clinical graduate student, are the 2016-17 Diversity in Research award winners!

Adam won the Ernest C. Davenport Award for his work with Dr. Beth Kurtz-Costes. Adam's research focuses on several groups that are under-represented in research literature: African Americans, French adolescents of North African origin, and American Indians. In addition to exploring racial-ethnic identity in these groups, he has examined the interface between gender and racial-ethnic identity. Adam is also highly deserving of this award because of the multitude of ways in which he has worked for justice and the well-being of under-represented groups, including ensuring that UNC is welcoming of our LGBT students. Adam is also involved in the First Nations Circle at UNC and has played a major role this year in organizing events to celebrate Native American Heritage Month.

Margaret won the Bernadette Gray-Little Award for her work with Dr. Deborah Jones. Margaret has designed, implemented, and disseminated an evidence-based behavioral therapy program specifically tailored to enhance mental health in children from families at the poverty line. Her work has already decreased symptoms of aggression and depression in over 60 families and will eventually reach over 100. Additionally, she has disseminated and published these findings in several top-tier psychology journals, reaching thousands of clinicians and researchers nationwide. Her ground-breaking work investigating how therapy for low SES families can be enhanced by technology has led leaders in the field to seek her out as a collaborator. Congratulations to Margaret and Adam!





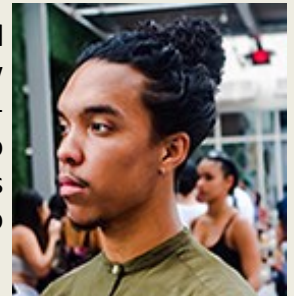
## *Welcome New Staff!*



Demond Medlin joined our team as our new Human Resources Manager. He has spent the majority of his professional career in higher education, serving in both student services and administrative management roles. Most recently, Demond was the Executive Assistant in the Department of Social Work at NC State University. He's a former member of the wolf pack, but he is no stranger to UNC, previously serving as a Student Services Manager for the Department of Health Behavior in the School of Global Public Health. Demond has a passion for all things HR and is excited about his new role. Demond lives in Raleigh with his husband, Judson, and their two miniature schnauzers. Outside of work, he enjoys spending time with his husband, traveling, and shopping.

Welcome to Demond, our newest Tar Heel!

Tre Rush is now our Facilities Manager—a new position in the Department. Tre moved to Carrboro in February 2016 from Charlotte to continue his education and to get a new change of scenery. Previously, Tre had worked with a commercial property development company and studied construction management at Central Piedmont. He loves to sketch in his spare time and design graphics in Illustrator. One of Tre's new hobbies is web development and coding. Tre also enjoys cooking and traveling. Congratulations to Tre on his new position—we're glad you joined us as a permanent staff member!



## *News, Continued*

Christina Lebonville, a graduate student in Behavioral and Integrative Neuroscience, is a Spring 2017 Future Faculty Fellow. The Future Faculty Fellowship Program (FFFP) is a UNC Center for Faculty Excellence graduate student initiative. FFFP is a semester-long program that introduces graduate students to evidence-based teaching practices, helps them understand the roles and responsibilities of faculty members at different types of institutions of higher education, and helps them reflect on their professional goals. As part of the FFFP, each fellow is expected to attend Center for Faculty Excellence workshops on teaching and learning, participate in a graduate student learning community, submit a teaching statement, complete an exercise on faculty roles and responsibilities in different types of universities and colleges, and deliver a final presentation. Congratulations, Christina!



Veronica Cole, a graduate student in Quantitative Psychology, is the recipient of the 2016 Lyle V. Jones Award. The Lyle V. Jones Award is presented annually to a graduate student of the L.L. Thurstone Psychometric Laboratory who epitomizes both academic excellence and community engagement within the lab. Veronica received the Jones Award on November 21, 2016—congratulations!



Congratulations to 5 of our Psychology and Neuroscience faculty members who are our 2016-17 recipients of the Stephenson and Lindquist Awards. The Stephenson and Lindquist Award is a departmental award and its purpose is to support the research activities of our faculty. This year's recipients are Drs. Sylvia Fitting, Kelly Giovanello, Peter Gordon, Mark Hollins, and Keith Payne!



## Winter Break Closings

The University is closed for a one-week period for Winter Break 2016: Monday, December 26 through Friday, December 30th. During this period, four days are designated as paid holidays. One day, Thursday, December 29, is not covered as a state-provided holiday and therefore has been designated as a University Closed Day on which employees must use leave (employees may use vacation leave, bonus leave, or accrued compensatory time to cover this closed day).

The University will also be closed for the New Year's Day Holiday on Monday, January 2, 2017.

[Holiday schedules are available online](#) and questions may be directed to the Office of Human Resources at (919) 962-3071 or [benefits@unc.edu](mailto:benefits@unc.edu).

Happy Holidays!



## Departmental Events

### [Behavioral and Integrative Neuroscience Seminars](#)

Howell 205, 12:15—1:45 pm

**12/6 Seth Hurley, Ph.D.**  
Psychology & Neuroscience  
UNC Chapel Hill

### [Clinical Lunch Series](#)

Davie 261, 12:00—1:00 pm

**12/2 Mitch Prinstein, Ph.D.**  
“Conversations with Mitch”

### [Cognitive Tea Talks](#)

Davie 347, 12:30-1:30 pm

**12/1 Simon Davis, Ph.D.**  
Department of Neurology  
Duke University

### [Developmental Lunch Series](#)

Howell 205, 12:20—1:30 pm

### [Quantitative Forums](#)

Davie 347, 12:00—1:00 pm

**12/5 Zachary Fisher**  
Psychology & Neuroscience  
UNC Chapel Hill

### [Social ORGs](#)

Davie 302, 12:00—2:30 pm

**12/5 Jonah Berger, Ph.D.**  
Wharton Business School  
Univ. of Pennsylvania





## Research Opportunities for Faculty

If you are interested in applying for any of these opportunities, contact Phil Lee, Grants Management Officer, at [palee@email.unc.edu](mailto:palee@email.unc.edu).



### National Institutes of Health

#### Health Promotion Among Racial and Ethnic Minority Males

National Institute of Nursing Research

National Institute of Diabetes and Digestive and Kidney Diseases

[PA-16-428](#) (R01)

[PA-16-432](#) (R21)

**Application Due Date:** [Standard due dates apply](#)

#### Understanding Factors in Infancy and Early Childhood (Birth to 24 months) That Influence Obesity Development (R01)

National Institute of Diabetes and Digestive and Kidney Diseases

National Institute of Child Health and Human Development

Office of Behavioral and Social Sciences Research

National Institute on Minority Health and Health Disparities

[PA-16-169](#)

**Application Due Date:** [Standard due dates apply](#)

#### Methodology and Measurement in the Behavioral and Social Sciences

Office of Behavioral and Social Sciences Research

National Cancer Institute

National Eye Institute

National Institute on Aging

National Institute on Alcohol Abuse and Alcoholism

National Institute of Deafness and Other Communication Disorders

National Institute of Neurological Disorders and Stroke

National Center for Complementary and Integrative Health

Division of Program Coordination, Planning and Strategic Initiatives, Office of Disease Prevention

Office of Research on Women's Health

[PAR-16-260](#) (R01)

[PAR-16-261](#) (R21)

**Application Due Date:** [Standard due dates apply](#)

#### Accelerating the Pace of Drug Abuse Research Using Existing Data (R01)

National Institute on Drug Abuse

National Cancer Institute

National Institute on Alcohol Abuse and Alcoholism

[PAR-16-234](#)

**Application Due Date:** [Standard due dates apply](#)

#### Prescription Drug Abuse

National Institute on Drug Abuse

[PA-16-232](#) (R21)

[PA-16-233](#) (R01)

**Application Due Date:** [Standard due dates apply](#)

#### Program for Extramural/Intramural Alcohol Research Collaborations (U01)

National Institute on Alcohol Abuse and Alcoholism

[PAR-16-214](#)

**Application Due Date:** [Standard due dates apply](#)

#### Preclinical Research on Model Organisms to Predict Treatment Outcomes for Disorders Associated with Intellectual and Developmental Disabilities (R01)

National Institute of Child Health and Human Development

[PAR-16-215](#)

**Application Due Date:** [Standard due dates apply](#)

#### Outcome Measures for Use in Treatment Trials of Individuals with Intellectual and Developmental Disabilities (R01)

National Institute of Child Health and Human Development

[PAR-16-216](#)

**Application Due Date:** [Standard due dates apply](#)

#### NINDS Faculty Development Award to Promote Diversity in Neuroscience Research (K01)

National Institute of Neurological Disorders and Stroke

[PAR-16-219](#)

**Application Due Date:** [Standard due dates apply](#)

#### Mechanisms, Models, Measurement, & Management in Pain Research

National Institute of Nursing Research

National Institute on Aging

National Institute of Arthritis and Musculoskeletal and Skin Diseases

National Institute on Drug Abuse

National Institute of Dental and Craniofacial Research

National Center for Complementary and Integrative Health

National Institute on Minority Health and Health Disparities

[PA-16-187](#) (R21)

[PA-16-188](#) (R01)

**Application Due Date:** [Standard due dates apply](#)

#### Diet and Physical Activity Assessment Methodology (R01)

National Institute of Diabetes and Digestive and Kidney Diseases

National Cancer Institute

National Institute on Alcohol Abuse and Alcoholism

National Center for Complementary and Integrative Health

Office of Dietary Supplements

[PA-16-167](#)

**Application Due Date:** [Standard due dates apply](#)

#### Understanding Factors in Infancy and Early Childhood (Birth to 24 months) That Influence Obesity Development (R01)

National Institute of Diabetes and Digestive and Kidney Diseases

National Institute of Child Health and Human Development



## Research Opportunities, cont.

man Development  
National Institute on Minority Health and  
Health Disparities  
Office of Behavioral and Social Sciences  
Research

[PA-16-169](#)

**Application Due Date:** [Standard due dates apply](#)

*The Application of Big Data Analytics to  
Drug Abuse Research (R01)*

National Institute on Drug Abuse

[PA-16-119](#)

**Application Due Date:** [Standard due dates apply](#)

*Physical Activity and Weight Control Inter-  
ventions Among Cancer Survivors: Effects  
on Biomarkers of Prognosis and Survival*

National Cancer Institute

[PAR-16-122](#) (R01)

[PAR-16-123](#) (R21)

**Application Due Date:** [Standard due dates apply](#)

*Behavioral & Integrative Treatment Devel-  
opment Program*

National Institute on Drug Abuse

National Institute on Alcohol Abuse and  
Alcoholism

Office of Behavioral and Social Sciences  
Research

[PA-16-072](#) (R01)

[PA-16-073](#) (R34)

[PA-16-074](#) (R03)

**Application Due Date:** [Standard due dates apply](#)

Clinical Development of Minimally-  
Invasive Bioassays to Support Outpatient  
Clinical Trials of Therapeutics for Sub-  
stance Use Disorders

National Institute on Drug Abuse

[PA-16-075](#) (R21)

[PA-16-076](#) (R01)

**Application Due Date:** [Standard due dates apply](#)

*Behavioral Science Track Award for Rapid  
Transition (B/Start)(R03)*

National Institute on Drug Abuse

[PAR-16-071](#)

**Application Due Date:** [Standard due dates apply](#)

*Drug Abuse Prevention Intervention Re-  
search*

National Institute on Drug Abuse

[PA-15-080](#) (R21)

[PA-15-081](#) (R03)

[PA-15-082](#) (R01)

**Application Due Date:** [Standard due dates apply](#)

*Mechanistic Studies of Pain and Alcohol  
Dependence*

National Institute on Alcohol Abuse and  
Alcoholism

National Institute on Drug Abuse

[PA-15-026](#) (R01)

**Application Due Date:** [Standard due dates apply](#)

*Epidemiology of Drug Abuse*

National Institute on Drug Abuse

[PA-15-001](#) (R21)

[PA-15-002](#) (R03)

[PA-15-003](#) (R01)

**Application Due Date:** [Standard due dates apply](#)

*Biobehavioral and Technological Inter-  
ventions to Attenuate Cognitive Decline in  
Individuals with Cognitive Impairment or  
Dementia*

National Institute of Nursing Research

National Institute on Aging

[PA-15-015](#) (R21)

[PA-15-016](#) (R15)

[PA-15-017](#) (R01)

**Application Due Date:** [Standard due dates apply](#)

*Women & Sex/Gender Differences in Drug  
and Alcohol Abuse/Dependence*

National Institute on Drug Abuse

National Institute on Alcohol Abuse and  
Alcoholism

[PA-14-036](#) (R21)

[PA-14-037](#) (R03)

[PA-14-038](#) (R01)

**Application Due Date:** [Standard due dates apply](#)

*Substance Use and Abuse, Risky Decision  
Making and HIV/AIDS*

National Institute on Drug Abuse

National Institute on Alcohol Abuse and  
Alcoholism

[PA-14-061](#) (R01)

[PA-14-062](#) (R21)

[PA-14-063](#) (R03)

**Application Due Date:** [Standard due dates apply](#)

*Modeling Social Behavior (R01)*

National Cancer Institute

National Institute on Alcohol Abuse and  
Alcoholism

National Institute of Biomedical Imaging  
and Bioengineering

Eunice Kennedy Shriver National Institute  
of Child Health and Human Development

National Institute of Mental Health

National Center for Complementary and  
Integrative Health

[PAR-13-374](#)

**Application Due Date:** [Standard due dates apply](#)

*Neuroscience Research on Drug Abuse*

National Institute on Drug Abuse

[PA-13-338](#) (R01)

[PA-13-337](#) (R21)

[PA-13-336](#) (R03)

**Application Due Date:** [Standard due dates apply](#)

*Effects of Cannabis Use and Cannabinoids  
on the Developing Brain*

National Institute on Drug Abuse

[PA-14-163](#) (R01)

[PA-14-162](#) (R21)

[PA-14-164](#) (R03)

**Application Due Date:** [Standard due dates apply](#)

*Healthy Habits: Timing for Developing  
Sustainable Healthy Behaviors in Children  
and Adolescents*



## Research Opportunities, cont.

National Institute of Nursing Research  
Office of Behavioral and Social Sciences  
Research

[PA-14-177](#) (R01)

[PA-14-176](#) (R21)

**Application Due Date:** [Standard due dates apply](#)

*Clinical Studies of Mental Illness Not Involving Treatment Development, Efficacy, or Effectiveness Trials* National Institute of Mental Health

[PAR-14-165](#) (Collaborative R01)

**Application Due Date:** [Standard due dates apply](#)

*Lab to Marketplace: Tools for Brain and Behavioral Research*

National Institute of Mental Health

National Institute of Deafness and Other

Communication Disorders

[PA-14-250](#) (R43/R44)

**Application Due Date:** [Standard due dates apply](#)

*Advancing Interventions to Improve Medication Adherence*

Office of Behavioral and Social Sciences  
Research

National Eye Institute

National Heart, Lung, and Blood Institute

National Institute on Alcohol Abuse and  
Alcoholism

National Institute on Deafness and Other  
Communication Disorders

National Institute of Mental Health

National Institute of Nursing Research

National Institute on Drug Abuse

National Cancer Institute

[PA-14-335](#) (R21)

**Application Due Date:** [Standard due dates apply](#)

*BRAIN Initiative: Development, Optimization, and Validation of Novel Tools and Technologies for Neuroscience Research*

National Institute of Mental Health

National Institute of Aging

National Institute on Alcohol Abuse and  
Alcoholism

National Institute on Drug Abuse

National Institute of Neurological Disorders and Stroke

National Institute on Deafness and Other  
Communication Disorders

[PAR-15-090](#) (STTR) (R41/R42)

[PAR-15-091](#) (SBIR) (R43/R44)

**Application Due Date:** [Standard due dates apply](#)

*Functional Wellness in HIV: Maximizing the Treatment Cascade*

National Institute of Nursing Research

Office of Behavioral and Social Sciences  
Research

[PA-15-133](#) (R01)

[PA-15-134](#) (R21)

**Application Due Date:** [Standard due dates apply](#)

*Systems Science and Health in the Behavioral and Social Sciences*

Office of Behavioral and Social Sciences  
Research

National Cancer Institute

National Institute on Aging

National Institute on Alcohol Abuse and  
Alcoholism

National Institute of Biomedical Imaging  
and Bioengineering

Eunice Kennedy Shriver National Institute

of Child Health and Human Development

National Institute of Dental and Craniofacial  
Research

National Institute of Environmental  
Health Sciences

National Institute of Mental Health

National Institute of Nursing Research

Office of Disease Prevention

National Institute of General Medical  
Sciences

[PAR-15-047](#) (R21)

[PAR-15-048](#) (R01)

**Application Due Date:** [Standard due dates apply](#)

*International Research Collaboration on Drug Abuse and Addiction Research*

National Institute on Drug Abuse

[PA-15-141](#) (R03)

[PA-15-142](#) (R01)

[PA-15-143](#) (R21)

**Application Due Date:** [Standard due dates apply](#)

*Pilot and Feasibility Studies in Preparation for Drug and Alcohol Abuse Prevention Trials* (R34)

National Institute on Drug Abuse

National Institute on Alcohol Abuse and  
Alcoholism

[PA-15-177](#)

**Application Due Date:** [Standard due dates apply](#)

*Screening and Brief Alcohol Interventions in Underage and Young Adult Populations*

National Institute on Alcohol Abuse and  
Alcoholism

[PA-15-294](#) (R21)

[PA-15-295](#) (R01)

[PA-15-296](#) (R03)

**Application Due Date:** [Standard due dates apply](#)

*Alcohol Use Disorders: Behavioral Treatment, Services and Recovery Research*

National Institute on Alcohol Abuse and  
Alcoholism

[PA-15-299](#) (R01)

[PA-15-300](#) (R03)

[PA-15-301](#) (R21)

**Application Due Date:** [Standard due dates apply](#)

*Research on the Mechanisms and/or Behavioral Outcomes of Multisensory Processing* (R01)

National Institute on Aging

National Center for Complementary and  
Integrative Health

National Cancer Institute

National Eye Institute

National Institute of Child Health and  
Human Development

National Institute on Drug Abuse

National Institute on Deafness and Other  
Communication Disorders

National Institute of Dental and Craniofacial  
Research





## Research Opportunities, cont.

National Institute of Neurological Disorders and Stroke  
Office of Behavioral and Social Sciences Research  
Office of Research on Women's Health  
[PA-15-347](#)

**Application Due Date:** [Standard due dates apply](#)

*Major Opportunities for Research in Epidemiology of Alzheimer's Disease and Cognitive Resilience (R01)*

National Institute on Aging  
[PAR-15-356](#)

**Application Due Date:** [Standard due dates apply](#)

*Research Career Enhancement Award to Advance Therapy Development for Alzheimer's (K18)*

National Institute on Aging  
[PAR-17-052](#)

**Application Due Date:** [Standard due dates apply](#)

*Interdisciplinary Research to Understand the Complex Biology of Resilience to Alzheimer's Disease Risk (R01)*

National Institute on Aging  
[RFA-AG-17-061](#)

**Application Due Date:** [Standard due dates apply](#)

*Leveraging Existing Cohort Studies to Clarify Risk and Protective Factors for Alzheimer's Disease and Related Dementias (R01)*

National Institute on Aging  
[PAR-17-054](#)

**Application Due Date:** [Standard due dates apply](#)

*AIDS-Science Track Award for Research Transition (R03)*

National Institute on Drug Abuse  
[PA-15-290](#)

**Application Due Date:** [Standard AIDS due dates apply](#)

*HIV/AIDS High Priority Drug Abuse Re-*

*search (R01)*

National Institute on Drug Abuse  
[PAS-16-018](#)

**Application Due Date:** [Standard AIDS due dates apply](#)

*Reductions in Illicit Drug Use and Functional Outcomes (R21/R33)*

National Institute on Drug Abuse  
[PA-15-099](#)

**Application Due Date:** [Standard due dates apply](#)  
**(Letter of Intent required)**

*Target Assessment, Engagement and Data Replicability to Improve Substance Use Disorders Treatment Outcomes*

National Institute on Drug Abuse  
National Cancer Institute  
National Institute on Alcohol Abuse and Alcoholism

[PAR-16-352](#) (R33)

[PAR-16-353](#) (R21/R33)

**Application Due Date:** [Standard due dates apply](#)

*Research on Autism Spectrum Disorders*

National Institute of Mental Health  
National Institute of Child Health and Human Development

National Institute on Deafness and Other Communication Disorders  
National Institute of Environmental Health

Sciences

National Institute of Neurological Disorders and Stroke

[PA-16-386](#) (R21)

[PA-16-387](#) (R03)

[PA-16-388](#) (R01)

**Application Due Date:** [Standard due dates apply](#)

*Mentored Quantitative Research Development Award (Parent K25)*

National Heart, Lung, and Blood Institute  
National Institute on Aging  
National Institute on Alcohol Abuse and Alcoholism

National Institute of Allergy and Infectious Diseases

National Institute of Arthritis and Musculoskeletal and Skin Diseases

National Institute of Biomedical Imaging and Bioengineering

Eunice Kennedy Shriver National Institute of Child Health and Human Development

National Institute on Deafness and Other Communication Disorders

National Institute of Dental and Craniofacial Research

National Institute of Diabetes and Digestive and Kidney Diseases

National Institute on Drug Abuse

National Institute of Environmental Health Sciences

National Institute of General Medical Sciences

[PA-16-194](#)

**Application Due Date:** [Standard due dates apply](#)

*Mentored Research Scientist Development Award (Parent K01)*

National Heart, Lung, and Blood Institute  
National Human Genome Research Institute

National Institute on Aging

National Institute on Alcohol Abuse and Alcoholism

National Institute of Allergy and Infectious Diseases

National Institute of Arthritis and Musculoskeletal and Skin Diseases

National Institute of Biomedical Imaging and Bioengineering

National Institute of Child Health and Human Development

National Institute on Deafness and Other Communication Disorders

National Institute of Dental and Craniofacial Research

National Institute on Drug Abuse

National Institute of Mental Health

National Institute of Nursing Research

National Center for Complementary and Integrative Health

[PA-16-190](#)

**Application Due Date:** [Standard due dates apply](#)



## Research Opportunities, cont.

### Development and/or Validation of Devices or Electronic Systems to Monitor or Enhance Mind and Body Interventions

National Center for Complementary and Integrative Health

[PAS-17-022](#) (R43/R44)

[PAS-17-023](#) (R41/R42)

**Application Due Date:** [Standard due dates apply](#)

### Common Mechanisms and Interactions Among Neurodegenerative Diseases (R01)

National Institute on Aging

National Institute of Neurological Disorders and Stroke

[PAS-17-028](#)

**Application Due Date:** [Standard due dates apply](#)

### Tools for Clinical Care and Management of Alzheimer's Disease (AD) and Its Comorbidities

National Institute on Aging

[PAR-17-066](#) (R41/R42)

[PAR-17-067](#) (R43/R44)

**Application Due Date:** [Standard due dates apply](#)

### Advancing Research on Alzheimer's Disease (AD) and Alzheimer's-Disease-Related Dementias (ADRD)

National Institute on Aging

[PAS-17-064](#)

[PAS-17-065](#)

**Application Due Date:** [Standard due dates apply](#)

### BRAIN Initiative: Standards to Define Experiments Related to the BRAIN Initiative (R24)

National Institute of Mental Health

National Eye Institute

National Institute on Aging

National Institute on Alcohol Abuse and Alcoholism

National Institute of Biomedical Imaging and Bioengineering

National Institute of Child Health and Human Development

National Institute on Deafness and Other Communication Disorders

National Institute on Drug Abuse

National Institute of Neurological Disorders and Stroke

National Center for Complementary and Integrative Health

[RFA-MH-17-256](#)

**Application Due Date:** **01/10/17 plus additional deadlines through 2017**

### BRAIN Initiative: Data Archives for the BRAIN Initiative (R24)

National Institute of Mental Health

National Eye Institute

National Institute on Aging

National Institute on Alcohol Abuse and Alcoholism

National Institute of Biomedical Imaging and Bioengineering

National Institute of Child Health and Human Development

National Institute on Deafness and Other Communication Disorders

National Institute on Drug Abuse

National Institute of Neurological Disorders and Stroke

National Center for Complementary and Integrative Health

[RFA-MH-17-255](#)

**Application Due Date:** **01/17/17**

### Pre-application: Stimulating Peripheral Activity to Relieve Conditions (SPARC): Comprehensive Functional Mapping of Neuroanatomy and Neurobiology of Organs (OT1)

National Institutes of Health

[RFA-RM-15-003](#)

**Application Due Date:** **01/17/17 and bi-monthly through 2018**

BRAIN Initiative: Integration and Analysis of BRAIN Initiative Data (R24)

National Institute of Mental Health

National Eye Institute

National Institute on Aging

National Institute on Alcohol Abuse and Alcoholism

National Institute of Biomedical Imaging and Bioengineering

National Institute of Child Health and Human Development

National Institute on Deafness and Other Communication Disorders

National Institute on Drug Abuse

National Institute of Neurological Disorders and Stroke

National Center for Complementary and Integrative Health

[RFA-MH-17-257](#)

**Application Due Date:** **01/19/17**

### BRAIN Initiative: Proof of Concept Development of Early Stage Next Generation Human Brain Imaging (R01)

National Institute of Biomedical Imaging and Bioengineering

National Eye Institute

National Institute on Aging

National Institute on Alcohol Abuse and Alcoholism

National Institute of Child Health and Human Development

National Institute on Deafness and Other Communication Disorders

National Institute on Drug Abuse

National Institute of Mental Health

National Institute of Neurological Disorders and Stroke

National Center for Complementary and Integrative Health

[RFA-EB-17-001](#)

**Application Due Date:** **01/20/17**

### BRAIN Initiative: Development of Next Generation Human Brain Imaging Tools and Technologies (U01)

National Institute of Biomedical Imaging and Bioengineering

National Eye Institute

National Institute on Aging

National Institute on Alcohol Abuse and Alcoholism

National Institute of Child Health and Human Development

National Institute on Deafness and Other Communication Disorders

National Institute on Drug Abuse

National Institute of Mental Health

National Institute of Neurological Disorders and Stroke

National Center for Complementary and Integrative Health





## Research Opportunities, cont.

### [RFA-EB-17-002](#)

**Application Due Date: 01/20/17**

*BRAIN Initiative Cell Census Network (BICCN) - Specialized Collaboratory on Human and Non-Human Primate Brain Cell Atlases (U01)*

National Institute of Mental Health  
National Eye Institute  
National Institute on Aging  
National Institute on Alcohol Abuse and Alcoholism  
National Institute of Biomedical Imaging and Bioengineering  
National Institute of Child Health and Human Development  
National Institute on Deafness and Other Communication Disorders  
National Institute on Drug Abuse  
National Institute of Neurological Disorders and Stroke  
National Center for Complementary and Integrative Health

### [RFA-MH-17-210](#)

**Application Due Dates: 01/23/17 and 10/13/17**

*BRAIN Initiative Cell Census Network (BICCN) - Brain Cell Data Center (U24)*

National Institute of Mental Health  
National Eye Institute  
National Institute on Aging  
National Institute on Alcohol Abuse and Alcoholism  
National Institute of Biomedical Imaging and Bioengineering  
National Institute of Child Health and Human Development  
National Institute on Deafness and Other Communication Disorders  
National Institute on Drug Abuse  
National Institute of Neurological Disorders and Stroke  
National Center for Complementary and Integrative Health

### [RFA-MH-17-215](#)

**Application Due Date: 01/23/17**

*BRAIN Initiative Cell Census Network (BICCN) – Comprehensive Center on Mouse Brain Cell Atlas (U19)*

National Institute of Mental Health  
National Eye Institute  
National Institute on Aging  
National Institute on Alcohol Abuse and Alcoholism  
National Institute of Biomedical Imaging and Bioengineering  
National Institute of Child Health and Human Development  
National Institute on Deafness and Other Communication Disorders  
National Institute on Drug Abuse  
National Institute of Neurological Disorders and Stroke  
National Center for Complementary and Integrative Health

### [RFA-MH-17-225](#)

**Application Due Date: 01/23/17**

*BRAIN Initiative Cell Census Network (BICCN) - Specialized Collaboratory on Mouse Brain Cell Atlas (U01)*

National Institute of Mental Health  
National Eye Institute  
National Institute on Aging  
National Institute on Alcohol Abuse and Alcoholism  
National Institute of Biomedical Imaging and Bioengineering  
National Institute of Child Health and Human Development  
National Institute on Deafness and Other Communication Disorders  
National Institute on Drug Abuse  
National Institute of Neurological Disorders and Stroke  
National Center for Complementary and Integrative Health

### [RFA-MH-17-230](#)

**Application Due Dates: 01/23/17 and 10/13/17**

*BRAIN Initiative: Research on the Ethical Implications of Advancements in Neurotechnology and Brain Science (R01)*

National Institute of Mental Health  
National Eye Institute  
National Institute on Aging  
National Institute on Alcohol Abuse and Alcoholism  
National Institute of Biomedical Imaging

and Bioengineering  
National Institute of Child Health and Human Development  
National Institute on Deafness and Other Communication Disorders  
National Institute on Drug Abuse  
National Institute of Neurological Disorders and Stroke  
National Center for Complementary and Integrative Health

### [RFA-MH-17-260](#)

**Application Due Date: 01/30/17**

*Encouraging Appropriate Care Using Behavioral Economics through Electronic Health Records (R21/R33)*

National Institute on Aging  
National Institute on Drug Abuse

### [RFA-AG-17-013](#)

**Application Due Date: 01/30/17**

*BRAIN Initiative: Research Opportunities Using Invasive Neural Recording and Stimulating Technologies in the Human Brain (U01)*

National Institute of Neurological Disorders and Stroke  
National Eye Institute  
National Institute on Aging  
National Institute on Alcohol Abuse and Alcoholism  
National Institute of Biomedical Imaging and Bioengineering  
National Institute of Child Health and Human Development  
National Institute on Deafness and Other Communication Disorders  
National Institute on Drug Abuse  
National Institute of Mental Health  
National Center for Complementary and Integrative Health

### [RFA-NS-17-019](#)

**Application Due Date: 02/01/17**

Cancer-Related Behavioral Research through Integrating Existing Data  
National Cancer Institute

### [PAR-16-255](#) (R21)

### [PAR-16-256](#) (R01)

**Application Due Date: 02/15/17, plus additional dates through 2019**



## Research Opportunities, cont.

*Exploratory Clinical Trials of Mind and Body Interventions for NCCAM High Priority Research Topics (R34)*

National Center for Complementary and Integrative Health

[PAR-14-182](#)

**Application Due Dates: 02/10/17, plus additional deadlines through 2017**

*Leveraging Existing Resources for Research on Lewy Body Dementia (R03)*

National Institute of Neurological Disorders and Stroke

National Institute on Aging

[RFA-NS-17-016](#)

**Application Due Date: 02/10/17**

*Diet and Physical Activity Assessment Methodology (R21)*

National Institute of Diabetes and Digestive and Kidney Diseases

National Cancer Institute

National Heart, Lung, and Blood Institute

National Institute on Alcohol Abuse and Alcoholism

National Institute of Child Health and Human Development

National Institute of Nursing Research  
Office of Dietary Supplements

[PAR-15-171](#)

**Application Due Date: 02/16/17, plus additional deadlines through 2018**

*Novel Assays to Address Translational Gaps in Treatment Development (UG3/UH3)*

National Institute of Mental Health

[PAR-16-065](#)

**Application Due Date: 02/23/17, plus additional deadlines through 2018**

*Ancillary Studies to Identify Behavioral and/or Psychological Phenotypes Contributing to Obesity (R01)*

National Institute of Diabetes and Digestive and Kidney Diseases

Division of Program Coordination, Planning and Strategic Initiatives, Office of Disease Prevention

Office of Behavioral and Social Sciences Research

[PAR-16-304](#)

**Application Due Date: 02/28/17, plus additional deadlines through 2019**

*BRAIN Initiative: Team-Research BRAIN Circuit Programs - TeamBCP (U19)*

National Institute of Neurological Disorders and Stroke

National Eye Institute

National Institute on Aging

National Institute on Alcohol Abuse and Alcoholism

National Institute of Biomedical Imaging and Bioengineering

National Institute of Child Health and Human Development

National Institute on Deafness and Other Communication Disorders

National Institute on Drug Abuse

National Institute of Mental Health

National Center for Complementary and Integrative Health

[RFA-NS-17-018](#)

**Application Due Date: 03/07/17, plus additional deadlines through 2017**

*Investigator Initiated Extended Clinical Trial (R01)*

National Institute of Allergy and Infectious Diseases

National Institute on Aging

National Institute of General Medical Sciences

[PAR-17-056](#)

**Application Due Date: 03/07/17, plus additional deadlines through 2019**

*BRAIN Initiative: Targeted BRAIN Circuits Projects - TargetedBCP (R01)*

National Institute of Neurological Disorders and Stroke

National Eye Institute

National Institute on Aging

National Institute on Alcohol Abuse and Alcoholism

National Institute of Biomedical Imaging and Bioengineering

National Institute of Child Health and Hu-

man Development

National Institute on Deafness and Other Communication Disorders

National Institute on Drug Abuse

National Institute of Mental Health

National Center for Complementary and Integrative Health

[RFA-NS-17-014](#)

**Application Due Date: 03/08/17**

*BRAIN Initiative: Exploratory Targeted BRAIN Circuits Projects - eTargetedBCP (R21)*

National Institute of Neurological Disorders and Stroke

National Eye Institute

National Institute on Aging

National Institute on Alcohol Abuse and Alcoholism

National Institute of Biomedical Imaging and Bioengineering

National Institute of Child Health and Human Development

National Institute on Deafness and Other Communication Disorders

National Institute on Drug Abuse

National Institute of Mental Health

National Center for Complementary and Integrative Health

[RFA-NS-17-015](#)

**Application Due Date: 03/08/17**

*Reducing the Duration of Untreated Psychosis in the United States*

National Institute of Mental Health

[PAR-16-264 \(R34\)](#)

[PAR-16-265 \(R01\)](#)

**Application Due Date: 03/17/17, plus additional deadlines through 2019**

**Standard NIH due dates for all activity codes including new submissions, renewals, and resubmissions can be found [here](#).**

### National Science Foundation

*Perception*  
Perception, Action & Cognition  
[PD 09-7252](#)

**Application Proposal Window: 01/15/17 to 02/01/17 (Research Proposals)**



## Research Opportunities, cont.

**Application Proposal Window: 05/15/17 to 06/15/17 (Workshops and Conferences)**

*Social Psychology*

[PD-98-1332](#)

**Application Due Date: 01/17/17**

*Developmental and Learning Sciences*

[PD-08-1698](#)

**Application Due Date: 01/17/16**

*Decision, Risk and Management Sciences (DRMS)*

[PD 98-1321](#)

**Application Due Date: 01/18/17**

*Methodology, Measurement, and Statistics (MMS)*

[12-510](#)

**Application Due Date: 01/26/17**

*Science of Organizations*

[PD 11-8031](#)

**Application Due Date: 02/02/17**

*Cognitive Neuroscience*

[PD 15-1699](#)

**Application Due Date: 02/13/17**

### *American Psychological Foundation*

*Esther Katz Rosen Fund Grants*

[APF Guidelines Here](#)

**Application Due Date: 03/01/16**

*Wayne F. Placek Grants*

[APF Guidelines Here](#)

**Application Due Date 03/01/17**

Caplan Foundation

*Caplan Foundation for Early Childhood Research Grants*

[Caplan Guidelines Here](#)

**Letter of Intent Due Date: 01/31/17**

### *Human Frontier Science Program*

*Human Frontier Science Program – Program Grants*

[HFSP Guidelines Here](#)

**Letter of Intent Due Date: 03/31/16**

*Human Frontier Science Program – 2017 Young Investigators' Grants*

[HFSP Guidelines Here](#)

**Letter of Intent Due Date: 03/31/16**

### *Russell Sage Foundation*

*Social Inequality (plus additional programs)*

Russell Sage Foundation

[Funding Opportunity Information](#)

**Letter of Inquiry Due Date: 01/09/17**

**Application Due Date: 03/13/17**

### *William T. Grant Foundation*

*William T. Grant Foundation Research Grants*

[Funding Opportunity Information](#)

**Letter of Inquiry Due Date: 01/12/17, plus other deadlines throughout 2017**

### *UNC*

*NC TraCS \$2k Award*

[TraCS \\$2k Guidelines](#)

**Application Due Dates: 12/20/16, plus monthly deadlines throughout 2017**

*NC TraCS Carolina Kickstart Commercialization Award*

[Carolina Kickstart Guidelines](#)

**Applicaton Due Date:01/31/17**

*NC TraCS \$5k-\$50k Grants (50% matching required)*

[TraCS \\$5k-\\$50k Guidelines](#)

**Application Due Date: 03/28/17**



## Research Opportunities for Graduate Students & Postdocs

If you are interested in applying for any of these opportunities, contact Phil Lee, Grants Management Officer, at [palee@email.unc.edu](mailto:palee@email.unc.edu).



### *National Institutes of Health*

*Ruth L. Kirschstein National Research Ser-*

*vice Awards (NRSA)*

Check guidelines for list of participating institutes

[PA-16-309](#) (F31 Predoctoral)

[PA-16-308](#) (F31D Predoctoral Diversity)

[PA-16-307](#) (F32 Postdoctoral)

**Application Due Date: Standard due dates apply**

*NINDS Ruth L. Kirschstein National Research Service Award (NRSA) for Training*

*of Postdoctoral Fellows (F32)*

National Institute of Neurological Disorders and Stroke

[PAR-16-458](#) (F32 Postdoctoral)

**Application Due Date: Standard due dates apply**

*NIH Pathway to Independence Award (K99/R00)*

Check guidelines for list of participating institutes





## Research Opportunities, cont.

[PA-16-193](#)

**Application Due Date:** [Standard due dates apply](#)

*Drug Abuse Dissertation Research (R36)*  
National Institute on Drug Abuse

[PA-16-443](#)

**Application Due Date:** [Standard due dates apply](#)

*Mentored Research Scientist Development Award (Parent K01)*

National Heart, Lung, and Blood Institute  
National Human Genome Research Institute

National Institute on Aging

National Institute on Alcohol Abuse and Alcoholism

National Institute of Allergy and Infectious Diseases

[PA-16-190](#)

**Application Due Date:** [Standard due dates apply](#)

*Mentored Quantitative Research Development Award (Parent K25)*

National Heart, Lung, and Blood Institute

National Institute on Aging

National Institute on Alcohol Abuse and Alcoholism

National Institute of Allergy and Infectious Diseases

National Institute of Arthritis and Musculoskeletal and Skin Diseases

National Institute of Biomedical Imaging and Bioengineering

Eunice Kennedy Shriver National

Institute of Child Health and Human Development

National Institute on Deafness and Other Communication Disorders

National Institute of Dental and Craniofacial Research

National Institute of Diabetes and Digestive and Kidney Diseases

National Institute on Drug Abuse

National Institute of Environmental Health Sciences

National Institute of General Medical Sciences

[PA-16-194](#)

**Application Due Date:** [Standard due dates apply](#)

*NINDS Advanced Postdoctoral Career Transition Award to Promote Diversity in Neuroscience Research (K22)*

National Institute of Neurological Disorders and Stroke

[PAR-16-220](#)

**Application Due Date:** [Standard due dates apply](#)

*BRAIN Initiative Fellows: Ruth L. Kirschstein National Research Service Award (NRSA) Individual Postdoctoral Fellowship (F32)*

National Institute of Mental Health

National Eye Institute

National Institute on Aging

National Institute on Alcohol Abuse and Alcoholism

National Institute of Biomedical Imaging and Bioengineering

Eunice Kennedy Shriver National Institute of Child Health and Human Development

National Institute on Deafness and Other Communication Disorders

National Institute on Drug Abuse

National Institute of Neurological Disorders and Stroke

National Center for Complementary and Integrative Health

[RFA-MH-17-250](#)

**Application Due Date:** 03/15/17

### APA

*APA Predoctoral Fellowship in Mental Health and Substance Abuse Services Program*

[APA Guidelines Here](#)

**Application Due Date:** 01/15/17

*APA Postdoctoral Fellowship in Mental Health and Substance Abuse Services Program*

[APA Guidelines Here](#)

**Application Due Date:** 01/15/17

*Dissertation Research Grant in Developmental Psychology*

[APA Guidelines Here](#)

**Application Due Date:** 03/15/15

### APF

*Randy Gerson Memorial Grant*

[APF Guidelines Here](#)

**Application Due Date:** 02/01/16

*Esther Katz Rosen Fund Grants*

[APF Guidelines Here](#)

**Application Due Date:** 03/01/16

*Wayne F. Placek Grants*

[APF Guidelines Here](#)

**Application Due Date:** 03/01/17

### SABA

*Society for the Advancement of Behavior Analysis Grants*

[Sidney W. and Janet R. Bijou Grant](#)

[Innovative Student Research Grant](#)

[International Development Grant](#)

**Application Due Dates:** 03/01/17



### Department of Psychology and Neuroscience

235 E. Cameron Avenue

Davie Hall | CB 3270

Chapel Hill, NC 27599-3520

(919) 843-5467

[Email your submissions](#) for the next  
Department Newsletter!

Visit our [Department Newsletter](#)

[Archive](#) for past newsletters.