

March
2016

THE UNIVERSITY
of NORTH CAROLINA
at CHAPEL HILL



Psychology & Neuroscience Department Newsletter

Volume 5 | Issue 7

March 2016

THIS ISSUE

New Staff:	Page 2
Dept Colloquium:	Page 3
Dept Events:	Page 3
Research Opps:	Page 4

EVENTS

Brain Awareness Week
March 21—25

2016 Dept Colloquium:
Dr. Ernest Davenport
March 23 @ 3:30

Diversifying Clinical
Psychology Weekend
April 7—9



Department News

The Clinical Psychology Program is ranked #2 in the 2017 U.S. News and World Report of Best Clinical Psychology Program. U.S. News and World Report's annual rankings are based on expert opinions on program excellence and statistical indicators that measure the quality of a school's faculty, research, and students. Surveys for the 2017 rankings were conducted during Fall 2015 and early 2016.



Leslie Morales, a senior majoring in Psychology, is a 2016 recipient of the University Award for the Advancement of Women. This award was created in 2006 to honor individuals who have mentored or supported women on campus, elevated the status of women or improved campus policies for them, promoted women's recruitment and retention, or promoted professional development for women.

Leslie won for her mentorship as a Co-Director of the Scholars' Latino Initiative, a TarHeel program designed to help students and families navigate the educational system and pursue higher education. Leslie was honored at a ceremony at the Campus Y on March 4, 2016.



Dr. Barbara Fredrickson, Kenan Distinguished Professor of Social Psychology, is a recipient of the 2016-17 James McKeen Cattell Sabbatical Fellowship. The Cattell Fellowship supplements the regular sabbatical allowances provided by recipients home institutions to allow an extension of leave and supports scientific research. Dr. Fredrickson plans to use her Cattell sabbatical to expand her methodological toolkit to assess the non-conscious, physiological, and neural underpinnings of face-to-face emotional connections in residence at Univ. of California Berkeley.

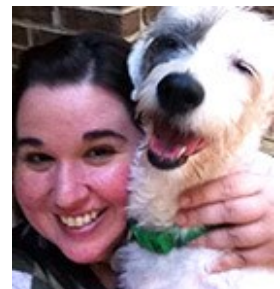


Welcome to New Staff!



James Foster is the new Program Coordinator for the Behavioral Neuroscience and Developmental Psychology graduate programs. He has a B.A. in Psychology from the University of Maine and a Master's in Education from Wake Forest University. James lives with his fiancé, Stacey, in Chapel Hill with their two cats, and enjoys reading, games, and going to the movies or to the theater. We are so glad that James has joined the Department!

Emily Mallasch joined the Department as our new Clinical Psychology Program Coordinator. She is a full-time college student at Peace University studying Business Administration with a minor in Marketing. When she's not at Davie Hall or studying, she is catering to every whim and fancy of Buster Keaton the dog! This includes lots of time at the dog park, long walks exploring their neighborhood, and taking BK to local assisted living centers to socialize with residents of the Dementia Unit. Welcome, Emily!



News, continued

Daniel Lee, a graduate student in Clinical Psychology, is the recipient of the First Place Student Poster Prize at the American Psychological Association Division 36's 2016 Midyear Conference. Division 36, Society of the Psychology of Religion and Spirituality, hosted the 2016 Midyear Conference at St. Joseph's College in Brooklyn, New York March 11– 12, 2016. Daniel won for his poster, "Religious Development in African-American Adolescents: Growth Patterns that Offer Protection in the Context of Stressful Life Events."



Six of our Psychology and Neuroscience undergraduate students are the recipients of the 2015-16 Lindquist Undergraduate Research Grants. The Lindquist Undergraduate Research Fund funds undergraduate research projects in the department. These funds can be used to buy needed equipment or software, recruit participants, or to offset costs related to presenting or publishing research. In total, six grants are awarded over the academic year. This year's recipients include:

- Samantha Dove—"Relationship Between Stress and Habitual Behavior: How They Relate to Relapse"
- Isai Garcia-Baza—"Parental Support, Cultural Familial Values, and Student Academic Outcomes in Hispanic Families"
- Jocelyn Le—"Mindfulness as a Function of Everyday Work Experience"
- Nadia Peyravian—"Cognitive Aging in Autism Spectrum Disorders"
- Jasmine Shah—"The Effects of Comorbid Major Depression on Cognitive Functioning in Adolescents with Autism Spectrum Disorder"
- Megan Villegas—"Improving Body Satisfaction through the Formation of If-Then Plans"



2016 Department Colloquium

Our 2016 Department Colloquium features **Dr. Ernest C. Davenport**. Dr. Davenport is a professor in the Quantitative Methods in Education Program within the College of Educational Psychology and Human Development at the University of Minnesota.

He received a B.S. degree in Psychology and Computer Science from Duke University and his Masters and Doctoral degrees from the University of North Carolina Chapel Hill.

Dr. Davenport has had a long-standing role as the Director of an ACT/SAT review course for at-risk students and was one of the founders of Minnesota's Office of Educational Accountability (OEA), which was created to assist with educational accountability in the state.

His research primarily focuses on the study of measurement to better understand achievement gaps, with special interests in the relationship between student experiences and academic success.

Dr. Davenport will present **"Reliability, Internal Consistency, and Dimensionality in Psychological Assessment"** for our 2016 Department Colloquium. Join us Wednesday, March 23 at 3:30 pm in Davie Hall, room 112.

Departmental Events

Behavioral Neuroscience Seminars

Davie 302, 12:30—1:45 pm

- 3/22 Katie Kelm, Ph.D.**
Medical Writing and My Transition from Academia
- 3/29 Marian Sepulveda-Orengo**
Riluzole Impairs Reinstatement to Cocaine Seeking and Restores Intrinsic Excitability in the Prefrontal Cortex

Clinical Lunch Series

Davie 261, 12:00—1:00 pm

- 4/15 Desiree Griffin, Ph.D.**
A Clinician's Guide to Navigating the Legal System
- 4/22 Awards Ceremony**

Cognitive Tea Talks

Davie 347, 12:30-1:30 pm

- 3/24 Jessica Cohen, Ph.D.**
Segregation and Integration of Functional Brain Networks in Health and Disease
- 3/31 Adam Smith**
The Impact of Isolation on the Attentional Boost Effect

Developmental Lunch Series

Davie 347, 12:00—1:00 pm

- 3/23 Vanessa Volpe**
Psychology & Neuroscience
UNC Chapel Hill
- 3/30 Cheatham Nutrition and Cognition Laboratory**
UNC Chapel Hill
- 4/6 Andrea Hussong, Ph.D.**
Professor
UNC Chapel Hill

Quantitative Forums

Davie 347, 12:00—1:00 pm

- 3/21 Michael Giordano**
Robert MacCallum, Ph.D.
Psychology & Neuroscience
UNC Chapel Hill
- 3/28 Daniel Bauer, Ph.D.**
Psychology & Neuroscience
UNC Chapel Hill
- 4/4 Lloyd Edwards, Ph.D.**
UNC Gillings School of
Global Public Health

Social ORGs

Davie 302, 11:30—1:00pm

- 3/21 Batja de Mesquita, Ph.D.**
Social & Cultural Psych.
University of Belgium
- 3/28 Phil Lee**
Psychology & Neuroscience
UNC Chapel Hill
- 4/4 Keith Payne, Ph.D.**
Psychology & Neuroscience
UNC Chapel Hill



Research Opportunities for Faculty

If you are interested in applying for any of these opportunities, contact Phil Lee, Grants Management Officer, at palee@email.unc.edu.



National Institutes of Health

The Application of Big Data Analytics to Drug Abuse Research (R01)

National Institute on Drug Abuse

[PA-16-119](#)

Application Due Date: [Standard due dates apply](#)

Physical Activity and Weight Control Interventions Among Cancer Survivors: Effects on Biomarkers of Prognosis and Survival
National Cancer Institute

[PA-16-122](#) (R01)

[PA-16-123](#) (R21)

Application Due Date: [Standard due dates apply](#)

Behavioral & Integrative Treatment Development Program

National Institute on Drug Abuse

National Institute on Alcohol Abuse and Alcoholism

Office of Behavioral and Social Sciences Research

[PA-16-072](#) (R01)

[PA-16-073](#) (R34)

[PA-16-074](#) (R03)

Application Due Date: [Standard due dates apply](#)

Clinical Development of Minimally-Invasive Bioassays to Support Outpatient Clinical Trials of Therapeutics for Substance Use Disorders

National Institute on Drug Abuse

[PA-16-075](#) (R21)

[PA-16-076](#) (R01)

Application Due Date: [Standard due dates apply](#)

Behavioral Science Track Award for Rapid

Transition (B/Start)(R03)

National Institute on Drug Abuse

[PAR-16-071](#)

Application Due Date: [Standard due dates apply](#)

Drug Abuse Prevention Intervention Research

National Institute on Drug Abuse

[PA-15-080](#) (R21)

[PA-15-081](#) (R03)

[PA-15-082](#) (R01)

Application Due Date: [Standard due dates apply](#)

Mechanistic Studies of Pain and Alcohol Dependence

National Institute on Alcohol Abuse and Alcoholism

National Institute on Drug Abuse

[PA-15-026](#) (R01)

Application Due Date: [Standard due dates apply](#)

Epidemiology of Drug Abuse

National Institute on Drug Abuse

[PA-15-001](#) (R21)

[PA-15-002](#) (R03)

[PA-15-003](#) (R01)

Application Due Date: [Standard due dates apply](#)

Biobehavioral and Technological Interventions to Attenuate Cognitive Decline in Individuals with Cognitive Impairment or Dementia

National Institute of Nursing Research

National Institute on Aging

[PA-15-015](#) (R21)

[PA-15-016](#) (R15)

[PA-15-017](#) (R01)

Application Due Date: [Standard due dates apply](#)

Women & Sex/Gender Differences in Drug and Alcohol Abuse/Dependence

National Institute on Drug Abuse

National Institute on Alcohol Abuse and Alcoholism

[PA-14-036](#) (R21)

[PA-14-037](#) (R03)

[PA-14-038](#) (R01)

Application Due Date: [Standard due dates apply](#)

Substance Use and Abuse, Risky Decision Making and HIV/AIDS

National Institute on Drug Abuse

National Institute on Alcohol Abuse and Alcoholism

[PA-14-061](#) (R01)

[PA-14-062](#) (R21)

[PA-14-063](#) (R03)

Application Due Date: [Standard due dates apply](#)

Modeling Social Behavior (R01)

National Cancer Institute

National Institute on Alcohol Abuse and Alcoholism

National Institute of Biomedical Imaging and Bioengineering

Eunice Kennedy Shriver National Institute of Child Health and Human Development

National Institute of Mental Health

National Center for Complementary and Integrative Health

[PAR-13-374](#)

Application Due Date: [Standard due dates apply](#)

Neuroscience Research on Drug Abuse

National Institute on Drug Abuse

[PA-13-338](#) (R01)

[PA-13-337](#) (R21)

[PA-13-336](#) (R03)

Application Due Date: [Standard due dates apply](#)

Implication of New Digital Media Use for Underage Drinking, Drinking-Related Behaviors, and Prevention Research

National Institute on Alcohol Abuse and Alcoholism

[PA-13-262](#) (R01)

[PA-13-263](#) (R21)

Application Due Date: [Standard due dates apply](#)

Effects of Cannabis Use and Cannabinoids



Research Opportunities, cont.

on the Developing Brain

National Institute on Drug Abuse

[PA-14-163](#) (R01)

[PA-14-162](#) (R21)

[PA-14-164](#) (R03)

Application Due Date: [Standard due dates apply](#)

Healthy Habits: Timing for Developing Sustainable Healthy Behaviors in Children and Adolescents

National Institute of Nursing Research
Office of Behavioral and Social Sciences Research

[PA-14-177](#) (R01)

[PA-14-176](#) (R21)

Application Due Date: [Standard due dates apply](#)

Clinical Studies of Mental Illness Not Involving Treatment Development, Efficacy, or Effectiveness Trials

National Institute of Mental Health

[PAR-14-165](#) (Collaborative R01)

Application Due Date: [Standard due dates apply](#)

Lab to Marketplace: Tools for Brain and Behavioral Research

National Institute of Mental Health
National Institute of Deafness and Other Communication Disorders

[PA-14-250](#) (R43/R44)

Application Due Date: [Standard due dates apply](#)

Notice of Information on High-Priority Research Areas to Understand and Reduce Mental Health Disparities

National Institutes of Mental Health

[NOT-MH-14-033](#) (R01, R21, and other opportunities)

Application Due Date: [Standard due dates apply](#)

Advancing Interventions to Improve Medication Adherence

Office of Behavioral and Social Sciences Research
National Eye Institute

National Heart, Lung, and Blood Institute
National Institute on Alcohol Abuse and Alcoholism

National Institute on Deafness and Other Communication Disorders

National Institute of Mental Health

National Institute of Nursing Research

National Institute on Drug Abuse

National Cancer Institute

[PA-14-335](#) (R21)

Application Due Date: [Standard due dates apply](#)

BRAIN Initiative: Development, Optimization, and Validation of Novel Tools and Technologies for Neuroscience Research

National Institute of Mental Health

National Institute of Aging

National Institute on Alcohol Abuse and Alcoholism

National Institute on Drug Abuse

National Institute of Neurological Disorders and Stroke

National Institute on Deafness and Other Communication Disorders

[PAR-15-090](#) (STTR) (R41/R42)

[PAR-15-091](#) (SBIR) (R43/R44)

Application Due Date: [Standard due dates apply](#)

Functional Wellness in HIV: Maximizing the Treatment Cascade

National Institute of Nursing Research
Office of Behavioral and Social Sciences Research

[PA-15-133](#) (R01)

[PA-15-134](#) (R21)

Application Due Date: [Standard due dates apply](#)

Systems Science and Health in the Behavioral and Social Sciences

Office of Behavioral and Social Sciences Research

National Cancer Institute

National Institute on Aging

National Institute on Alcohol Abuse and Alcoholism

National Institute of Biomedical Imaging and Bioengineering

Eunice Kennedy Shriver National Institute of Child Health and Human Development
National Institute of Dental and Craniofacial Research

National Institute of Environmental Health Sciences

National Institute of Mental Health

National Institute of Nursing Research

Office of Disease Prevention

National Institute of General Medical Sciences

[PAR-15-047](#) (R21)

[PAR-15-048](#) (R01)

Application Due Date: [Standard due dates apply](#)

International Research Collaboration on Drug Abuse and Addiction Research

National Institute on Drug Abuse

[PA-15-141](#) (R03)

[PA-15-142](#) (R01)

[PA-15-143](#) (R21)

Application Due Date: [Standard due dates apply](#)

Pilot and Feasibility Studies in Preparation for Drug and Alcohol Abuse Prevention Trials (R34)

National Institute on Drug Abuse

National Institute on Alcohol Abuse and Alcoholism

[PA-15-177](#)

Application Due Date: [Standard due dates apply](#)

Screening and Brief Alcohol Interventions in Underage and Young Adult Populations

National Institute on Alcohol Abuse and Alcoholism

[PA-15-294](#) (R21)

[PA-15-295](#) (R01)

[PA-15-296](#) (R03)

Application Due Date: [Standard due dates apply](#)

Alcohol Use Disorders: Behavioral Treatment, Services and Recovery Research

National Institute on Alcohol Abuse and Alcoholism

[PA-15-299](#) (R01)



Research Opportunities, cont.

[PA-15-300](#) (R03)

[PA-15-301](#) (R21)

Application Due Date: [Standard due dates apply](#)

Research on the Mechanisms and/or Behavioral Outcomes of Multisensory Processing (R01)

National Institute on Aging

National Center for Complementary and Integrative Health

National Cancer Institute

National Eye Institute

National Institute of Child Health and Human Development

National Institute on Drug Abuse

National Institute on Deafness and Other Communication Disorders

National Institute of Dental and Craniofacial Research

National Institute of Neurological Disorders and Stroke

Office of Behavioral and Social Sciences Research

Office of Research on Women's Health

[PA-15-347](#)

Application Due Date: [Standard due dates apply](#)

Major Opportunities for Research in Epidemiology of Alzheimer's Disease and Cognitive Resilience (R01)

National Institute on Aging

[PAR-15-356](#)

Application Due Date: [Standard due dates apply](#)

AIDS-Science Track Award for Research Transition (R03)

National Institute on Drug Abuse

[PA-15-290](#)

Application Due Date: [Standard AIDS due dates apply](#)

HIV/AIDS High Priority Drug Abuse Research (R01)

National Institute on Drug Abuse

[PAS-16-018](#)

Application Due Date: [Standard AIDS due dates apply](#)

BRAIN Initiative: Next-Generation Invasive Devices for Recording and Modulation in the Human Central Nervous System (U44)

National Institute of Neurological Disorders and Stroke

National Center for Complementary and Integrative Health

National Eye Institute

National Institute on Aging

National Institute on Alcohol Abuse and Alcoholism

National Institute of Biomedical Imaging and Bioengineering

Eunice Kennedy Shriver National Institute of Child Health and Human Development

National Institute on Drug Abuse

National Institute on Deafness and Other Communication Disorders

[RFA-NS-16-011](#)

Application Due Date: 04/26/16

BRAIN Initiative: SBIR Direct to Phase II Next-Generation Invasive Devices for Recording and Modulation in the Human Central Nervous System (U44)

National Institute of Neurological Disorders and Stroke

National Institute on Aging

National Institute on Alcohol Abuse and Alcoholism

National Institute of Biomedical Imaging and Bioengineering

Eunice Kennedy Shriver National Institute of Child Health and Human Development

National Institute on Drug Abuse

National Center for Complementary and Integrative Health

[RFA-NS-16-018](#)

Application Due Date: 04/26/16

Services Planning Research in the Appalachian Region to Address Adverse Health Consequences Associated with Increased Opioid Injection Drug Use (R03)

National Institute on Drug Abuse

[RFA-DA-16-015](#)

Application Due Date: 04/28/16

Small Vessel Vascular Contributions to Cognitive Impairment and Dementia (VCID) Biomarkers Development Projects

National Institute of Neurological Disorders and Stroke

National Institute on Aging

[RFA-NS-16-019](#) (U24)

[RFA-NS-16-020](#) (UH2/UH3)

Application Due Date: 05/10/16

Pre-application: Stimulating Peripheral Activity to Relieve Conditions (SPARC): Comprehensive Functional Mapping of Neuroanatomy and Neurobiology of Organs (OT1)

National Institutes of Health

[RFA-RM-15-003](#)

Application Due Date: 05/16/16 and bi-monthly through 2018

Reductions in Illicit Drug Use and Functional Outcomes (R21/R33)

National Institute on Drug Abuse

[PA-15-099](#)

Application Due Date: [Standard due dates apply](#)

(Letter of Intent required, Lol due 05/16/16 for 06/16/16 deadline)

Ruth L. Kirschstein National Research Service Award Institutional Predoctoral Training Program in the Neurosciences (T32)

National Institute of Neurological Disorders and Stroke

National Institute on Aging

National Institute on Alcohol Abuse and Alcoholism

Eunice Kennedy Shriver National Institute of Child Health and Human Development

National Institute on Drug Abuse

National Institute of General Medical Sciences

National Institute of Mental Health

[PAR-15-178](#)

Application Due Date: 05/25/16, plus additional deadlines through 2017

The Neural Mechanisms of Multi-Dimensional Emotional and Social Representation



Research Opportunities, cont.

National Institute of Mental Health

[RFA-MH-17-300](#) (R01)

[RFA-MH-17-305](#) (R21)

Application Due Date: 06/03/16

Understanding Factors in Infancy and Early Childhood (Birth to 24 months) That Influence Obesity Development

National Institute of Diabetes and Digestive and Kidney Diseases

Eunice Kennedy Shriver National Institute of Child Health and Human Development
Office of Behavioral and Social Sciences Research

National Institute on Minority Health and Health Disparities

[PAR-14-323](#) (R01)

Application Due Dates: 06/05/16, plus additional deadlines through 2017

Methods for Prevention Packages Program IV (MP3 IV) (R01)

National Institute of Allergy and Infectious Diseases

National Institute of Mental Health
[PAR-16-124](#)

Application Due Date: 06/07/16, plus additional deadlines through 2018

Pragmatic Strategies for Assessing Psychotherapy Quality in Practice (R01)

National Institute of Mental Health
[RFA-MH-17-500](#)

Application Due Dates: 06/08/16

Fundamental Mechanisms of Affective and Decisional Processes in Cancer Control (U01)

National Cancer Institute
[PAR-14-067](#)

Application Due Dates: 06/10/16 or 10/14/16

Exploratory Clinical Trials of Mind and Body Interventions for NCCAM High Priority Research Topics (R34)

National Center for Complementary and Integrative Health

[PAR-14-182](#)

Application Due Dates: 06/10/16, plus

additional deadlines through 2017

NIDA Mentored Clinical Scientists Development Program Award in Drug Abuse and Addiction (K12)

National Institute on Drug Abuse

[PAR-15-119](#)

Application Due Date: 06/12/16, plus additional deadlines through 2017 (Letter of Intent required 05/12/16 for 06/12/16 deadline)

Exploratory Clinical Trials of Novel Interventions for Mental Disorders

National Institute of Mental Health (R33)

[RFA-MH-16-400](#)

Application Due Date: 06/15/16, plus additional deadlines through 2016

Pilot Effectiveness Trials for Treatment, Preventive and Services Interventions (R34)

National Institute of Mental Health
[RFA-MH-16-410](#)

Application Due Date: 06/15/16, plus additional deadlines through 2016

Clinical Trials to Test the Effectiveness of Treatment, Preventive, and Services Interventions

National Institute of Mental Health
[RFA-MH-16-415](#) (Collaborative R01)

[RFA-MH-16-420](#) (R01)

Application Due Date: 06/15/16, plus additional deadlines through 2016

Confirmatory Efficacy Clinical Trials of Non-Pharmacological Interventions for Mental Disorders (R01)

National Institute of Mental Health
[RFA-MH-16-425](#)

Application Due Dates: 06/15/16 and 10/14/16

Novel Assays to Address Translational Gaps in Treatment Development (UG3/UH3)

National Institute of Mental Health
[PAR-16-065](#)

Application Due Date: 06/23/16, plus

additional deadlines through 2018

Biomedical and Behavioral Research Innovations to Ensure Equity (BRITE) in Maternal and Child Health (R15)

National Institute of Child Health and Human Development

[PAR-15-319](#)

Application Due Date: 07/07/16, plus additional due dates through 2017

Standard NIH due dates for all activity codes including new submissions, renewals, and resubmissions can be found [here](#).

National Science Foundation

Mid-2016 deadlines begin in July; check with Phil for details.

American Psychological Foundation

David Wechsler Early Career Grant for Innovative Work in Cognition

[APF Guidelines Here](#)

Application Due Date: 06/15/16

American Psychological Association

Psi Chi Faculty Advisor Research Grants

[APA Guidelines Here](#)

Application Due Date: 06/01/16

Russel Sage Foundation

Social Inequality (plus additional programs)

Russell Sage Foundation

[Funding Opportunity Information](#)

Letter of Inquiry Due Date: 06/15/16

Application Due Date: 08/15/16

Letter of Intent Due Date: 03/31/16





Research Opportunities for Graduate Students & Postdocs

If you are interested in applying for any of these opportunities, contact Phil Lee, Grants Management Officer, at palee@email.unc.edu.



National Institutes of Health

Ruth L. Kirschstein National Research Service Awards (NRSA)

Check guidelines for list of participating institutes

[PA-14-147](#) (F-31 Predoctoral)

[PA-14-148](#) (F-31D Predoctoral Diversity)

[PA-14-149](#) (F-32 Postdoctoral)

Application Due Date: [Standard due dates apply](#)

NIH Pathway to Independence Award (K99/R00)

Check guidelines for list of participating institutes

[PA-16-077](#)

Application Due Date: [Standard due dates apply](#)

Aging Research Dissertation Awards to Increase Diversity (R36)

National Institute on Aging

[PAR-13-152](#)

Application Due Date: [Standard due dates apply](#)

Drug Abuse Dissertation Research (R36)
National Institute on Drug Abuse

[PAR-13-182](#)

Application Due Date: [Standard due dates apply](#)

Mental Health Research Dissertation Grant to Enhance Workforce Diversity (R36)

National Institute of Mental Health

[PAR-15-181](#)

Application Due Date: 04/22/16, plus additional deadlines through 2018

NIH Director's Early Independence Awards (DP5)

National Institutes of Health

[RFA-RM-16-006](#)

Application Due Date: 09/12/16 (Note: Only two applications will be allowed from UNC; check with Phil early about nominating process.)

American Psychological Association

APA Division 36 Student Research Award

[APA Guidelines Here](#)

Application Due Date: 06/10/16

APAGS/Psi Chi Junior Scientist Fellowship

[APA Guidelines Here](#)

Application Due Date: 06/30/16

American Psychological Foundation

F.J. McGuigan Dissertation Award

[APF Guidelines here](#)

Application Due Date: 06/01/16

Benton-Meier Scholarships

[APF Guidelines Here](#)

Application Due Date: 06/01/16

David Wechsler Early Career Grant for Innovative Work in Cognition

[APF Guidelines Here](#)

Application Due Date: 06/15/16

Kenneth B. and Mamie P. Clark Fund

[APF Guidelines Here](#)

Application Due Date: 06/15/16

APF Graduate Student Scholarships

[APF Guidelines Here](#)

Application Due Date: 06/30/16

Department of Psychology

235 E. Cameron Avenue
Davie Hall | CB 3270
Chapel Hill, NC 27599-3270
(919) 843-5467

[Email your submissions](#) for the next Department Newsletter!

Visit our [Department Newsletter Archive](#) for past newsletters.