

January
2016

THE UNIVERSITY
of NORTH CAROLINA
at CHAPEL HILL



Psychology & Neuroscience Department Newsletter

Volume 5 | Issue 5

January 2016

THIS ISSUE

Disting. Alumnus: Page 2
New Fac & Staff: Page 2
Dept Colloquium: Page 3
Dept Events: Page 3
Research Opps: Page 4

EVENTS

Faculty Meeting
February 3 @ 3:30

2016 Distinguished
Alum Address:
Dr. Ronald Haskins
February 24 @ 3:30

2016 Dept Colloquium:
Dr. Ernest Davenport
March 23 @ 3:30



Department News

Rachel Greene and Maya Mosner, graduate students in Clinical Psychology, are the recipients of the 2015 Autism Science Foundation Accelerator Grant. Rachel's project is titled "The Role of Oxytocin Treatment on Brain Connectivity in Autism" and Maya's project, "Using Alternative Data Collection to Evaluate the Effects of Social Skills Treatment." Congratulations!



Several members of the Department won distinguished teaching awards through the Office of the Executive Vice Chancellor and Provost! Dr. Daniel Bauer won the Distinguished Teaching Award for Post-Baccalaureate Instruction, Dr. Kristen Lindquist won the Johnston Teaching Excellence Award, and Noah Greifer, a graduate student in Quantitative Psychology, won the Tanner Award for Excellence in Undergraduate Teaching by a Graduate Teaching Assistant. They will be recognized at half-time of the UNC-Pittsburgh basketball game on February 14.



Dr. Alex Marshall, a postdoctoral fellow in Behavioral Neuroscience, is the recipient of the 2015 Leadership Award from the Office of Postdoctoral Affairs. This award recognizes postdoctoral fellows for exemplary leadership qualities. Congratulations, Alex!



Heidi Vuletich, a graduate student in Developmental and Social Psychology, is one of 77 finalists for the Paul and Daisy Soros Fellowships for New Americans. Heidi will fly to LA in January to complete the interview stage of the selection process. Congratulations to Heidi, and good luck!



2016 Distinguished Alumnus

The Colloquium Committee in the Department of Psychology and Neuroscience is pleased to announce that the recipient of this year's Distinguished Alumnus Award is **Dr. Ronald Haskins**, who earned his Ph.D. in the Developmental Psychology Program. He was a senior researcher at the Frank Porter Graham Child Development Center at UNC Chapel Hill from 1981 to 1985.



A former senior White House and congressional advisor on welfare issues, Dr. Haskins co-directs the Brookings Center on Children and families and Budgeting for National Priorities Project. An expert on preschool, foster care, and poverty, he was instrumental in the 1996 overhaul of national welfare policy. He is also a contributor to the Evidence Speakers paper project.

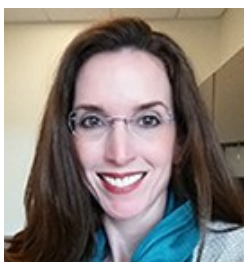
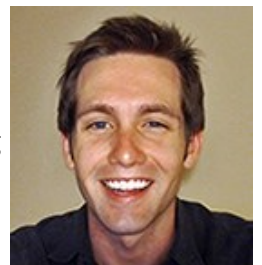
His areas of expertise include welfare reform, child care, child support, marriage, child protection, and budget and deficit issues. In 1997, Dr. Haskins was selected by the *National Journal* as one of the 100 most influential people in the federal government. Dr. Haskins' talk, entitled "**Social Science Rising: The Growing Influence of Evidence in Policy Development**" is scheduled for Wednesday, February 24th from 3:30 to 4:30 pm in Davie Hall.

Welcome to New Faculty and Staff!



Welcome to Dr. Jessica Cohen, our new Assistant Professor in Cognitive Psychology! She received her Ph.D. in Cognitive Neuroscience/Psychology from UCLA and completed post-doctoral fellowships at UC Berkeley and Johns Hopkins before joining us. Her research uses behavioral, neuroimaging, and clinical approaches taken from neuroscience, psychology, and mathematics to investigate how functional brain networks interact and reconfigure in different contexts.

Chase Debnam joined the Department in December as our new Accounting Manager. Chase graduated from UNC Chapel Hill in 2010 and has been working in the accounting field at UNC since 2013. He also enjoys cooking, piano, and books, and recently published his first short story. Welcome, Chase!



Melanie Egts also started in December and is the Department's new Human Resources Specialist. She previously worked in human resources at UNC Health Care for five years and at the Children's Specialty Clinics for eight years. She is a native of North Carolina and grew up in Orange County. Melanie and her husband have two elementary-age daughters. We're so glad Melanie has joined our team!

Please stop by to greet Dr. Cohen and our new staff, Chase and Melanie! Dr. Cohen is temporarily located in Davie 335A, Chase in Davie 206, and Melanie in Davie 204.



2016 Department Colloquium

Our 2016 Department Colloquium features **Dr. Ernest C. Davenport**. Dr. Davenport is a professor in the Quantitative Methods in Education Program within the College of Educational Psychology and Human Development at the University of Minnesota.

He received a B.S. degree in Psychology and Computer Science from Duke University and his Masters and Doctoral degrees from the University of North Carolina Chapel Hill.

Dr. Davenport has had a long-standing role as the Director of an ACT/SAT review course for at-risk students and was one of the founders of Minnesota's Office of Educational Accountability (OEA), which was created to assist with educational accountability in the state.

His research primarily focuses on the study of measurement to better understand achievement gaps, with special interests in the relationship between student experiences and academic success.

Dr. Davenport will present **"Reliability, Internal Consistency, and Dimensionality in Psychological Assessment"** for our 2016 Department Colloquium. Join us Wednesday, March 23 at 3:30 pm in Davie Hall.

Departmental Events

Behavioral Neuroscience Seminars

Davie 302, 12:30—1:45 pm

- 2/2 Saleem Nicola, Ph.D.**
A Nucleus Accumbens-Dependent Neural Mechanism for Physical Attraction
- 2/16 Rick Meeker, Ph.D.**
HIV, Neuroinflammation, and the Promise of Novel Neurotrophin Therapies

Clinical Lunch Series

Davie 261, 12:00—1:00 pm

- 2/5 Paschal Sheeran, Ph.D.**
Self-Regulation of Affect and Behavior: the Benefits of If-Then Plans
- 2/19 Carol Ripley-Moffitt, MDiv**
Health Disparities in Tobacco Addiction
- 2/26 David Penn, Ph.D.**
Early Intervention for Psychosis

Cognitive Tea Talks

Davie 347, 12:30-1:30 pm

- 1/28 Kyle Burger, Ph.D.**
Causes and Consequences of Excess Hedonically Motivated Food Intake
- 2/4 Jessica Cohen, Ph.D.**
Segregation and Integration of Functional Brain Networks in Health and Disease

Developmental Lunch Series

Davie 347, 12:00—1:00 pm

- 1/27 Hillary Langley, Ph.D.**
Center for Dev. Science
UNC Chapel Hill
- 2/3 Barbara Goldman, Ph.D.**
FPG Child Develop Institute
UNC Chapel Hill
- 2/10 Peg Burchinal, Ph.D.**
FPG Child Develop Institute
Duke University

Quantitative Forums

Davie 347, 12:00—1:00 pm

- 2/1 Kenneth Bollen, Ph.D.**
Psychology & Neuroscience
UNC Chapel Hill
- 2/8 Anne Gilliliand, Ph.D.**
UNC Chapel Hill Libraries
- 2/15 Daniel Bauer, Ph.D.**
Psychology & Neuroscience
UNC Chapel Hill

Social ORGs

Davie 302, 11:30—1:00pm

- 2/1 Charlotte Boettiger, Ph.D.**
Psychology & Neuroscience
UNC Chapel Hill
- 2/8 Christine Rini, Ph.D.**
UNC Gillings School of
Global Public Health
- 2/15 Olivia O'Neill, Ph.D.**
School of Business
George Mason University



Research Opportunities for Faculty

If you are interested in applying for any of these opportunities, contact Phil Lee, Grants Management Officer, at palee@email.unc.edu.



National Institutes of Health

Behavioral & Integrative Treatment Development Program

National Institute on Drug Abuse
National Institute on Alcohol Abuse and Alcoholism
Office of Behavioral and Social Sciences Research

[PA-16-072](#) (R01)

[PA-16-073](#) (R34)

[PA-16-074](#) (R03)

Application Due Date: [Standard due dates apply](#)

Clinical Development of Minimally-Invasive Bioassays to Support Outpatient Clinical Trials of Therapeutics for Substance Use Disorders

National Institute on Drug Abuse

[PA-16-075](#) (R21)

[PA-16-076](#) (R01)

Application Due Date: [Standard due dates apply](#)

Behavioral Science Track Award for Rapid Transition (B/Start)(R03)

National Institute on Drug Abuse

[PAR-16-071](#)

Application Due Date: [Standard due dates apply](#)

Drug Abuse Prevention Intervention Research

National Institute on Drug Abuse

[PA-15-080](#) (R21)

[PA-15-081](#) (R03)

[PA-15-082](#) (R01)

Application Due Date: [Standard due dates apply](#)

Mechanistic Studies of Pain and Alcohol

Dependence

National Institute on Alcohol Abuse and Alcoholism

National Institute on Drug Abuse

[PA-15-026](#) (R01)

Application Due Date: [Standard due dates apply](#)

Epidemiology of Drug Abuse

National Institute on Drug Abuse

[PA-15-001](#) (R21)

[PA-15-002](#) (R03)

[PA-15-003](#) (R01)

Application Due Date: [Standard due dates apply](#)

Biobehavioral and Technological Interventions to Attenuate Cognitive Decline in Individuals with Cognitive Impairment or Dementia

National Institute of Nursing Research
National Institute on Aging

[PA-15-015](#) (R21)

[PA-15-016](#) (R15)

[PA-15-017](#) (R01)

Application Due Date: [Standard due dates apply](#)

Women & Sex/Gender Differences in Drug and Alcohol Abuse/Dependence

National Institute on Drug Abuse

National Institute on Alcohol Abuse and Alcoholism

[PA-14-036](#) (R21)

[PA-14-037](#) (R03)

[PA-14-038](#) (R01)

Application Due Date: [Standard due dates apply](#)

Substance Use and Abuse, Risky Decision Making and HIV/AIDS

National Institute on Drug Abuse

National Institute on Alcohol Abuse and Alcoholism

[PA-14-061](#) (R01)

[PA-14-062](#) (R21)

[PA-14-063](#) (R03)

Application Due Date: [Standard due dates apply](#)

Modeling Social Behavior (R01)

National Cancer Institute

National Institute on Alcohol Abuse and Alcoholism

National Institute of Biomedical Imaging and Bioengineering

Eunice Kennedy Shriver National Institute of Child Health and Human Development

National Institute of Mental Health

National Center for Complementary and Integrative Health

[PAR-13-374](#)

Application Due Date: [Standard due dates apply](#)

Neuroscience Research on Drug Abuse

National Institute on Drug Abuse

[PA-13-338](#) (R01)

[PA-13-337](#) (R21)

[PA-13-336](#) (R03)

Application Due Date: [Standard due dates apply](#)

Implication of New Digital Media Use for Underage Drinking, Drinking-Related Behaviors, and Prevention Research

National Institute on Alcohol Abuse and Alcoholism

[PA-13-262](#) (R01)

[PA-13-263](#) (R21)

Application Due Date: [Standard due dates apply](#)

Effects of Cannabis Use and Cannabinoids on the Developing Brain

National Institute on Drug Abuse

[PA-14-163](#) (R01)

[PA-14-162](#) (R21)

[PA-14-164](#) (R03)

Application Due Date: [Standard due dates apply](#)

Healthy Habits: Timing for Developing Sustainable Healthy Behaviors in Children and Adolescents

National Institute of Nursing Research
Office of Behavioral and Social Sciences Research

[PA-14-177](#) (R01)

[PA-14-176](#) (R21)



Research Opportunities, cont.

Application Due Date: [Standard due dates apply](#)

Clinical Studies of Mental Illness Not Involving Treatment Development, Efficacy, or Effectiveness Trials National Institute of Mental Health

[PAR-14-165](#) (Collaborative R01)

Application Due Date: [Standard due dates apply](#)

Lab to Marketplace: Tools for Brain and Behavioral Research

National Institute of Mental Health
National Institute of Deafness and Other Communication Disorders

[PA-14-250](#) (R43/R44)

Application Due Date: [Standard due dates apply](#)

Notice of Information on High-Priority Research Areas to Understand and Reduce Mental Health Disparities

National Institutes of Mental Health
[NOT-MH-14-033](#) (R01, R21, and other opportunities)

Application Due Date: [Standard due dates apply](#)

Advancing Interventions to Improve Medication Adherence

Office of Behavioral and Social Sciences Research
National Eye Institute
National Heart, Lung, and Blood Institute
National Institute on Alcohol Abuse and Alcoholism

National Institute on Deafness and Other Communication Disorders
National Institute of Mental Health
National Institute of Nursing Research
National Institute on Drug Abuse
National Cancer Institute

[PA-14-335](#) (R21)

Application Due Date: [Standard due dates apply](#)

BRAIN Initiative: Development, Optimization, and Validation of Novel Tools and Technologies for Neuroscience Research

National Institute of Mental Health
National Institute of Aging
National Institute on Alcohol Abuse and Alcoholism
National Institute on Drug Abuse
National Institute of Neurological Disorders and Stroke
National Institute on Deafness and Other Communication Disorders

[PAR-15-090](#) (STTR) (R41/R42)

[PAR-15-091](#) (SBIR) (R43/R44)

Application Due Date: [Standard due dates apply](#)

Functional Wellness in HIV: Maximizing the Treatment Cascade

National Institute of Nursing Research
Office of Behavioral and Social Sciences Research

[PA-15-133](#) (R01)

[PA-15-134](#) (R21)

Application Due Date: [Standard due dates apply](#)

Systems Science and Health in the Behavioral and Social Sciences

Office of Behavioral and Social Sciences Research
National Cancer Institute
National Institute on Aging
National Institute on Alcohol Abuse and Alcoholism
National Institute of Biomedical Imaging and Bioengineering
Eunice Kennedy Shriver National Institute of Child Health and Human Development
National Institute of Dental and Craniofacial Research
National Institute of Environmental Health Sciences
National Institute of Mental Health
National Institute of Nursing Research
Office of Disease Prevention
National Institute of General Medical Sciences

[PAR-15-047](#) (R21)

[PAR-15-048](#) (R01)

Application Due Date: [Standard due dates apply](#)

International Research Collaboration on Drug Abuse and Addiction Research

National Institute on Drug Abuse

[PA-15-141](#) (R03)

[PA-15-142](#) (R01)

[PA-15-143](#) (R21)

Application Due Date: [Standard due dates apply](#)

Pilot and Feasibility Studies in Preparation for Drug and Alcohol Abuse Prevention Trials (R34)

National Institute on Drug Abuse
National Institute on Alcohol Abuse and Alcoholism

[PA-15-177](#)

Application Due Date: [Standard due dates apply](#)

Screening and Brief Alcohol Interventions in Underage and Young Adult Populations

National Institute on Alcohol Abuse and Alcoholism

[PA-15-294](#) (R21)

[PA-15-295](#) (R01)

[PA-15-296](#) (R03)

Application Due Date: [Standard due dates apply](#)

Alcohol Use Disorders: Behavioral Treatment, Services and Recovery Research

National Institute on Alcohol Abuse and Alcoholism

[PA-15-299](#) (R01)

[PA-15-300](#) (R03)

[PA-15-301](#) (R21)

Application Due Date: [Standard due dates apply](#)

Research on the Mechanisms and/or Behavioral Outcomes of Multisensory Processing (R01)

National Institute on Aging
National Center for Complementary and Integrative Health
National Cancer Institute
National Eye Institute
National Institute of Child Health and Human Development
National Institute on Drug Abuse



Research Opportunities, cont.

National Institute on Deafness and Other Communication Disorders
National Institute of Dental and Craniofacial Research
National Institute of Neurological Disorders and Stroke
Office of Behavioral and Social Sciences Research
Office of Research on Women's Health
[PA-15-347](#)
Application Due Date: [Standard due dates apply](#)

Major Opportunities for Research in Epidemiology of Alzheimer's Disease and Cognitive Resilience (R01)
National Institute on Aging
[PAR-15-356](#)
Application Due Date: [Standard due dates apply](#)

AIDS-Science Track Award for Research Transition (R03)
National Institute on Drug Abuse
[PA-15-290](#)
Application Due Date: [Standard AIDS due dates apply](#)

HIV/AIDS High Priority Drug Abuse Research (R01)
National Institute on Drug Abuse
[PAS-16-018](#)
Application Due Date: [Standard AIDS due dates apply](#)

Administrative Supplements for Research on Sex/Gender Differences (Admin Supp)
Office of Research on Women's Health and the National Institutes of Health
[PA-16-066](#)
Application Due Date: **03/04/16**

Applied Research Toward Zero Suicide Healthcare Systems (R01)
National Institute of Mental Health
[RFA-MH-16-800](#)
Application Due Date: **03/04/16**

Novel Assays to Address Translational Gaps in Treatment Development (UG3/UH3)
National Institute of Mental Health
[PAR-16-065](#)
Application Due Date: **03/08/16, plus additional deadlines through 2018**

BRAIN Initiative: New Concepts and Early - Stage Research for Large - Scale Recording and Modulation in the Nervous System (R21)
National Eye Institute
National Center for Complementary and Integrative Health
National Institute on Aging
National Institute on Alcohol Abuse and Alcoholism
National Institute of Biomedical Imaging and Bioengineering
Eunice Kennedy Shriver National Institute of Child Health and Human Development
National Institute on Drug Abuse
National Institute on Deafness and Other Communication Disorders
National Institute of Mental Health
National Institute of Neurological Disorders and Stroke
[RFA-EY-16-001](#)
Application Due Date: **03/15/16**

Pre-application: Stimulating Peripheral Activity to Relieve Conditions (SPARC):

Comprehensive Functional Mapping of Neuroanatomy and Neurobiology of Organs (OT1)
National Institutes of Health
[RFA-RM-15-003](#)
Application Due Date: **03/15/16 and bi-monthly through 2018**

Exploratory Studies of Smoking Cessation Interventions for People with Schizophrenia
National Institute on Drug Abuse
National Institute of Mental Health
National Cancer Institute
National Institute on Alcohol Abuse and Alcoholism
[PAR-14-230 \(R21/R33\)](#)
Application Due Date: **04/15/16, plus additional deadlines through 2017**

BRAIN Initiative: Next-Generation Invasive Devices for Recording and Modulation in the Human Central Nervous System (U44)
National Institute of Neurological Disorders and Stroke
National Center for Complementary and Integrative Health
National Eye Institute
National Institute on Aging
National Institute on Alcohol Abuse and Alcoholism
National Institute of Biomedical Imaging and Bioengineering

Eunice Kennedy Shriver National Institute of Child Health and Human Development
National Institute on Drug Abuse
National Institute on Deafness and Other Communication Disorders
[RFA-NS-16-011](#)
Application Due Date: **04/26/16**

BRAIN Initiative: SBIR Direct to Phase II Next-Generation Invasive Devices for Recording and Modulation in the Human Central Nervous System (U44)
National Institute of Neurological

Department of Psychology
235 E. Cameron Avenue
Davie Hall | CB 3270
Chapel Hill, NC 27599-3520
(919) 843-5467

[Email your submissions](#) for the next Department Newsletter!

Visit our [Department Newsletter Archive](#) for past newsletters.



Research Opportunities, cont.

Disorders and Stroke

National Institute on Aging
National Institute on Alcohol Abuse and Alcoholism
National Institute of Biomedical Imaging and Bioengineering
Eunice Kennedy Shriver National Institute of Child Health and Human Development
National Institute on Drug Abuse
National Center for Complementary and Integrative Health

[RFA-NS-16-018](#)

Application Due Date: 04/26/16

Reductions in Illicit Drug Use and Functional Outcomes (R21/R33)

National Institute on Drug Abuse

[PA-15-099](#)

Application Due Date: [Standard due dates apply](#)

(Letter of Intent required, LoI due 05/16/16 for 06/16/16 deadline)

Ruth L. Kirschstein National Research Service Award Institutional Predoctoral Training Program in the Neurosciences (T32)

National Institute of Neurological Disorders and Stroke

National Institute on Aging

National Institute on Alcohol Abuse and

Alcoholism

Eunice Kennedy Shriver National Institute of Child Health and Human Development
National Institute on Drug Abuse
National Institute of General Medical Sciences

National Institute of Mental Health

[PAR-15-178](#)

Application Due Date: 05/25/16, plus additional deadlines through 2017

Standard NIH due dates for all activity codes including new submissions, renewals, and resubmissions can be found [here](#).

National Science Foundation

Mid-2016 deadlines begin in July; check with Phil for details.

American Psychological Foundation

Esther Katz Rosen Fund Grants

[APF Guidelines Here](#)

Application Due Date: 03/01/16

Wayne F. Placek Grants

[APF Guidelines Here](#)

Application Due Date 03/01/16

Human Frontier

Science Program

Human Frontier Science Program – Program Grants

[HFSP Guidelines Here](#)

Letter of Intent Due Date: 03/31/16

Human Frontier Science Program – 2017 Young Investigators' Grants

[HFSP Guidelines Here](#)

Letter of Intent Due Date: 03/31/16

University of North Carolina

NC TraCS \$5k-\$50k Grants (50% matching required)

[TraCS \\$5k-\\$50k Guidelines](#)

Application Due Date: 02/09/16, plus additional dates throughout 2016

NC TraCS \$2k Award

[TraCS \\$2k Guidelines](#)

Application Due Dates: 02/16/16, plus monthly deadlines throughout 2016

Research Opportunities for Graduate Students & Postdocs

If you are interested in applying for any of these opportunities, contact Phil Lee, Grants Management Officer, at palee@email.unc.edu.



National Institutes of Health

Ruth L. Kirschstein National Research Service Awards (NRSA)

Check guidelines for list of participating

institutes

[PA-14-147](#) (F-31 Predoctoral)

[PA-14-148](#) (F-31D Predoctoral Diversity)

[PA-14-149](#) (F-32 Postdoctoral)

Application Due Date: [Standard due dates apply](#)

NIH Pathway to Independence Award (K99/R00)

Check guidelines for list of participating institutes

[PA-16-077](#)

Application Due Date: [Standard due dates apply](#)

Aging Research Dissertation Awards to Increase Diversity (R36)

National Institute on Aging

[PAR-13-152](#)

Application Due Date: [Standard due dates apply](#)

Drug Abuse Dissertation Research (R36)

National Institute on Drug Abuse



Research Opportunities, cont.

[PAR-13-182](#)

Application Due Date: [Standard due dates apply](#)

Mental Health Research Dissertation Grant to Enhance Workforce Diversity (R36)

National Institute of Mental Health

[PAR-15-181](#)

Application Due Date: 04/22/16, plus additional deadlines through 2018

American Psychological Association

Dissertation Research Grant in Developmental Psychology

[APA Guidelines Here](#)

Application Due Date: 03/15/15

American Psychological Foundation

Esther Katz Rosen Fund Grants

[APF Guidelines Here](#)

Application Due Date: 03/01/16

Wayne F. Placek Grants

[APF Guidelines Here](#)

Application Due Date 03/01/16

APF Visionary Grants

[APF Guidelines Here](#)



Steve Reznick's Induction into the Order of the Long Leaf Pine: November 2015

