



The University of  
North Carolina at  
Chapel Hill

December 2013

Fall Semester

# Psychology Undergraduate Newsletter

## Greetings Psychology Majors!

### Points of Interest:

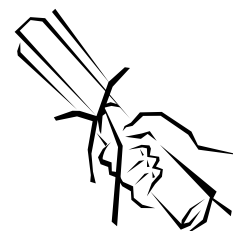
- ◆ Spring 2014 Information
  - ◆ Employment & Volunteer Opportunities
- ◆ Summer Opportunities
  - ◆ Conferences
- ◆ Graduate Programs



Need to speak with an  
academic advisor in  
Psychology?

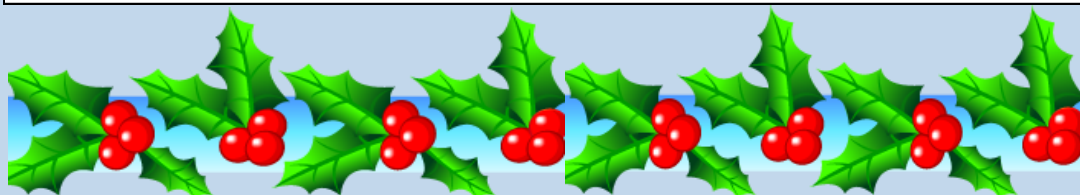
Don't forget that advisor  
contact info and office hours  
are posted on the website in  
the [undergraduate section](#).

*Hearty congratulations to our  
December graduates, and best  
wishes to everyone for the  
semester break!*



### A note about Spring courses:

- We were pleased to be able to open some additional upper level courses in the last two weeks. As of today (December 9) a few seats are still available in a section of PSYC 504 (Health Psychology), and waitlist seats have opened in several other classes.
- We realize that many of you register for more classes than you intend to take, permitting you greater flexibility to adjust to work schedules and to take the courses that interest you the most. If you are currently registered for more hours than you intend to take in the Spring semester, please consider dropping a class or removing yourself from the wait list rather than waiting. Your fellow students will be most appreciative!





## More Information about Spring 2014:



- 1) During the first two weeks of enrollment, **between November 5th, 2013 and November 19th 2013**, all undergraduate psychology courses numbered 200 and above, including upper level undergraduate courses, had a select number of seats available per section for nonpsychology majors (roughly 10%). These restrictions were lifted on the morning of Wednesday, November 20, 2013 and will be reinstated the week before classes start, from **December 30th, 2013 - January 9th, 2014**.
- 2) Cognitive science minors will continue to have unrestricted access to PSYC courses related to their minor during registration restriction periods.
- 3) Psychology Majors:  
We have been working hard to meet the student demand for all of our courses. If you are concerned about finishing your psychology major in time to graduate, here are some suggestions:
  - First, monitor ConnectCarolina frequently in the coming weeks
  - Second, note that only two upper-level courses are required for a psychology major and seniors have priority in registering for them
  - Third, consider taking summer school; we will offer several upper-level courses during the summer and often in Maymester as well.
- 4) Our [Departmental Enrollment Policy](#) requires all course registration to be handled on a first come, first-serve basis in the ConnectCarolina system. **Please do not contact the instructors directly**, as the Department does not keep special enrollment lists and no one may be added outright to a course that is already closed in ConnectCarolina. Our students have great success in enrolling in the courses they need, merely by being aware of their registration schedule and by being persistent in ConnectCarolina.
- 5) The waitlists for the Spring 2014 term will remain in place until **January 23rd, 2014** but you will no longer have the ability to add yourself to a waitlist after **December 16th, 2013**. For those of you not on a waitlist, please continue to monitor ConnectCarolina closely to register for your necessary courses.
- 6) If you are a **senior psychology major** planning to graduate in May 2014 and you do not successfully enroll in the courses you need to graduate by **December 16th, 2013** please contact the Psychology Student Services Office at [ctcoffey@unc.edu](mailto:ctcoffey@unc.edu).





**UNC**  
COLLEGE OF  
ARTS & SCIENCES

**JUNIORS:**  
**THINKING ABOUT CONDUCTING**  
**SENIOR HONORS RESEARCH?**

The annual deadline for application to the Senior Honors Program in Psychology is April 1. Plan ahead! More information about the program is available at this url: <http://psychology.unc.edu/undergraduate-studies/honors-program/>

*Please submit the application, essays and faculty recommendation forms to:  
Dana Ripperton in Davie room 235 or via email: [dripper@email.unc.edu](mailto:dripper@email.unc.edu)*

**RESEARCH ASSISTANT, CHILD DEVELOPMENT**  
**LABORATORY AT THE UNIVERSITY OF MARYLAND**



One position is open for a full time research assistant to work on a study funded by the National Institute of Mental Health, the Temperament over Time Project, which involves a longitudinal study of the effects of infant temperament on social and cognitive development. The responsibilities of this position include recruiting, scheduling, and assessing families, infants and children. As well, this person will be trained in electrophysiology, both acquisition and processing. The position will also include supervising and managing a team of undergraduate research assistants, including overseeing data entry, behavioral coding, and time management.

Flexible schedule on evenings and weekends is required. Required education: Bachelor's degree in Psychology, Human Cognitive or Affective Neuroscience, or a social science related field. The position requires excellent attention to detail, organizational skills and people skills. Experience working with or completing research with children is preferred. The job begins as early as June 1, 2014 and requires a two year commitment. Interested individuals should send a cover letter, CV and the names and email addresses of two references to Julie Staples Watson [staples3@umd.edu](mailto:staples3@umd.edu) no later than March 1, 2014. We will review applications on a rolling basis



**IMMEDIATE EMPLOYMENT OPPORTUNITY!**

We are looking for employees, like UNC students, to help work with children and adults with Autism and other intellectual/developmental disabilities. The work is all one on one in the family's home and in the community. You would work with individuals on a variety of skills such as language/communication, self help skills, socialization, gross/fine motor skills, etc. All of our current openings are listed on our website so you are able to choose a schedule and location that works best for you and contact the hiring QP for that position directly! We have many openings in the Durham and Chapel Hill areas! Please look under the "employment" section on the website for more info.

It is a great opportunity for you to help an individual with a disability while adding the experience to your resume. **We also pay competitive rates!!**

If you have any questions, you can check out our website at [www.asmallmiracleinc.com](http://www.asmallmiracleinc.com) or call Beth Gaul at 919-854-4400.

An excellent opportunity to make a difference and gain valuable experience! A Small Miracle, Inc. is an EOE.

\$8.50-\$13 per hour

For more information and to view current openings (listed under the employment section), visit our website

[www.asmallmiracleinc.com](http://www.asmallmiracleinc.com)





## **RESEARCH ASSISTANT POSITION**

The Department of Health and Human Services (DHHS), National Institutes of Health (NIH), National Institute of Mental



**National Institute  
of Mental Health**

Health (NIMH), Emotion and Development Branch, Section on Bipolar Spectrum Disorders (BSD), in Bethesda, Maryland, seeks qualified individuals to fill IRTA (Intramural Research Training Award) positions, with employment starting late May/early June 2014. BSD conducts research on the pathophysiology, treatment, and prevention of mental illness, which begins in childhood. Our particular research interest involves the investigation of pediatric Bipolar Disorder and Disruptive Mood Dysregulation Disorder (DMDD).

The full-time positions require a bachelor's degree and a U.S. citizenship or permanent resident status (resident alien). A minimum commitment of one year is expected; however, a two-year commitment is preferred. Duties and responsibilities include assistance with and participation in all aspects of the research enterprise: patient and normal volunteer screening and recruitment; protocol implementation; data collection, entry, and analysis; and manuscript preparation. This work involves using computer statistical and graphics programs, preparing blood samples, and researching scientific literature. In addition, the position involves regular patient contact during outpatient clinic visits, and with inpatients. IRTAs can observe diagnostic interviews with patients and become familiar with standard psychometric procedures. IRTAs are also involved in training subjects to participate in neuroimaging and analyzing neuroimaging data.

IRTAs will work as part of a multidisciplinary research team including physicians, psychologists, clinical social workers, and psychiatric nurses at the nation's largest medical research center, the National Institutes of Health in Bethesda, Maryland.

Successful applicants will be awarded post-baccalaureate Intramural Research Training Award (IRTA) Fellowships, which provide opportunities for recent college graduates to spend time engaged in biomedical investigation. During their tenure in the program, post-baccalaureate fellows are also expected to initiate the application process for graduate or medical school. Interested individuals should complete the online application found at the following website (link can be found under "Application Procedure"): [https://www.training.nih.gov/programs/postbac\\_irta](https://www.training.nih.gov/programs/postbac_irta)

Interested individuals should also forward a letter of interest and resume to:

Lizzie Harkins  
National Institute of Mental Health  
National Institutes of Health  
Department of Health and Human Services  
[Lizzie.harkins@nih.gov](mailto:Lizzie.harkins@nih.gov)  
301-402-0239



**RESEARCH ASSISTANT POSITION AT  
BOSTON CHILDREN'S HOSPITAL  
(DEVELOPMENTAL COGNITIVE  
NEUROSCIENCE)**



Assist with day-to day operations, functions, development and implementation of research procedures. This includes scheduling of pediatric research subjects, database maintenance, pediatric (including infants) cognitive testing and analyses (psychometrics, psychophysics and functional magnetic imaging), and administrative work (e.g.; preparation of internal review board proposals). Demonstrable pre-existing interest in cognitive neuroscience desired; knowledge of project management, psychological experiment software (e.g.: E-prime or Presentation) or statistics helpful. Advanced computer skills highly desirable but not required. Bachelor's Degree in psychology, education, child development, cognitive science, neuroscience, or related field required. Must be self-motivated and able to work in a fast-paced, changing environment and must like working with infants, children and families. Start date January 15, 2013 or later: two year commitment preferred. Please send application package to

Heather Leosz: [heather.leosz@childrens.harvard.edu](mailto:heather.leosz@childrens.harvard.edu)



**PART-TIME LAB MANAGER, LEARNING RESEARCH AND  
DEVELOPMENT CENTER, UNIVERSITY OF PITTSBURGH**

Dr. Melissa Libertus is seeking a part-time research assistant / lab manager (~20 hrs / wk) for her newly established laboratory at the Learning Research and Development Center at the University of Pittsburgh. Her research focuses on the cognitive development of typically developing infants and children with a special focus on the development of numerical and mathematical thinking.

The ideal candidate would have substantial research experience with infants and children; B.A./B.S. and course work in psychology or related area; excellent interpersonal and organizational skills; and experience using software such as Excel and SPSS. Experience or course-work in computer programming (especially for data analysis in Matlab and/or stimulus presentation in Matlab or Presentation) are especially desirable, but not required. **Start date: January 6th, 2014 or later**

For further information and to apply, please refer to: <https://www.pittsource.com/postings/76394> or contact Dr. Melissa Libertus at [libertus@pitt.edu](mailto:libertus@pitt.edu)

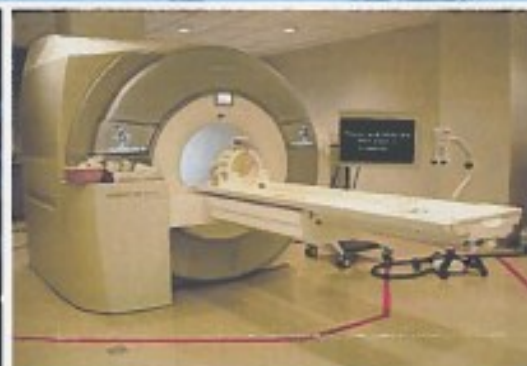




## West Virginia University Center for Neuroscience 2014 Summer Undergraduate Research Internship (SURI) Program May 27 – July 28, 2014

### Program Details

- Program runs from May 27 – July 28, 2014
- Trainees will receive a \$4,000 salary!
- On-campus housing is included!



### APPLY NOW!

Preference will be given to students with a strong background in biology, neuroscience, physics, chemistry, engineering, or psychology, with a 3.0 overall GPA or higher. Students must be enrolled in a US college or university.

Applicants are required to submit:

- Online application
- Curriculum vitae
- Official college transcripts
- 2 letters of recommendation

Apply online at [http://www.hsc.wvu.edu/wvucn/Summer-Internships-\(SURI\)\)](http://www.hsc.wvu.edu/wvucn/Summer-Internships-(SURI)))

The West Virginia University Center for Neuroscience will offer up to 15 summer internships of research-intensive training for qualified undergraduate students who are currently enrolled at a college or university in the US and have completed their second or third year. Research opportunities incorporate molecular- to systems-level analyses of nervous system function, which include projects in the following areas:

- Sensory, cognitive, and behavioral neuroscience
- Neural injury, including stroke
- Neurodegeneration
- Neuropsychiatric diseases

Interns will conduct a well-defined research project under the supervision of a CN faculty member. Accepted students will receive a **\$4,000 salary plus housing in WVU-leased apartments on campus.**

Accepted students will have the opportunity to participate in an intensive and enjoyable research experience. The WVUCN supports broad-based research across over 40 labs housed in modern research facilities. The CN offers state-of-the-art technical capabilities and techniques such as genomics, non-linear optical microscopy, transgenic animal and microarray facilities, 3D tissue analysis, and human neuroimaging using high field MRI and combined PET/CT imaging.

Application deadline is **February 1, 2014**, with the research awards to be announced as early as March 1, 2014. For more information about the program, please visit:

[http://www.hsc.wvu.edu/wvucn/Summer-Internships-\(SURI\)\)](http://www.hsc.wvu.edu/wvucn/Summer-Internships-(SURI)))





## **Serving Individuals with Developmental Disabilities and their Families in Chapel Hill and Orange County**

**We offer home and community based services to help individuals achieve their full potential!**

- Seeking Reliable Direct Care Staff and Back-Up Staff to work with Individuals with Developmental Disabilities
- Must be energetic & willing to engage with the individual
- Provide in-home or community-based services
- Great hands-on experience for any career that involves working with people

### **Required Minimum Qualifications:**

Eighteen (18) years old or older  
High School diploma (or equivalent)  
Effective communication skills  
High level of patience and compassion  
High level of professional conduct  
Certification in CPR/First Aid, Bloodborne Pathogens, Cultural Diversity, and Crisis Intervention (agency will provide if needed)  
Good driving record  
Negative pre-employment drug screening

### **Preferred Qualifications:**

Experience in crisis intervention  
Specific training relevant to the care of individuals with developmental disabilities  
Specific training on childcare and/or child development

**Compensation:** \$9.00-\$10.50 per hour based on education, experience, and services provided

We are also looking for back-up staff! We try to eliminate on-the-spot calls by having back-up staff commit to certain days of the week or times of day

If interested, please visit [www.arcofororange.org/workforus](http://www.arcofororange.org/workforus) to download an application. Once completed, please email to [tnorquest@arcofororange.org](mailto:tnorquest@arcofororange.org)



**SOAR** is an outdoor and experiential education program utilizing 10, 12, 18, and 26 day expedition style adventures with youth diagnosed with Attention Deficit Hyperactivity Disorders and/or Learning Disabilities. Programs are co-ed, students are between the ages of 8 - 25, and groups



**SOAR**  
Success Oriented Achievement Realized  
P.O. Box 388 Balsam, North Carolina 28707  
828-456-3435 Fax: 828-456-3449  
[www.soarnc.org](http://www.soarnc.org)

consist of 7-8 students with 2 staff. Course sites include the North Carolina Smokies, Florida Keys, Wyoming, and California. Activities include rock climbing, whitewater rafting, backpacking, orienteering, llama treks, horsepacking, mountain biking, caving, snorkeling, scuba diving, surfing, and sea kayaking.

## OUTDOOR TRIP LEADER

**RESP:** Supervise a group of 7-8 students (2 staff per group), for 24 hours a day, on 10 to 26 day courses; facilitate a safe and successful experience during the adventure based portions of the course; facilitate the development of life skills, organizational skills, self-esteem, problem-solving strategies, communication techniques, and social skills; assist in developing personal goals for each student; write a comprehensive student evaluation at the end of each course; and act as a role model for students by demonstrating maturity, responsibility, good organizational skills, and professional behavior.

**QUAL:** Minimum 20 years of age (21 and older preferred); 2 years of college experience, in human service related field preferred (e.g., Education, Psychology, Recreation); current first aid and CPR certifications (minimum WFA required for NC, WY, & CA staff; Lifeguard required for FL and CA staff); experience and/or desire to work with LD and AD/HD youth; patience, energy, enthusiasm, flexibility, maturity, and integrity required; experience in and/or desire to learn outdoor adventure activities; strong organizational and time management skills preferred.

## ACTIVITY SPECIALIST

**RESP:** Work with groups of 7-8 students with 2 instructors to facilitate a safe and successful experience during the adventure activity portions of 10 to 26 day courses.

**NC & WY:** set rock climb sites and act as site manager; facilitate and manage high ropes course activities; support caving activities; provide relief to instructors in the field; work with youth in-between courses; support whitewater rafting days; potentially lead mountain biking activities. *WY only – support flat-water canoeing and riflery.*

**FL & CA:** facilitate water-based activities such as sea kayaking and snorkeling; manage logistics for groups during and between courses including managing, repairing, and transporting group gear and purchasing of food during course; provide relief to instructors in the field; facilitate use of ocean water craft such as motor boats or jet skis (FL only); set rock climb sites and act as site manager (CA only).

**QUAL:** Minimum 20 years of age (21 and older preferred). Minimum of 2 years college experience, preferable in Recreation Therapy, Outdoor Recreation, Education, or Psychology. First Aid and CPR required (minimum WFA required for NC, WY, & CA staff). Lifeguard certification required for FL, WY and CA staff. Strong experience required in technical skills such as rock site facilitation and management, ropes course facilitation, white water rafting, caving, mountain biking, or ocean/water activities (FL & CA only). Patience, energy, enthusiasm, flexibility, maturity, and integrity required. Use of personal vehicle required for NC & WY (vehicle stipend provided).

**BENEFITS:** \$2000-\$3000/season, d.o.e. Extensive two-week training. Available May 19 – August 17, 2014, depending on course area.

**TO APPLY:** Complete a staff application on-line at [www.soarnc.org](http://www.soarnc.org) or contact Laura Pate, SOAR, Inc., PO Box 388, Balsam, NC 28707, (828)456-3435, [pate-moore@soarnc.org](mailto:pate-moore@soarnc.org).





# Summer Internship in Vermont

## Be Part of the Most Incredible, Life-Changing Summer Experience on the Planet!



### WHAT IS CAMP AKEELA?

Camp Akeela is a fun, traditional New England overnight summer camp in Vermont for boys and girls ages 9 - 18. Many of our campers have been diagnosed with Asperger's Syndrome or a non-verbal learning disability. Others are undiagnosed but are described as "quirky." All are very bright, charming and well behaved boys and girls who struggle to connect with their peers.

### WHY WORK AT AKEELA?

Akeela provides staff the opportunity to play an integral role in a community that changes kids' lives. You will gain valuable experience working first-hand with children, helping them develop social skills while forging life long friendships.



*"It's a great opportunity to gain experience working with kids with unique behavioral challenges."*

*"I experienced the challenge and reward of making a difference."*

*"Working at Akeela was definitely one of the most meaningful and fulfilling jobs I've had and I loved every minute I was there."*

*"I felt the strongest initial connection with the people and place, even before meeting in person. I also received the most positive and enthusiastic feedback from returning staff."*

### CAMP DETAILS

2014 Staff Dates:

June 18th – August 17th

Staff live in newly renovated cabins with 7-8 campers and 2-3 co-counselors

Opportunities to enjoy days off in Boston, Montreal, Burlington, Vermont, hiking in the Green or White Mountains.

Staff Stipend:

\$1,900 + travel allowance  
+ housing/meals

### POSITIONS AVAILABLE

Cabin Counselor:

Male & Female

Activity Specialist:

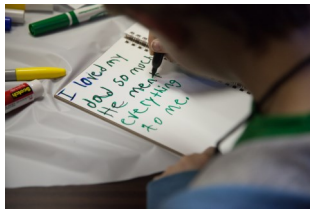
Archery, Arts & Crafts, Boating,  
Ceramics, Cooking, Farm & Garden,  
Fencing, Hiking & Camping, Nature,  
Rocketry, Ropes Course, Sports,  
Sailing, Swimming, Tennis

**READY TO APPLY?** Please visit [www.campakeela.com](http://www.campakeela.com) or contact [staff@campakeela.com](mailto:staff@campakeela.com)

Winter: 314 Bryn Mawr Avenue, Bala Cynwyd, PA 19004 • Summer: One Thoreau Way, Thetford Center, VT 05075  
[www.campakeela.com](http://www.campakeela.com) • [staff@campakeela.com](mailto:staff@campakeela.com) • toll free: 866-680-4744



## ***1 in 7 children lose a parent before the age of 20...***



Comfort Zone Camp is the nation's largest bereavement camp for children ages 7-17 who have experienced the death of a parent, sibling or primary caregiver. Each camper is matched with a Big Buddy mentor for the weekend.



Why is this grief camp so important? This camp gives kids permission to grieve in a healing and supportive environment. Children will be encouraged to share their stories openly and without reservation; to celebrate the lives of their loved ones and to feel the love and support of others who have experienced loss. It is a weekend of shared experiences, shared love and renewed hope for the children, parents, buddy mentors and volunteers.



In North Carolina  
Because NC cares for grieving children

### **Volunteer for Comfort Zone Camp In North Carolina**

A free program for grieving children and young adults

Comfort Zone Camp NC is a free weekend camp program for kids, teens and young adults who have experienced the loss of a parent, sibling or primary caregiver, regardless of when the death occurred.

Each child is paired one-to-one with an adult Big Buddy volunteer. The Big Buddy role includes:

- Ability to donate a weekend of your time to be a Big Buddy; or part-time if a floater
- Play, talk, listen
- Participation in all aspects – including the silly

Other roles include Floaters, Nurses or Grief Therapists

All volunteers must complete our 6 hour training and pass background check before volunteering

### **Upcoming 2013 North Carolina Trainings:**

Saturday, November 2, 2013

9:00 am – 3:00 pm

New York Life

3200 Beechleaf Ct. #820

Raleigh, NC 27604

(Lunch will be provided by Chik-Fil-A)

### **2014 Weekend Camp at Camp Kanata in Wake Forest, NC**

**March 28-30, 2014**

Visit our website for more information:  
[www.czcnc.org](http://www.czcnc.org) or call 919.609.8222







To: Undergraduate Psychology Students

You are invited to apply to present your empirical psychology research at the eighth annual L. Startling Reid Undergraduate Psychology Research Conference at the University of Virginia.

The conference takes place at U.Va. on April 11, 2014. Space is limited; please register early.

Abstract proposals for oral or poster presentations may be submitted from January 6, 2014 until March 10, 2014. To register and for further information please visit <http://avillage.web.virginia.edu/Psych/Conference>. Information there includes:

- who may present
- proposal selection process
- abstract guidelines
- awards.

Limited travel funds are available.

We look forward to receiving your conference presentation proposal.

Sincerely,  
John

John B. Rudder  
Undergraduate Coordinator, Department of Psychology  
University of Virginia  
PO Box 400400  
Charlottesville VA 22904-4400  
[jbr8d@virginia.edu](mailto:jbr8d@virginia.edu)





## Diversifying Clinical Psychology Recruitment Event 2014

This is an opportunity for outstanding undergraduates from underrepresented groups who are interested in getting a PhD in Clinical Psychology to informally meet with Directors from PhD programs across the nation.

**Loews New Orleans Hotel  
Saturday - January 18th, 2014**

The event will include an opportunity for students to present posters representing their research, a workshop on how to get into graduate school, and a workshop that will focus on how to best use your time during the reception.

Interested students should fill out an application:  
[https://sdsuppsychology.qualtrics.com/SE/?SID=SV\\_9nxeRMgSEprK5gh](https://sdsuppsychology.qualtrics.com/SE/?SID=SV_9nxeRMgSEprK5gh)

Inquiries can be sent to:  
Luz Garcini [lgarcini@mail.sdsu.edu](mailto:lgarcini@mail.sdsu.edu)



Additional information will be sent to those who register.

Unfortunately, CUDCP has no money to fund student transportation, lodging, or other fees. In the past, students' undergraduate institutions or sponsoring organizations such as the McNair Scholars program, COR, MBRS, and MARC have provided funds for students to travel to this conference.

For hotel reservations book your room BEFORE DECEMBER 24, 2013 to get the \$174/night rate.

Book online:

<http://www.loewshotels.com/en/New-Orleans-Hotel/GroupPages/Clinical-Psychology>

Book by phone:

504-595-3300 or 866-211-6411 and ask for a room in the Council of University Directors of Clinical Psychology room block, group code DCP115

## THE UNIVERSITY OF NOTTINGHAM: SEEKING Ph.D. STUDENTS



**The University of  
Nottingham**

UNITED KINGDOM • CHINA • MALAYSIA

The School of Psychology at University of Nottingham is seeking highly-motivated candidates for its PhD programme. We expect to select 12 fully-funded (covering home fees and a stipend of £13,590 per year) students each year. Studentships are expected to start in September 2014. The School of Psychology at Nottingham is a research-led department covering a wide range of research areas.

Application forms should be submitted via the University's admissions system by 24th Jan 2014 (international students) or by 14th Feb 2014 (Home and EU students), but you should contact your potential supervisor very well in advance of this deadline. Interviews will be conducted in the second half of February. For further information about the application process, please see:

<http://www.nottingham.ac.uk/psychology/study-with-us/postgraduate/phd-by-research/phd-by-research.aspx>



# NEUROBIOLOGY

## Why choose UNC-Chapel Hill for your Ph.D. in Neurobiology?

The Neurobiology Curriculum at UNC-Chapel Hill has a pioneering tradition as one of the first neuroscience graduate programs in the country, and has continually evolved to prepare students for the ever changing scientific career landscape.

We provide a world class training environment in molecular, cellular, computational, systems, and behavioral neurosciences, as applied to both basic and clinical questions. Our research ranges from molecules to humans, including stem cells, *Drosophila* genetics, mouse genetic models, human brain imaging, and drug development, to name a few. We emphasize training based on cutting edge research techniques including optogenetics and multiphoton imaging based measurement of ensemble neural activity.

Our students are an energetic and diverse group from all over the world. Their thesis work is published in the highest quality journals including *Nature*, *Science*, *Neuron*, and *Nature Neuroscience*. Our alumni occupy leading positions in universities, medical schools, liberal arts colleges, biotechnology and pharmaceutical companies, regulatory agencies, consulting firms, and scientific publishing.

In addition to rigorous course work and scientific accomplishments, we emphasize collegiality, collaboration, and career development as integral parts of all neurobiology educational and research activities. There are numerous career enhancing community activities including a weekly campus-wide neuroscience seminar, weekly research talks given by students, an annual symposium, and an annual student research day. Please visit our website and consider applying!



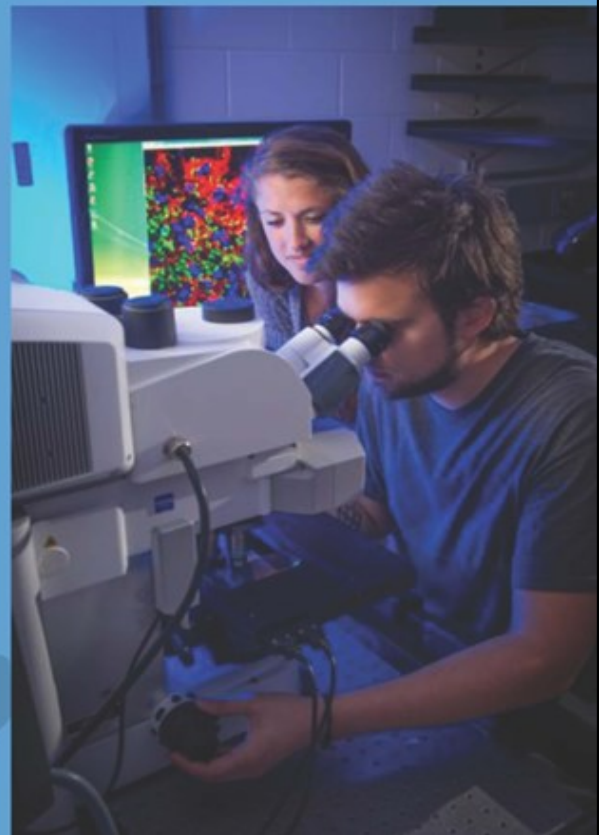
THE UNIVERSITY  
of NORTH CAROLINA  
at CHAPEL HILL

[www.med.unc.edu/neurobiology](http://www.med.unc.edu/neurobiology)  
[bbbsp.unc.edu](http://bbbsp.unc.edu)

Search keywords: **unc neurobiology**

Phone: **919-966-1260**

Email: [neurobiology@med.unc.edu](mailto:neurobiology@med.unc.edu)



## How to Apply

If you are interested in the Neurobiology Curriculum at UNC-CH, please apply through the Biological & Biomedical Sciences Program (BBSP), the umbrella admissions program for graduate studies in biomedical sciences at UNC-Chapel Hill.

The Neurobiology Curriculum is enthusiastically committed to graduate training of under-represented minority students, individuals with disabilities, and individuals from disadvantaged backgrounds. We encourage interested students to contact the Neurobiology Curriculum directly with any questions they may have regarding the program or the application process.

[bbbsp.unc.edu](http://bbbsp.unc.edu) | [www.med.unc.edu/neurobiology](http://www.med.unc.edu/neurobiology) | [neurobiology@med.unc.edu](mailto:neurobiology@med.unc.edu)







▶ EMOTION REGULATION & AFFECTIVE  
NEUROSCIENCE



▶ HEALTH RISK PERCEPTIONS &  
DECISION MAKING

▶ MENTAL AND PHYSICAL HEALTH  
DISPARITIES

▶ STRESS & COPING PROCESS

▶ GENDER & HEALTH

▶ HIV PREVENTION & LGBT HEALTH

▶ EXPERIMENTAL PSYCHOPATHOLOGY

▶ CANCER SURVIVORSHIP & CHRONIC  
ILLNESS

▶ ADDICTION & SMOKING CESSATION

▶ MOOD & ANXIETY DISORDERS



# Health Psychology & Clinical Science

PH.D. PROGRAM AT THE CITY UNIVERSITY OF NEW YORK

*The program adopts a focus on the interaction of physical and mental health, health disparities and the sociocultural context, and the advancement of health equity from a biopsychosocial perspective.*

The Ph.D. program in Health Psychology and Clinical Science trains outstanding research scientists in the biopsychosocial determinants of physical and mental health of individuals, families, and communities. Doctoral students receive a thorough grounding in both health psychology and clinical science, including current theoretical perspectives, the conduct and evaluation of scientific research, and the implementation of prevention and intervention trials across diverse populations.

## Program Faculty:

- ◆ Cheryl Carmichael
- ◆ Anil Chacko
- ◆ Tracy Dennis
- ◆ Joel Erblich
- ◆ Sarit Golub
- ◆ Renee Goodwin
- ◆ Michael Hoyt
- ◆ Doug Mennin
- ◆ Regina Miranda
- ◆ Jeffrey Parsons
- ◆ Laura Reigada
- ◆ Tracey Revenson
- ◆ Margaret Rosario
- ◆ Mariann Weierich



## For more information:

<http://cunyclinicalandhealthgrad.net/>

- ◆ Tracey Revenson (TRevenson@gc.cuny.edu), health psychology emphasis
- ◆ Doug Mennin (dmennin@hunter.cuny.edu), clinical science emphasis



# THE UNIVERSITY OF PITTSBURGH SCHOOL OF EDUCATION

## Ph.D. Program in Learning Sciences and Policy

### Why Learning Sciences & Policy?

Our program is based on the belief that understanding learning, teaching, and organizations is best undertaken as an interactive system, and that an integrated and coordinated interdisciplinary approach is best suited to understand, design and implement educational change. The program combines disciplines in learning sciences, teaching in the content disciplines, and organization and policy studies with the goal of improving instruction at scale, and is predicated on the idea that successful policy solutions will require learning on the part of educational professionals at all levels of the system.

### UNIQUE FEATURES OF THE PROGRAM

- Active involvement in ongoing research projects
- Integrated coursework that covers the fields of Learning Sciences, Learning Policy and organization, and Content Area Learning
- Policy and design internships with projects including the Institute for Learning, the Learning Policy Center, University of Pittsburgh's Center of Out-of-School Learning Environments (UPCLOSE), Pittsburgh Science of Learning center (PSLC), and SWORD (the Design-based Learning Project)
- Access to city-wide resources in education and public policy including RAND-Pittsburgh and Carnegie Mellon University
- Funding (for 3 years) to admitted students through research assistantships

### Active Faculty Research Projects Include:

Improving instruction through project-based curriculum • Implementation of No Child Left Behind • Effect of instructional coaching on Professional learning in Implementation of reform Examining the effects of student learning • The effects of learning from text • School Instructional design for supporting Technology-scaffolded peer evaluation in instructional improvement • Knowledge • Effects of CSR programs on teaching managing science instruction • Reasoning and Validity and technical issues in large-scale assessment programs • Role of induction and professional development in quality of instruction • Special education in the context of NCLB



### FACULTY

Heather Bachman  
William Bickel  
Richard Correnti  
Kevin Crowley  
Michael Ford  
Jim Greeno  
Laura Hamilton  
Linda Kucan  
Suzanne Lane  
Alan Lesgold  
Lindsay Clare Matsumura  
Timothy Nokes  
Lauren Resnick  
Jennifer Russell  
Christian Schunn  
Margaret Smith  
Mary Kay Stein (Chair)

## Application deadline: January 1

For information about how to apply please contact  
Program Chair, **Mary Kay Stein** at [mkstein@pitt.edu](mailto:mkstein@pitt.edu) or (412) 624-6971

For more information on the program  
visit us at [www.education.pitt.edu/LSAP](http://www.education.pitt.edu/LSAP)





## PHD STUDENTSHIPS IN DEVELOPMENTAL COGNITIVE NEUROSCIENCE AND DEVELOPMENTAL PSYCHOLOGY



The Brain & Psychological Sciences Research Centre (BpsyC) at Swinburne University of Technology (located in Melbourne, Australia) is currently seeking motivated people to take up scholarships to undertake postgraduate (PhD) research in the fields of Cognitive Neuroscience (with a developmental emphasis) and Developmental Psychology. The BPsyC is a newly formed centre with state-of-the-art infant and child testing facilities including child-friendly high-density EEG and infrared -eye tracking systems. The centre also includes on-site fMRI, MEG, and TMS capability. Students would be invited to develop their own proposals for research and extend existing projects including (but not limited to) those in the following areas:

- *Young children's use of technology (e.g., video communication, touch screen devices)*
- *Neural mechanisms involved in infant memory, face processing and object processing*
  - *The development of neural patterns underlying perception of space and time*
  - *Behavioral and neural markers of autism spectrum disorder in infancy*

Australian and overseas candidates with a 4-year bachelor's degree (achieved or expected) in any relevant area are encouraged to apply. Competitive scholarship schemes (including tuition and stipend) are available for both international and Australian students.

Completed applications and all materials must be received by 30 October, 2013. Applicants from outside Australia are strongly encouraged to express interest early.

For more information on the program and how to apply, please contact: Dr. Jordy Kaufman at: [jkaufman@swin.edu.au](mailto:jkaufman@swin.edu.au) +61 3 9214 5757.



## UNC PSYCHOLOGY CLUB

Psychology Club holds events that provide information on undergraduate research in psychology, graduate school insight and how to apply to grad school, and different fields of and careers in psychology. We have guest speakers at every event who are working in the field or are experts on the topic of the meeting (i.e. current grad students), and for most meetings they will talk and then there will be time for questions at the end.



Please see our Facebook page for more information!

### UPCOMING EVENTS:

**School Psychology**

January 23, 2014

**Volunteer Opportunities in Psychology**

February 13, 2014

**Clinical Psychology**

March 20, 2014

**Non-Traditional Psychology Fields**

April 10, 2014



Please help us highlight your interesting research projects and activities in the newsletter! Send all photos and submissions to

Dana Ripperton:  
[dripper@email.unc.edu](mailto:dripper@email.unc.edu).

### **Looking to gain valuable experience through volunteer work?**

Several agencies across NC *specifically* contact our department seeking psychology majors. This is an excellent way to gain experience for your next job or to help you make decisions about your career path.

**Check out the department website [here](#) for volunteer**